

PLAN OF SUBDIVISION OF PART OF
REMAINDER PARCEL B(04455)
DISTRICT LOT 4039
CARIBOO DISTRICT

B.C.G.S. 93G.097



SCALE = 1 : 1000
ALL DISTANCES ARE SHOWN IN METRES.

THIS PLAN SHOWS GROUND-LEVEL MEASURED DISTANCES.
PRIOR TO COMPUTATION OF U.T.M. COORDINATES, MULTIPLY
BY COMBINED FACTOR 0.99949463.

GRID BEARINGS ARE DERIVED FROM OBSERVATIONS
BETWEEN CONTROL MONUMENTS 86H1581 AND 86H1854,
INTEGRATED SURVEY AREA NUMBER 39, PRINCE GEORGE.

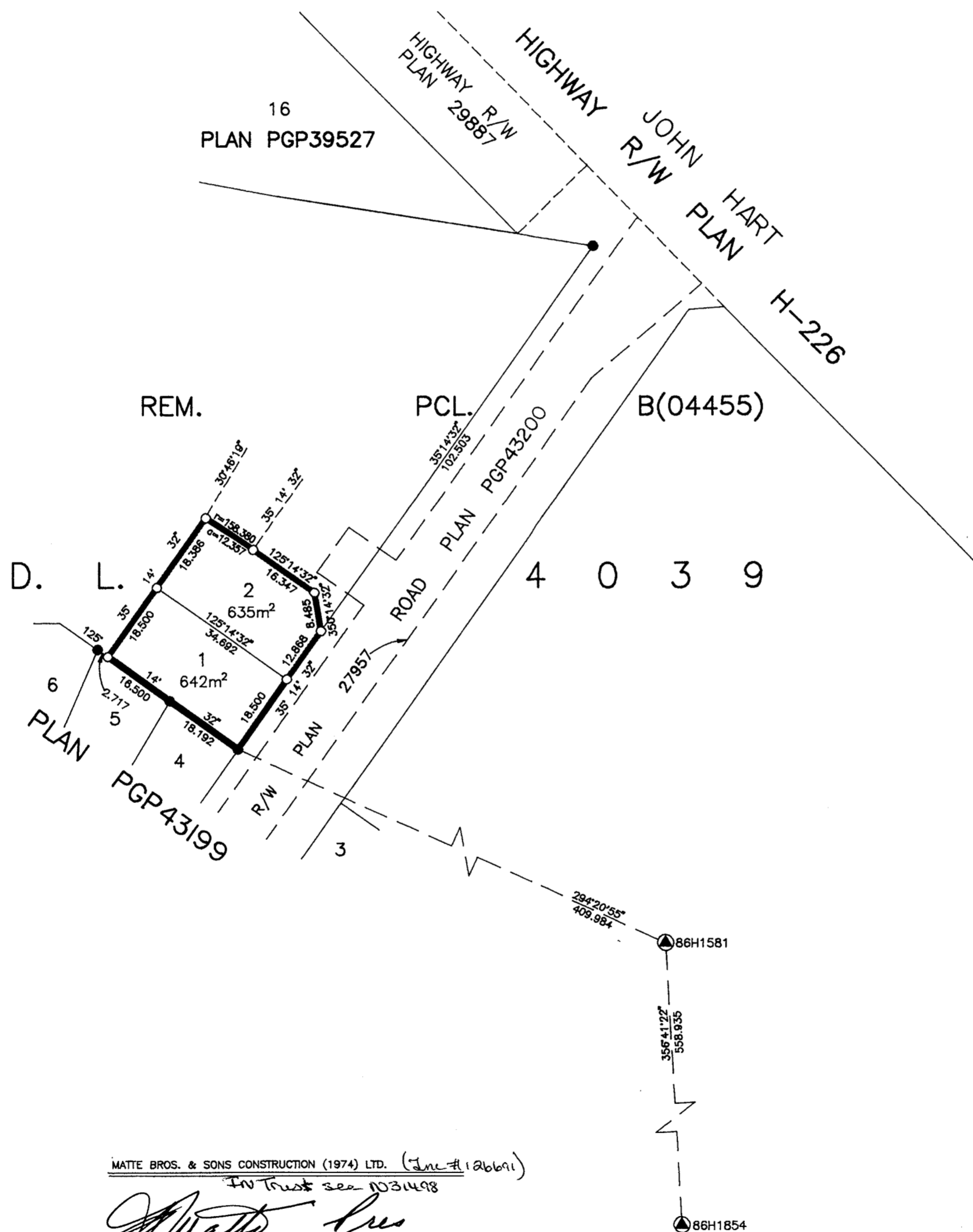
LEGEND

- STANDARD IRON POST FOUND
- STANDARD IRON POST PLACED
- ⊙ CONTROL MONUMENT

PLAN No. PGP 43805

DEPOSITED IN THE LAND TITLE OFFICE
AT PRINCE GEORGE, B.C., THIS 25
DAY OF mar, 19 99

REGISTRAR LK



APPROVED UNDER THE LAND TITLE ACT
THIS 16th DAY OF March, 19 99

M. G. Bain
APPROVING OFFICER, MINISTRY OF TRANSPORTATION
AND HIGHWAYS.

APPROVED UNDER THE LAND TITLE ACT
THIS 1st DAY OF March, 19 99

E. Muller
APPROVING OFFICER, CITY OF PRINCE GEORGE.

MATTE BROS. & SONS CONSTRUCTION (1974) LTD. (Inc # 12661)
In Trust see D31498

Louis Joseph Matte
AUTHORIZED SIGNATORY
LOUIS JOSEPH MATTE
PRINT NAME

Marie Matte
AUTHORIZED SIGNATORY
MARIE MATTE
PRINT NAME

Natalie Trodd
WITNESS (AS TO BOTH SIGNATURES)

PRINT NAME NATALIE TRODD

ADDRESS 1261 Camden Dr

Prince George, B.C.

OCCUPATION Sec.

I, RONALD L. JOHNS, A BRITISH COLUMBIA LAND
SURVEYOR, OF PRINCE GEORGE, IN BRITISH COLUMBIA,
CERTIFY THAT I WAS PRESENT AT AND PERSONALLY
SUPERINTENDED THE SURVEY REPRESENTED BY THIS
PLAN AND THAT THE SURVEY AND PLAN ARE CORRECT.
THE SURVEY WAS COMPLETED ON THE 16TH DAY OF
DECEMBER, 1997.

R. L. Johns
R.L. JOHNS, B.C.L.S., C.L.S.

THIS PLAN LIES WITHIN THE FRASER-
FORT GEORGE REGIONAL DISTRICT.

R. L. JOHNS LAND SURVEYING LTD.
LEGAL AND ENGINEERING SURVEYS
240 VICTORIA STREET
PRINCE GEORGE, B. C. V2L 2J4
PHONE: (250)562-5759
FAX: (250)562-5703