

REFERENCE PLAN OF ROAD EXCHANGE TO
 TO ACCOMPANY CITY OF PRINCE GEORGE BYLAW NO. 7030
 CLOSING LANE SHOWN ON PLAN 8816 AND PLAN 1268
 (ADJACENT TO LOTS A, B, C AND D, PLAN 8816,
 LOTS 12 AND 13, BLOCK 22 AND LOT 4,
 BLOCK 23, PLAN 1268) AND OPENING AS ROAD
 PART OF LOT B, PLAN 8816 AND PART OF
 LOT 12, BLOCK 22, PLAN 1268,
 DISTRICT LOT 343, CARIBOO DISTRICT.

Pursuant to Section 578 of the Municipal Act.
 B.C.G.S. 93G.097

Scale: 1 : 500 (Distances are in metres)

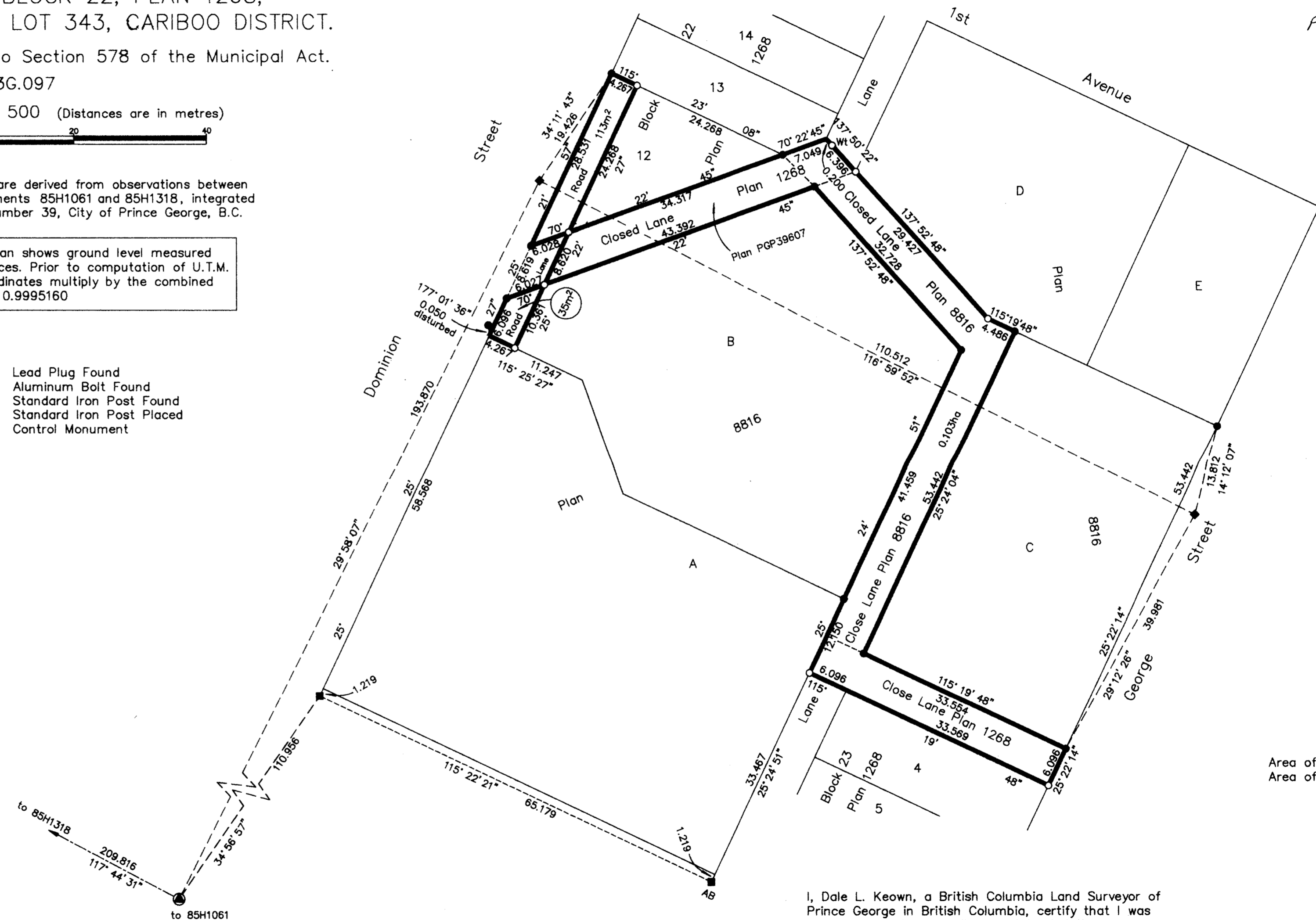


Grid bearings are derived from observations between
 control monuments 85H1061 and 85H1318, integrated
 survey area number 39, City of Prince George, B.C.
 NAD83(CSRS)

Note: This plan shows ground level measured
 distances. Prior to computation of U.T.M.
 co-ordinates multiply by the combined
 factor 0.9995160

LEGEND

- AB Lead Plug Found
- Aluminum Bolt Found
- Standard Iron Post Found
- ⊙ Standard Iron Post Placed
- ⊙ Control Monument



PLAN NO. PGP 43795

Deposited in the Land Title Office at Prince
 George this 19 day of March 1999

REGISTRAR

PID #024-474-517
 PN 9222

Area of Closed Lane 0.103ha
 Area of Opened Road 148m²

I, Dale L. Keown, a British Columbia Land Surveyor of
 Prince George in British Columbia, certify that I was
 present at and personally superintended the survey
 represented by this plan and that the survey and plan
 are correct. The survey was completed on the 15th day
 of September, 1999.

Dale L. Keown
 Dale L. Keown, B.C.L.S.

This plan lies within the Fraser-Fort
 George Regional District.

KILBRIDE LAND SURVEYING LTD.
 British Columbia Land Surveyors
 Prince George, B.C.
 Ph: (250) 562-1196 Fax: 562-3656

F.B.- W24	D.L.- 343(22)	FILE No. - 980400BL
-----------	---------------	---------------------