

PLAN OF SUBDIVISION OF PART OF  
 LOT 1, PLAN PGP36549  
 DISTRICT LOTS 1605 & 2003  
 CARIBOO DISTRICT

PLAN No. PGP 43062

DEPOSITED IN THE LAND TITLE OFFICE  
 AT PRINCE GEORGE, B.C., THIS 14  
 DAY OF Oct, 1998

B.C.G.S. 93G.087

REGISTRAR

THIS PLAN SHOWS GROUND-LEVEL MEASURED DISTANCES.  
 PRIOR TO COMPUTATION OF U.T.M. COORDINATES, MULTIPLY  
 BY COMBINED FACTOR 0.9995105393.

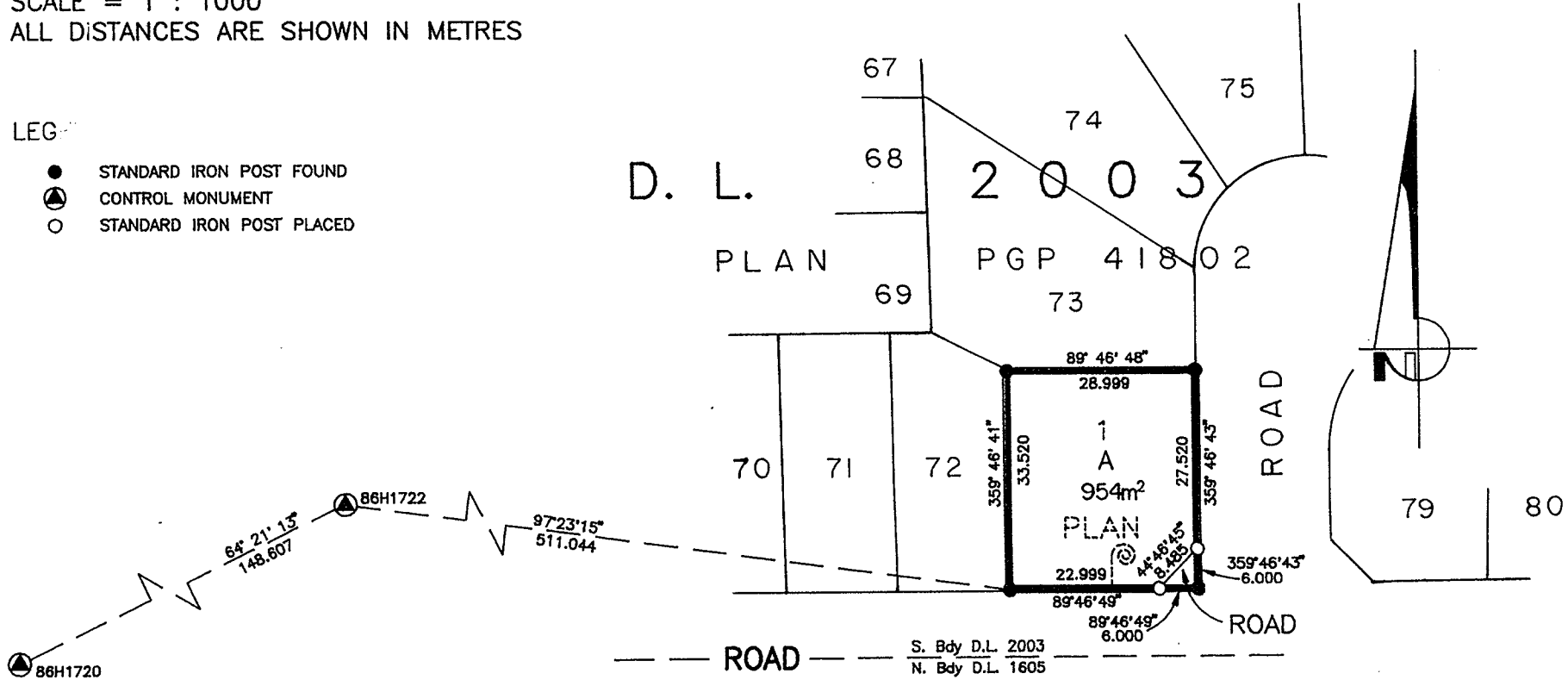
GRID BEARINGS ARE DERIVED FROM OBSERVATIONS  
 BETWEEN CONTROL MONUMENTS 86H1720, AND 86H1722,  
 INTEGRATED SURVEY AREA NUMBER 39.



SCALE = 1 : 1000  
 ALL DISTANCES ARE SHOWN IN METRES

LEGEND

- STANDARD IRON POST FOUND
- ⊙ CONTROL MONUMENT
- STANDARD IRON POST PLACED



THE ROMAN CATHOLIC EPISCOPAL CORPORATION OF PRINCE RUPERT

+ *Gerald Wiesner, DM*  
 AUTHORIZED SIGNATORY  
 GERALD WIESNER, DM  
 PRINT NAME

AUTHORIZED SIGNATORY

PRINT NAME

WITNESS (AS TO BOTH SIGNATURES)

*John Phillips*  
 PRINT NAME

ADDRESS

ACCOUNTANT  
 OCCUPATION

D. L. 2003  
 PLAN PGP 41802  
 ROAD  
 ROAD  
 S. Bdy D.L. 2003  
 N. Bdy D.L. 1605  
 PGP36549  
 1  
 R/W PLAN 23908  
 D. L. 1605

APPROVED UNDER THE LAND TITLE ACT  
 THIS 15th DAY OF September 1998

*Ed Chant*  
 APPROVING OFFICER, CITY OF PRINCE GEORGE.

I, RONALD L. JOHNS, A BRITISH COLUMBIA LAND SURVEYOR, OF PRINCE GEORGE, IN BRITISH COLUMBIA, CERTIFY THAT I WAS PRESENT AT AND PERSONALLY SUPERINTENDED THE SURVEY REPRESENTED BY THIS PLAN AND THAT THE SURVEY AND PLAN ARE CORRECT. THE SURVEY WAS COMPLETED ON THE 22ND DAY OF AUGUST, 1997.

*R. L. Johns*  
 R.L. JOHNS, B.C.L.S., C.L.S.

THIS PLAN LIES WITHIN THE FRASER-FORT GEORGE REGIONAL DISTRICT.

R. L. JOHNS LAND SURVEYING LTD.  
 LEGAL AND ENGINEERING SURVEYS  
 240 VICTORIA STREET  
 PRINCE GEORGE, B. C. V2L 2J4  
 PHONE: (250)562-5759  
 FAX: (250)562-5703