

REFERENCE PLAN OF CONSOLIDATION OF PART OF
 REMAINDER WEST 1/2 LOT 1, EAST 1/2 LOT 1,
 WEST 1/2 AND EAST 1/2 OF LOTS 2 AND 3,
 BLOCK 9, PLAN 837 AND PARCEL B,
 PLAN PGP41409, ALL IN DISTRICT LOT 2508,
 CARIBOO DISTRICT

PLAN NO. PGP43028

Deposited in the Land Title Office at Prince
 George this 6 day of Oct 1998.

LL
 REGISTRAR

Pursuant to Section 100(1)(b) of the
 Land Title Act.

B.C.G.S. 93G.096

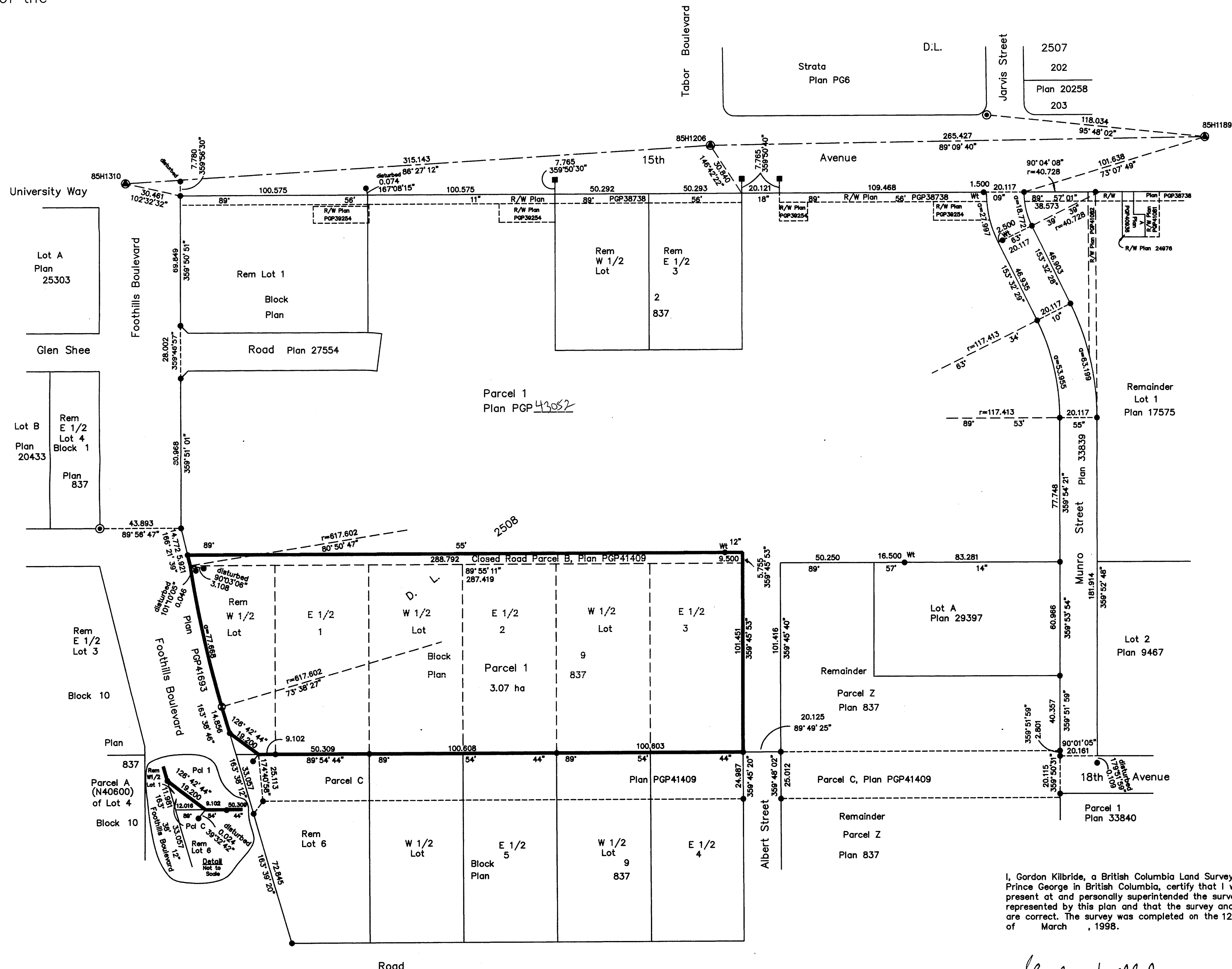
Scale: 1 : 1250 (Distances are in metres)



Grid bearings are derived from observations between
 control monuments 85H1206 and 85H1310, integrated
 survey area number 39, City of Prince George, B.C.

Note: This plan shows ground level measured
 distances. Prior to computation of U.T.M.
 co-ordinates multiply by the combined
 factor 0.99950717

- LEGEND**
- ⊙ Standard Concrete Post Found
 - Lead Plug Found
 - ⊙ Standard Capped Post Found
 - ⊙ Standard Iron Post Found
 - ⊙ Standard Iron Post Placed
 - ⊙ Control Monument Found



I, Gordon Kilbride, a British Columbia Land Surveyor of
 Prince George in British Columbia, certify that I was
 present at and personally superintended the survey
 represented by this plan and that the survey and plan
 are correct. The survey was completed on the 12th day
 of March, 1998.

I hereby certify that this is the
 Official Plan of the lands shown
 outlined hereon.
 Original signed by
 CHUCK SALMON
 Surveyor General
 Victoria, B.C. September 10, 1998.

Gordon Kilbride
 Gordon Kilbride, B.C.L.S.
 LTO Client No. 010909

This plan lies within the Fraser-Fort
 George Regional District.

KILBRIDE LAND SURVEYING LTD.
 British Columbia Land Surveyors
 Prince George, B.C.
 Ph: (250) 562-1196 Fax: 562-3656

F.B.- WG05 D.L.- 2508 FILE No. 970629-2