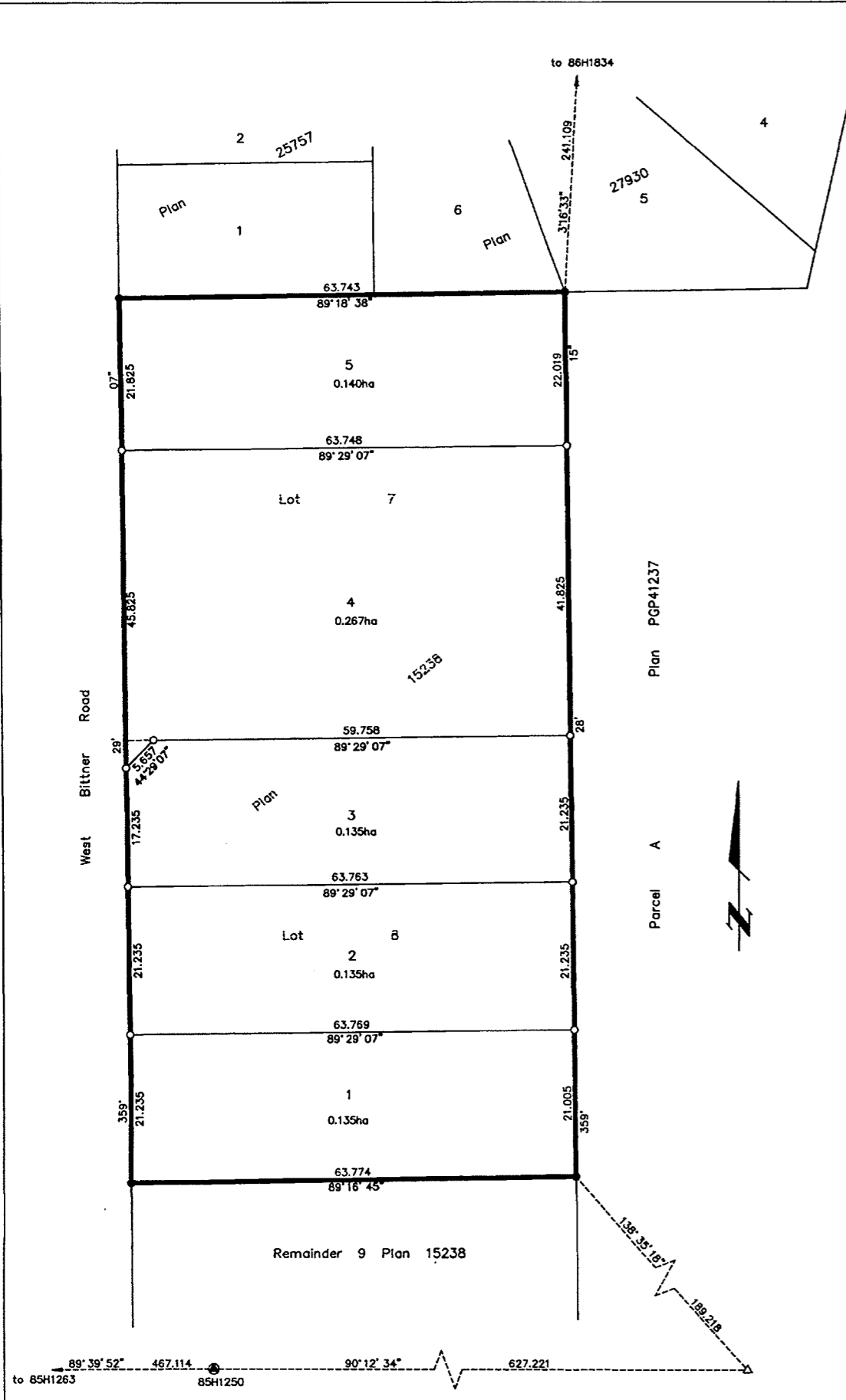


PLAN NO. PGP 42925

Deposited in the Land Title Office at Prince George this 15th day of Sept. 1998

Linda J. Kilbride/dg
REGISTRAR Pm 37907



PLAN OF SUBDIVISION OF LOTS 7 AND 8,
PLAN 15238, DISTRICT LOT 633,
CARIBOO DISTRICT.

B.C.L.S. 93G.097

Scale: 1 : 500 (Distances are in metres)



Grid bearings are derived from observations between control monuments 85H1250 and 85H1263, integrated survey area number 39, City of Prince George, B.C.

Note: This plan shows ground level measured distances. Prior to computation of U.T.M. co-ordinates multiply by the combined factor 0.99950108

- LEGEND**
- Standard Iron Post Found
 - Standard Iron Post Placed
 - ⊙ Control Monument
 - △ Traverse Hub Placed

Owner: Denny's Woodwork & Construction Ltd. (Inc. #385770)

Judy Kwiatkowski
Authorized Signatory

JUDY KWIATKOWSKI
Print Name

Dennis Kwiatkowski
Authorized Signatory

DENNIS KWIATKOWSKI
Print Name

Gordon Kilbride
Witness to both

Gordon Kilbride
Print Name

324 Vancouver St
Address

Prince George V2L 2N9
Postal Code

B C Land Surveyor
Occupation

I, Dale L. Keown, a British Columbia Land Surveyor of Prince George in British Columbia, certify that I was present at and personally superintended the survey represented by this plan and that the survey and plan are correct. The survey was completed on the 30th day of September, 1997.

Dale Keown
Dale L. Keown, B.C.L.S.

The registered owners designated hereon has entered into a covenant with the City of Prince George under section 219 of the Land Title Act.

Approved under the Land Title Act this 14th day of May, 1998

Ed Chantre
Approving Officer
City of Prince George

Reapproved Aug. 18, 1998 Ed Chantre

This plan lies within the Fraser-Fort George Regional District.

KILBRIDE LAND SURVEYING LTD. British Columbia Land Surveyors Prince George, B.C. Ph: (250) 562-1196 Fax: 562-3656		
F.B.- RA	D.L.- 633	FILE No.- 970748