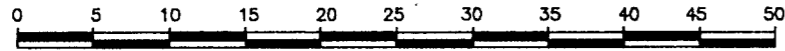


PLAN OF SUBDIVISION OF
LOT 15, PLAN 11647, DISTRICT LOT 633,
CARIBOO DISTRICT.

PLAN No. PGP 42864

DEPOSITED IN THE LAND TITLE OFFICE
AT PRINCE GEORGE, B.C., THIS 11
DAY OF Aug, 1998

SCALE 1 : 500 B.C.G.S. 93G.097



ALL DISTANCES ARE SHOWN IN METERS.

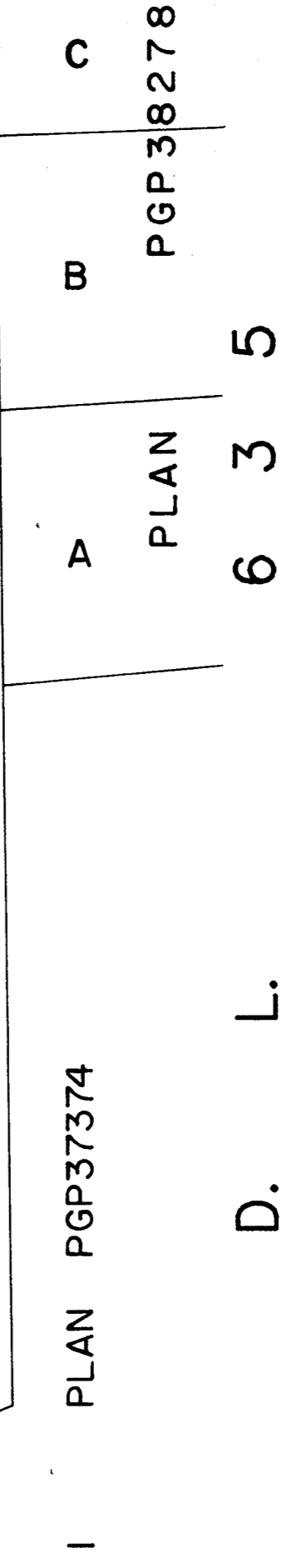
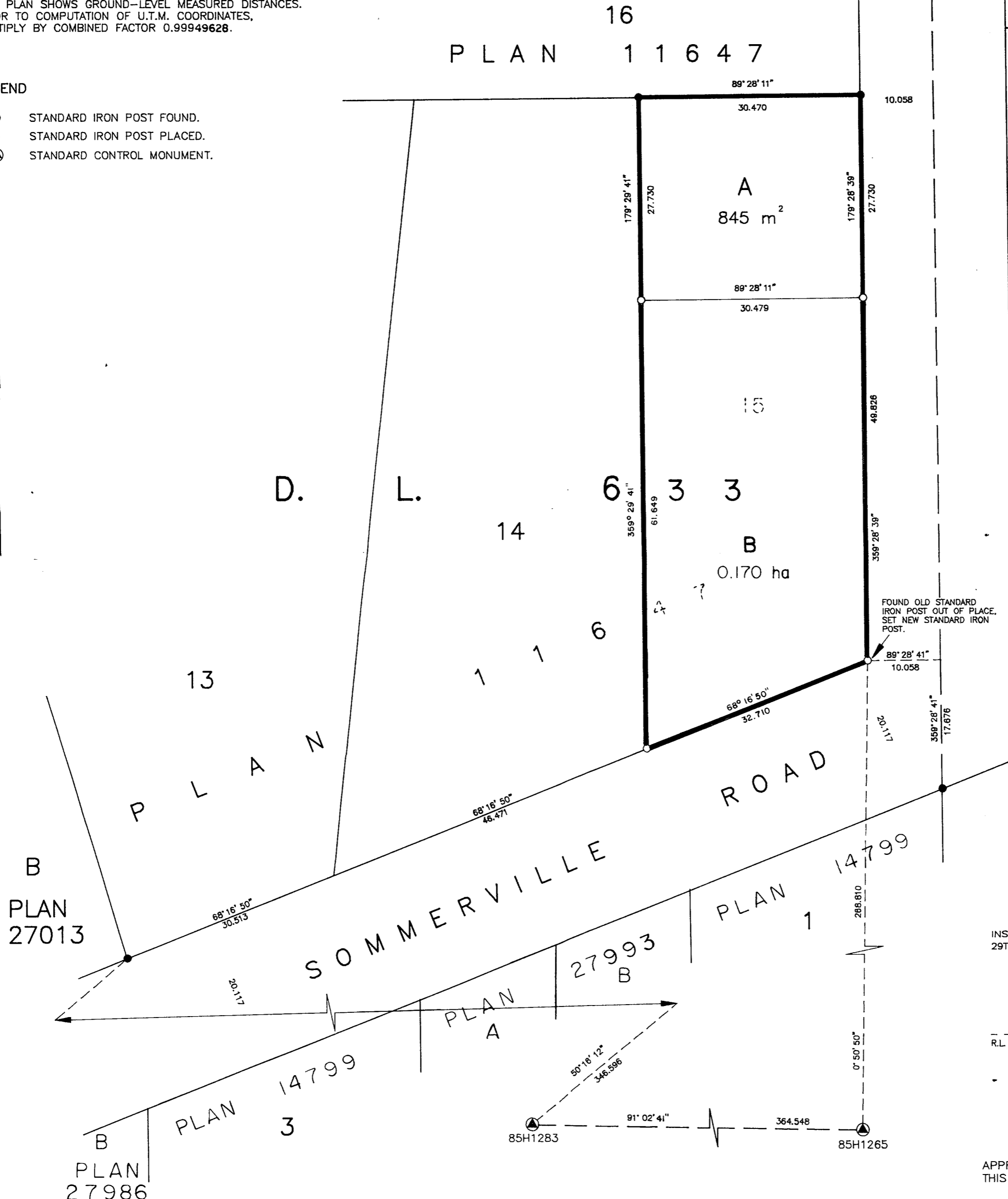
GRID BEARINGS ARE DERIVED FROM OBSERVATIONS
BETWEEN CONTROL MONUMENTS 85H1283 AND 85H1265,
INTEGRATED SURVEY AREA NUMBER 39.

THIS PLAN SHOWS GROUND-LEVEL MEASURED DISTANCES.
PRIOR TO COMPUTATION OF U.T.M. COORDINATES,
MULTIPLY BY COMBINED FACTOR 0.99949628.

REGISTRAR *AJK*

LEGEND

- STANDARD IRON POST FOUND.
- STANDARD IRON POST PLACED.
- ▲ STANDARD CONTROL MONUMENT.



INSPECTED UNDER THE LAND TITLE ACT ON THE
29TH DAY OF APRIL, 1998.

R.L. Johns
R.L. JOHNS, B.C.L.S., C.L.S.

APPROVED UNDER THE LAND TITLE ACT
THIS 11th DAY OF August, 1998

Ed Hunter
APPROVING OFFICER, CITY OF PRINCE GEORGE.

I, RONALD L. JOHNS, A BRITISH COLUMBIA LAND
SURVEYOR, OF PRINCE GEORGE, IN BRITISH COLUMBIA,
CERTIFY THAT I WAS PRESENT AT AND PERSONALLY
SUPERINTENDED THE SURVEY REPRESENTED BY THIS
PLAN AND THAT THE SURVEY AND PLAN ARE CORRECT.
THE SURVEY WAS COMPLETED ON THE 14TH DAY OF
AUGUST, 1992.

R.L. Johns
R.L. JOHNS, B.C.L.S.

OWNER: *Ralph Suvvee*
RALPH SUVEE

OWNER: *Anne Suvvee*
ANNE SUVEE

WITNESS (AS TO BOTH SIGNATURES)
Vicky Warwick

WITNESS (AS TO BOTH SIGNATURES)
Vicky Warwick

PRINT NAME
Vicky Warwick

ADDRESS
10970 Grassland
Prince George, B.C.

OCCUPATION
Hair stylist

THIS PLAN LIES WITHIN THE FRASER-FORT
GEORGE REGIONAL DISTRICT.

R.L. JOHNS & ASSOCIATES
LEGAL AND ENGINEERING SURVEYS
240 VICTORIA STREET
PRINCE GEORGE, B.C. V2L 2J4
PHONE: (604) 562-5759
FAX: (604) 562-5703