

PLAN OF SUBDIVISION OF  
 LOT 6, PLAN 17582,  
 DISTRICT LOT 2611,  
 CARIBOO DISTRICT.  
 B.C.G.S. 93G.097

PLAN NO. PGP 42567

Deposited in the Land Title Office at Prince  
 George this 28 day of May 1998.

Scale: 1 : 1000 (Distances are in metres)

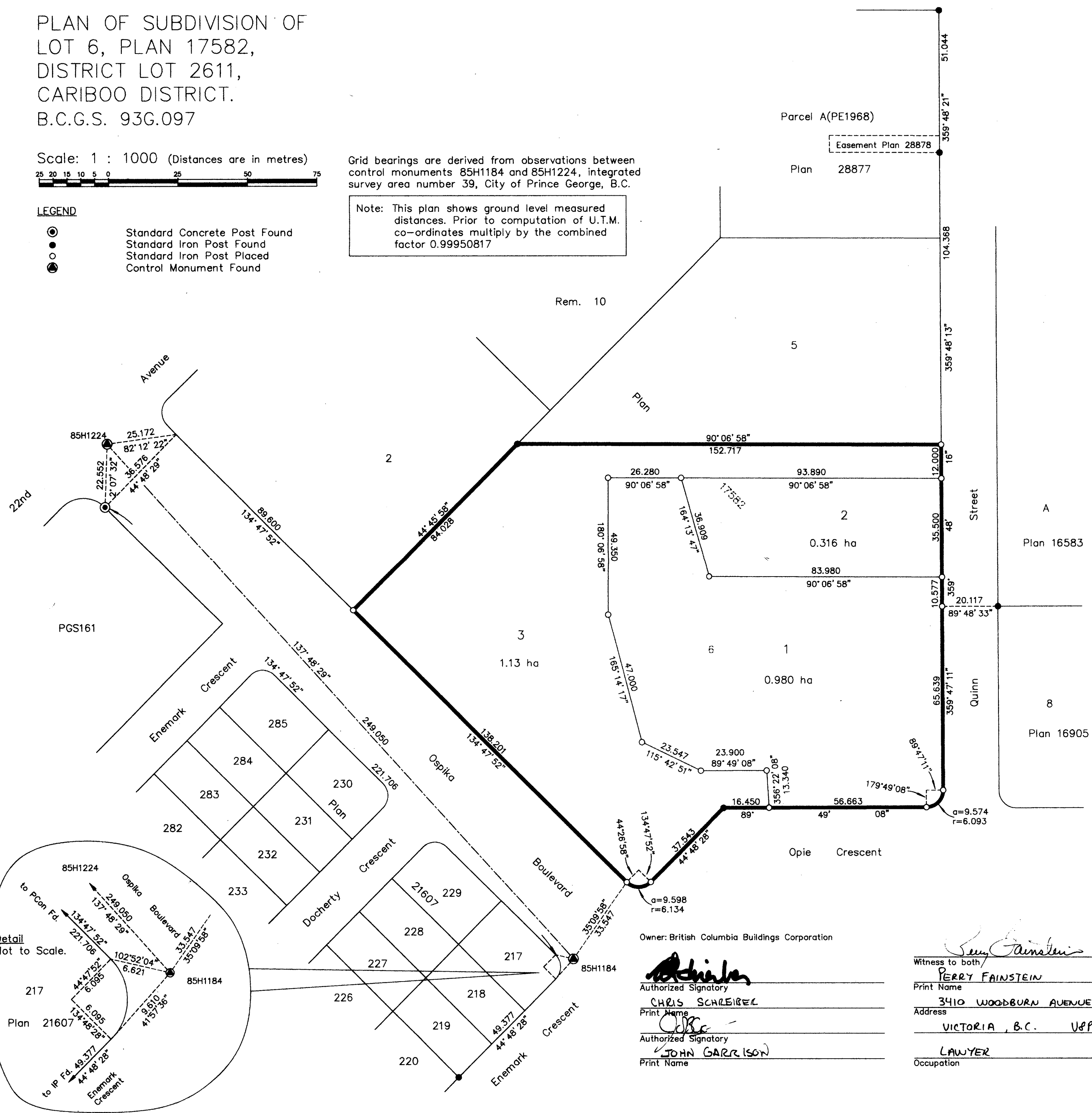
Grid bearings are derived from observations between  
 control monuments 85H1184 and 85H1224, integrated  
 survey area number 39, City of Prince George, B.C.

LEGEND

- Standard Concrete Post Found
- Standard Iron Post Found
- Standard Iron Post Placed
- Control Monument Found

Note: This plan shows ground level measured  
 distances. Prior to computation of U.T.M.  
 co-ordinates multiply by the combined  
 factor 0.99950817

REGISTRAR



I, Gordon Kilbride, a British Columbia Land Surveyor of  
 Prince George in British Columbia, certify that I was  
 present at and personally superintended the survey  
 represented by this plan and that the survey and plan  
 are correct. The survey was completed on the 5th day  
 of December, 1997.

*Gordon Kilbride*  
 Gordon Kilbride, B.C.L.S.  
 LTO Client No. 010909

Approved under the Land Title Act this 14 day of  
 May, 1998

*Ed Hunter*  
 Approving Officer  
 City of Prince George

Owner: British Columbia Buildings Corporation

*Chris Schreiber*  
 Authorized Signatory  
 CHRIS SCHREIBER  
 Print Name  
*John Garrison*  
 Authorized Signatory  
 JOHN GARRISON  
 Print Name

*Sam Feinstein*  
 Witness to both/  
 PERRY FAINSTEIN  
 Print Name  
 3410 WOODBURN AVENUE  
 Address  
 VICTORIA, B.C. V8P 5C1  
 Postal Code  
 LAWYER  
 Occupation

This plan lies within the Fraser-Fort  
 George Regional District.

KILBRIDE LAND SURVEYING LTD.  
 British Columbia Land Surveyors  
 Prince George, B.C.  
 Ph: (250) 562-1196 Fax: 562-3656  
 F.B.- RA    D.L.- 2611    FILE No. - 970718S