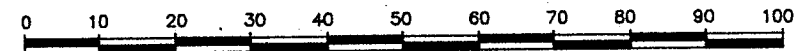


PLAN OF SUBDIVISION OF PART OF
 REM. N.E. 1/4
 DISTRICT LOT 2433
 CARIBOO DISTRICT

B.C.G.S. 93J.007



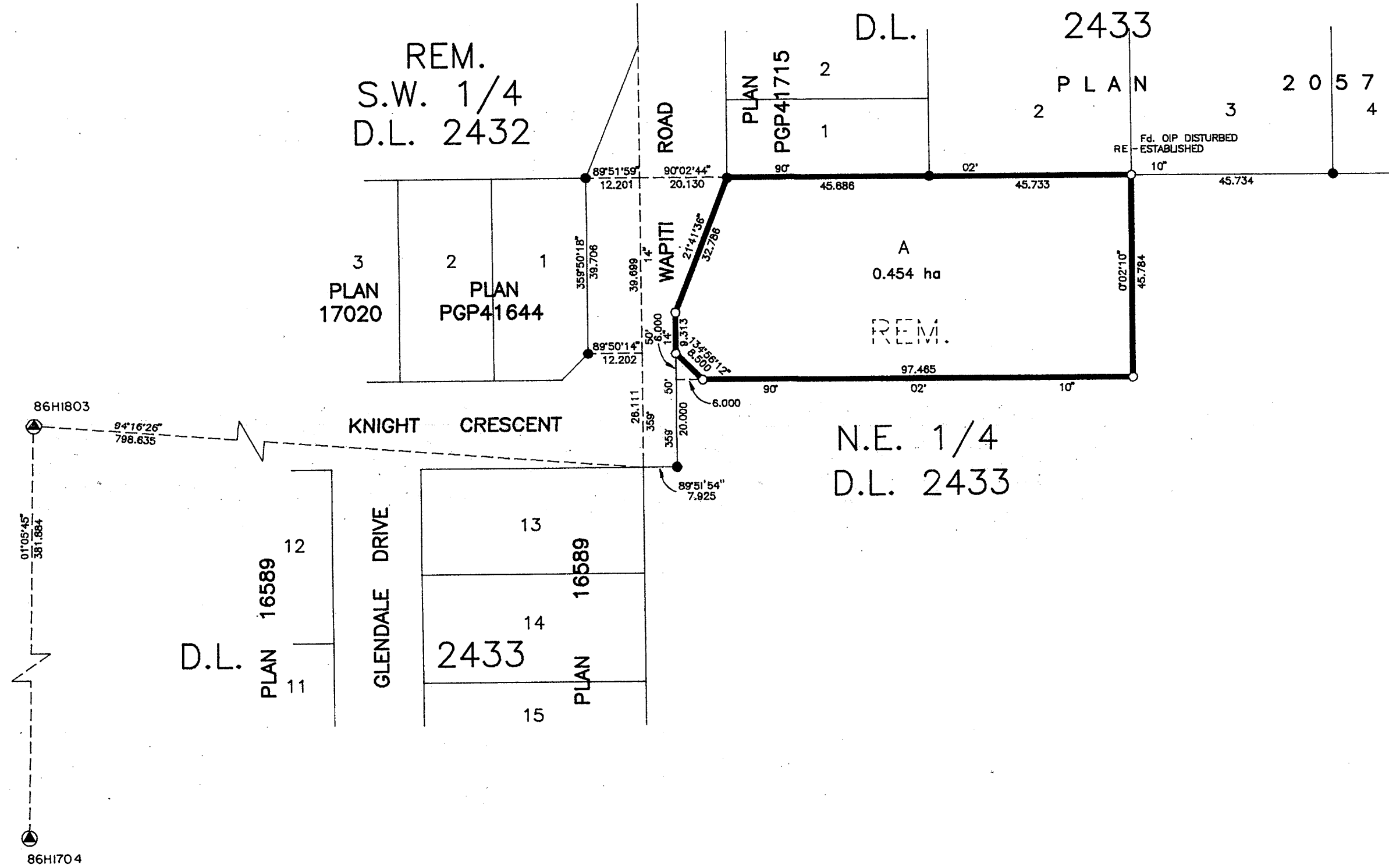
SCALE = 1 : 1000
 ALL DISTANCES ARE SHOWN IN METRES.

THIS PLAN SHOWS GROUND-LEVEL MEASURED DISTANCES.
 PRIOR TO COMPUTATION OF U.T.M. COORDINATES, MULTIPLY
 BY COMBINED FACTOR 0.99948420.

GRID BEARINGS ARE DERIVED FROM OBSERVATIONS
 BETWEEN CONTROL MONUMENTS 86H1704, AND 86H1803,
 INTEGRATED SURVEY AREA NUMBER 39, PRINCE GEORGE.

LEGEND

- STANDARD IRON POST FOUND
- STANDARD IRON POST PLACED
- ▲ CONTROL MONUMENT



PLAN No. PGP 42529

DEPOSITED IN THE LAND TITLE OFFICE
 AT PRINCE GEORGE, B.C., THIS 20
 DAY OF MAY, 1998

REGISTRAR *AK*

APPROVED UNDER THE LAND TITLE ACT
 THIS 20th DAY OF May, 1998

Ed. Chant
 APPROVING OFFICER, CITY OF PRINCE GEORGE.

THIS PLAN LIES WITHIN THE FRASER-
 FORT GEORGE REGIONAL DISTRICT.

I, RONALD L. JOHNS, A BRITISH COLUMBIA LAND
 SURVEYOR, OF PRINCE GEORGE, IN BRITISH COLUMBIA,
 CERTIFY THAT I WAS PRESENT AT AND PERSONALLY
 SUPERINTENDED THE SURVEY REPRESENTED BY THIS
 PLAN AND THAT THE SURVEY AND PLAN ARE CORRECT.
 THE SURVEY WAS COMPLETED ON THE 23RD DAY OF
 DECEMBER, 1997.

R.L. Johns
 R.L. JOHNS, B.C.L.S., C.L.S.

Margaret Martin for Pat Martin Pat Martin
 OWNER: PATRICK JOSEPH MARTIN
Laura Bakermans
 WITNESS
 MARGARET MARTIN
 PRINT NAME
 4550 MARTIN RD
 ADDRESS
 PRINCE GEORGE, B.C.
 DIRECTOR
 OCCUPATION
S. Ni. Lawrence
 S. Ni. Lawrence
 5443 Dalhousie Drive
 Prince George, B.C.
 Professional Engineer

R. L. JOHNS LAND SURVEYING LTD.
 LEGAL AND ENGINEERING SURVEYS
 240 VICTORIA STREET
 PRINCE GEORGE, B. C. V2L 2J4
 PHONE: (250)562-5759
 FAX: (250)562-5703