

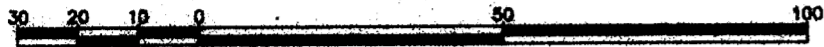
PLAN OF SUBDIVISION OF
PART OF THE REMAINDER
OF THE NORTH 1/2 OF THE
NORTH 1/2 OF THE SOUTH
WEST 1/4 OF DISTRICT
LOT 633, CARIBOO DISTRICT.
B.C.G.S. 93G.097

PLAN NO. PGP 42513

Deposited in the Land Title Office at Prince
George this 14 day of May 1998

REGISTRAR

Scale: 1 : 1250 (Distances are in metres)

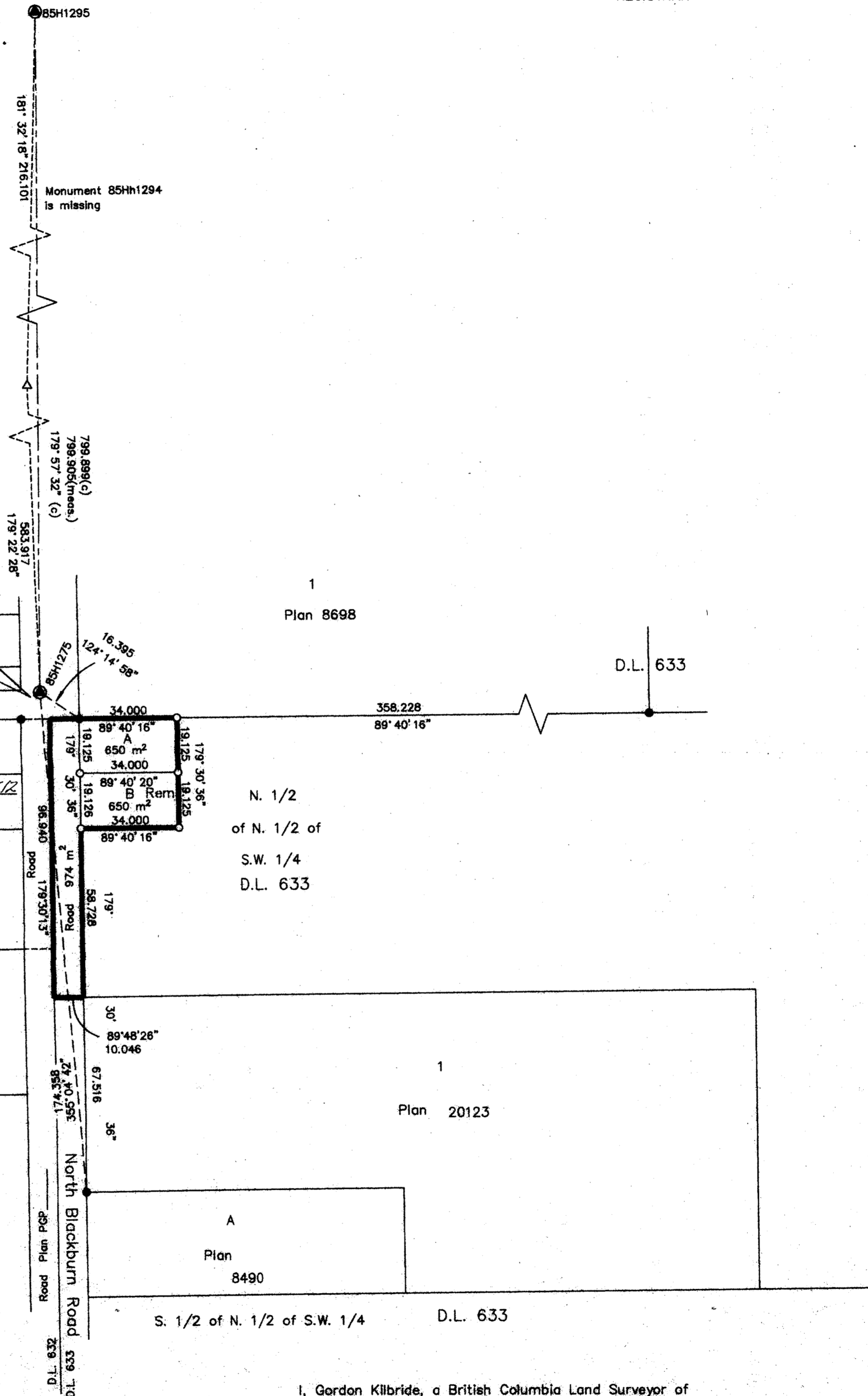
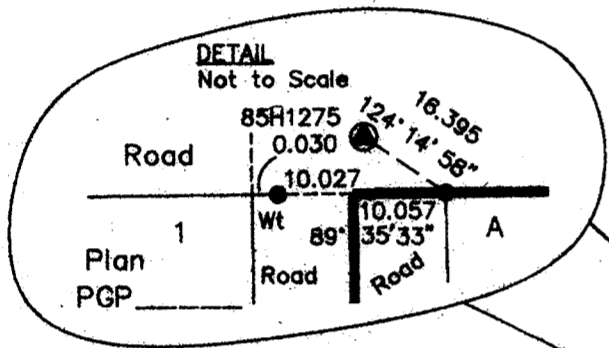


Grid bearings are derived from observations between
control monuments 85H1275 and 85H1295, integrated
survey area number 39, City of Prince George, B.C.

Note: This plan shows ground level measured
distances. Prior to computation of U.T.M.
co-ordinates multiply by the combined
factor 0.99950127

LEGEND

- Standard Iron Post Found
- Standard Iron Post Placed
- ⊙ Control Monument Found
- △ Traverse Hub Placed



Owner: North Central Management Corporation
Inc. No. 163340

Authorized Signatory
Chander Suri
Print Name **CHANDER SURI**

Authorized Signatory

Print Name

Witness to both
Laurie Neenan
Print Name **LAURIE NEENAN**

Address **185 - QUEBEC STREET**
PRINCE GEORGE BC V2L 1W1

Postal Code

Occupation **SALES CLERK**

Approved under the Land Title Act this 1st day of
June 1998

Approving Officer
[Signature]
City of Prince George

I, Gordon Kilbride, a British Columbia Land Surveyor of
Prince George in British Columbia, certify that I was
present at and personally superintended the survey
represented by this plan and that the survey and plan
are correct. The survey was completed on the 2nd day
of December, 1997.

Gordon Kilbride
Gordon Kilbride, B.C.L.S.
LTO Client No. 010908

This plan lies within the Fraser-Fort
George Regional District.

KILBRIDE LAND SURVEYING LTD.
British Columbia Land Surveyors
Prince George, B.C.
Ph: (250) 562-1196 Fax: 562-3656

F.B.- WF3 D.L.- 632 File No. 970752-2