

PLAN OF SUBDIVISION OF
PART OF THE REMAINDER
OF THE NORTH EAST 1/4
OF THE SOUTH EAST 1/4
OF DISTRICT LOT 632,
CARIBOO DISTRICT.

B.C.G.S. 93G.097

PLAN NO. PGP 42512

Deposited in the Land Title Office at Prince
George this 14 day of May 1998

REGISTRAR

Scale: 1 : 1250 (Distances are in metres)

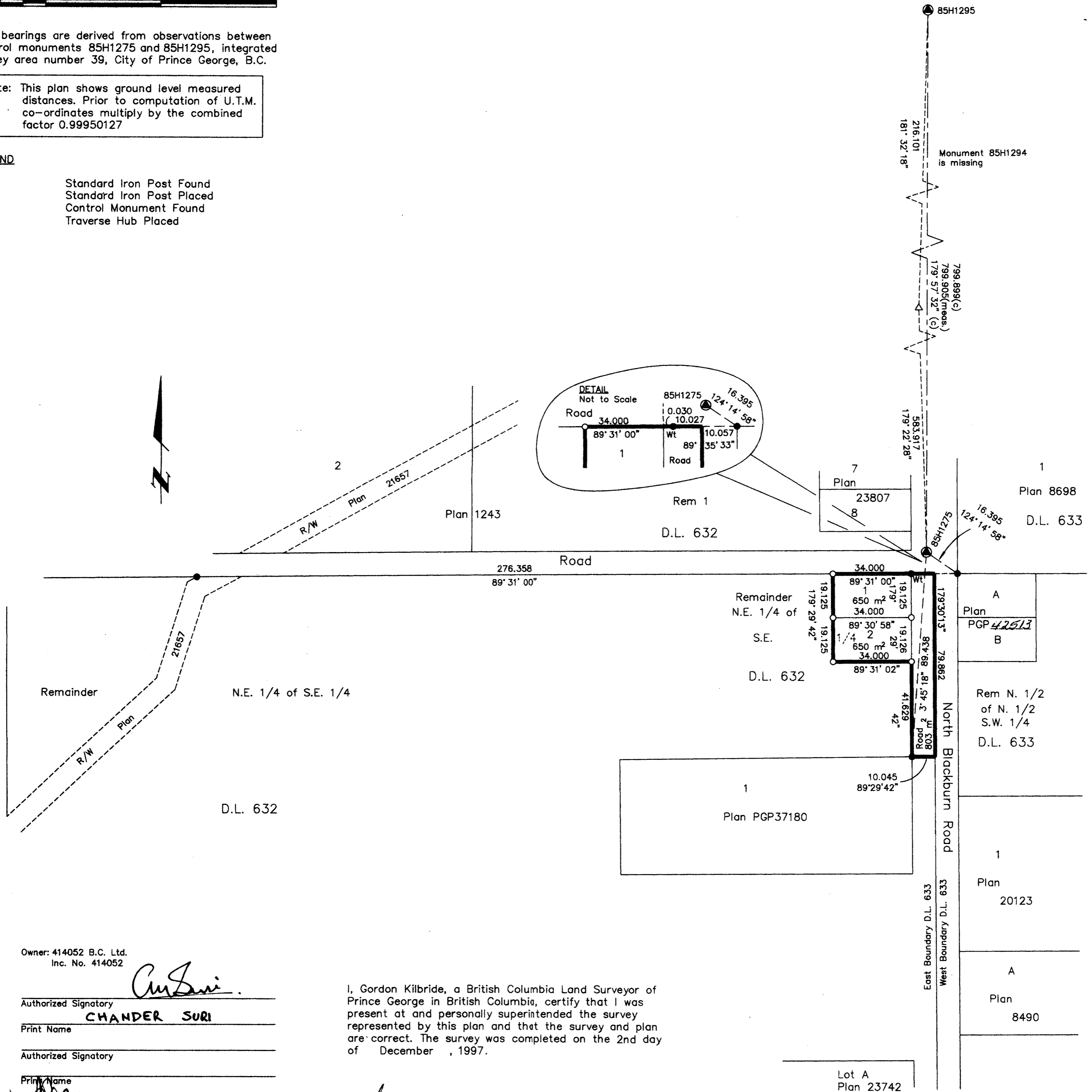


Grid bearings are derived from observations between control monuments 85H1275 and 85H1295, integrated survey area number 39, City of Prince George, B.C.

Note: This plan shows ground level measured distances. Prior to computation of U.T.M. co-ordinates multiply by the combined factor 0.99950127

LEGEND

- Standard Iron Post Found
- Standard Iron Post Placed
- ⊙ Control Monument Found
- △ Traverse Hub Placed



Owner: 414052 B.C. Ltd.
Inc. No. 414052

Authorized Signatory
CHANDER SURI

Print Name

Authorized Signatory

Print Name

Witness to both

Laurie Nebrin

Print Name

185 QUEBEC STREET

Address

PRINCE GEORGE BC V2L 1W1

Postal Code

SMILES CLERK

Occupation

I, Gordon Kilbride, a British Columbia Land Surveyor of Prince George in British Columbia, certify that I was present at and personally superintended the survey represented by this plan and that the survey and plan are correct. The survey was completed on the 2nd day of December, 1997.

Gordon Kilbride

Gordon Kilbride, B.C.L.S.
LTO Client No. 010909

Approved under the Land Title Act this 5th day of June, 1998

Ed Chant
Approving Officer
City of Prince George

This plan lies within the Fraser-Fort
George Regional District.

KILBRIDE LAND SURVEYING LTD.
British Columbia Land Surveyors
Prince George, B.C.
Ph: (250) 562-1196 Fax: 562-3656

F.B.- WF3 | D.L.- 632 | File No. 970752-1