

PLAN OF SUBDIVISION OF
LOT 91, PLAN 13589
DISTRICT LOT 1599
CARIBOO DISTRICT

B.C.G.S. 93G.086



SCALE = 1 : 500
ALL DISTANCES ARE SHOWN IN METRES.

THIS PLAN SHOWS GROUND-LEVEL MEASURED DISTANCES.
PRIOR TO COMPUTATION OF U.T.M. COORDINATES, MULTIPLY
BY COMBINED FACTOR 0.99948551.

GRID BEARINGS ARE DERIVED FROM OBSERVATIONS
BETWEEN CONTROL MONUMENTS 86H1483, AND 86H1511,
INTEGRATED SURVEY AREA NUMBER 39, PRINCE GEORGE.

LEGEND

- STANDARD IRON POST FOUND
- STANDARD IRON POST PLACED
- ⊙ CONTROL MONUMENT
- ⊗ STANDARD CAPPED POST FOUND

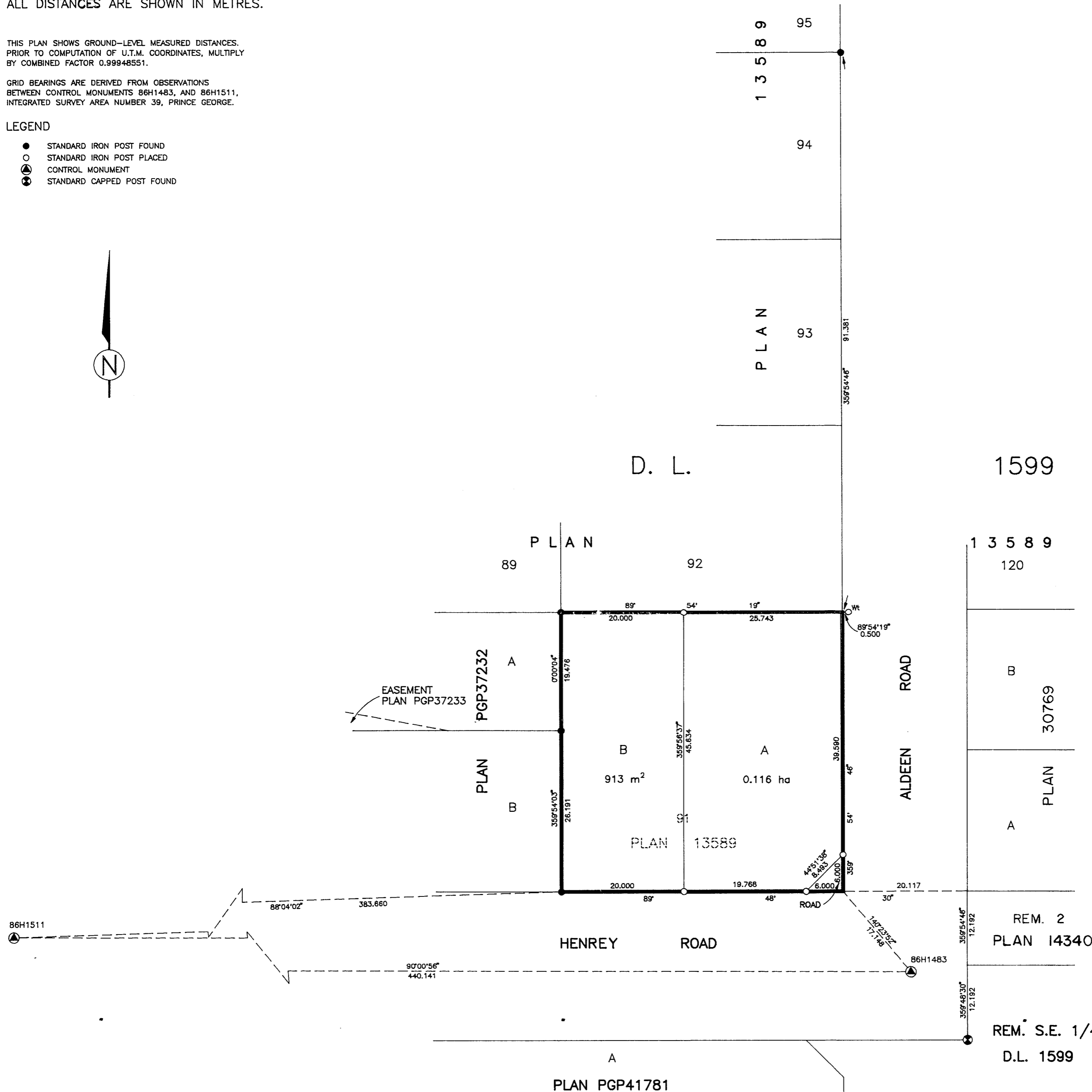


PLAN No. PGP 42455

DEPOSITED IN THE LAND TITLE OFFICE
AT PRINCE GEORGE, B.C., THIS 29
DAY OF April, 1998.

REGISTRAR

LK.



REM. S.E. 1/4
D.L. 1599

APPROVED UNDER THE LAND TITLE ACT
THIS 29th DAY OF April, 1998

E. Chant
APPROVING OFFICER, CITY OF PRINCE GEORGE.

I, RONALD L. JOHNS, A BRITISH COLUMBIA LAND SURVEYOR, OF PRINCE GEORGE, IN BRITISH COLUMBIA, CERTIFY THAT I WAS PRESENT AT AND PERSONALLY SUPERINTENDED THE SURVEY REPRESENTED BY THIS PLAN AND THAT THE SURVEY AND PLAN ARE CORRECT. THE SURVEY WAS COMPLETED ON THE 1ST DAY OF APRIL, 1998.

R.L. Johns

R.L. JOHNS, B.C.L.S., C.L.S.

Clarence Alexander Harrold
OWNER: CLARENCE ALEXANDER HARROLD
R.L. Johns
WITNESS
R.L. JOHNS
PRINT NAME
240 VICTORIA STREET
ADDRESS
PRINCE GEORGE, B.C.
B.C. LAND SURVEYOR
OCCUPATION

THIS PLAN LIES WITHIN THE FRASER-FORT GEORGE REGIONAL DISTRICT.

R. L. JOHNS LAND SURVEYING LTD.
LEGAL AND ENGINEERING SURVEYS
240 VICTORIA STREET
PRINCE GEORGE, B. C. V2L 2J4
PHONE: (250)562-5759
FAX: (250)562-5703

97-319 UB-10