

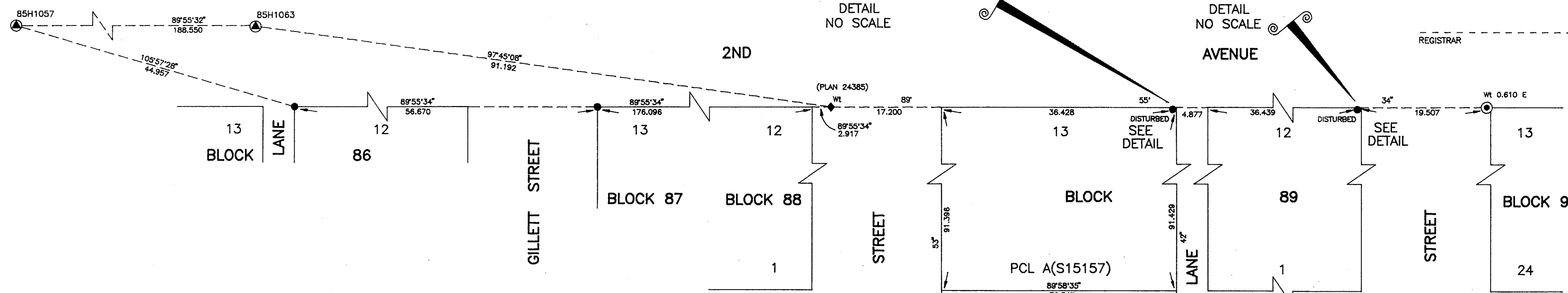
DEPOSITED IN THE LAND TITLE OFFICE
AT PRINCE GEORGE, B.C., THIS 10th
DAY OF March, 19 98

REGISTRAR



DETAIL
NO SCALE

DETAIL
NO SCALE



REFERENCE PLAN OF CONSOLIDATION OF
ASSIGNED LOT A(60001M), BLOCK 62 AND
ASSIGNED LOT A(65286M), BLOCK 59, PLAN 752
DISTRICT LOT 937
CARIBOO DISTRICT

B.C.G.S. 93G.097
PURSUANT TO SECTION 100(1)(b) OF THE LAND TITLE ACT

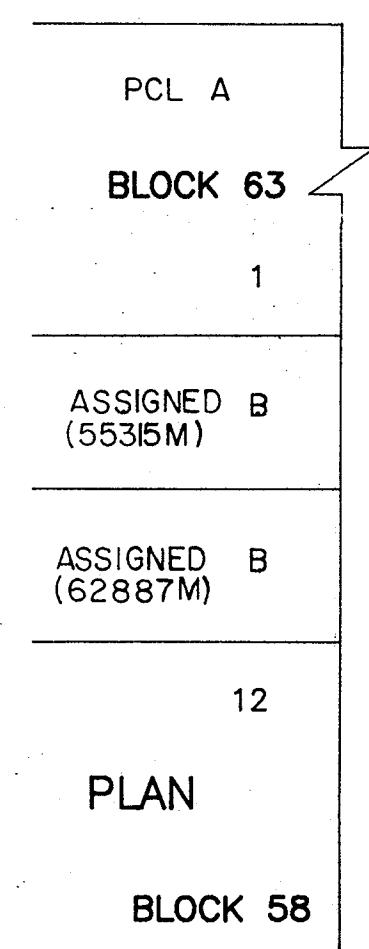
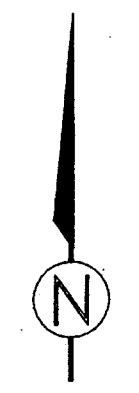


SCALE = 1 : 500
ALL DISTANCES ARE SHOWN IN METRES.

THIS PLAN SHOWS GROUND-LEVEL MEASURED DISTANCES.
PRIOR TO COMPUTATION OF U.T.M. COORDINATES, MULTIPLY
BY COMBINED FACTOR 0.99951040.

GRID BEARINGS ARE DERIVED FROM OBSERVATIONS
BETWEEN CONTROL MONUMENTS 85H1057, AND 85H1063,
INTEGRATED SURVEY AREA NUMBER 39, PRINCE GEORGE.

- LEGEND
- STANDARD IRON POST FOUND
 - STANDARD IRON POST PLACED
 - ▲ CONTROL MONUMENT
 - ◆ ALUMINUM BOLT FOUND
 - ⊙ STANDARD CONCRETE POST FOUND



D. L.

I, RONALD L. JOHNS, A BRITISH COLUMBIA LAND SURVEYOR, OF PRINCE GEORGE, IN BRITISH COLUMBIA, CERTIFY THAT I WAS PRESENT AT AND PERSONALLY SUPERINTENDED THE SURVEY REPRESENTED BY THIS PLAN AND THAT THE SURVEY AND PLAN ARE CORRECT. THE SURVEY WAS COMPLETED ON THE 16TH DAY OF FEBRUARY, 1998.

R.L. Johns
R.L. JOHNS, B.C.L.S., C.L.S.

THIS PLAN LIES WITHIN THE FRASER-FORT GEORGE REGIONAL DISTRICT.

R. L. JOHNS LAND SURVEYING LTD.
LEGAL AND ENGINEERING SURVEYS
240 VICTORIA STREET
PRINCE GEORGE, B. C. V2L 2J4
PHONE: (250)562-5759
FAX: (250)562-5703