

PLAN OF SUBDIVISION OF LOT 1,
 PLAN 33284, AND PART OF THE
 REMAINDER OF LOT A, PLAN 18994,
 DISTRICT LOT 936, CARIBOO DISTRICT.

B.C.G.S. 93G.097

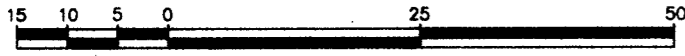
PLAN NO. PGP42143

Deposited in the Land Title Office at Prince
 George this 20 day of Feb. 1998

LK

 REGISTRAR

Scale: 1 : 750 (Distances are in metres)

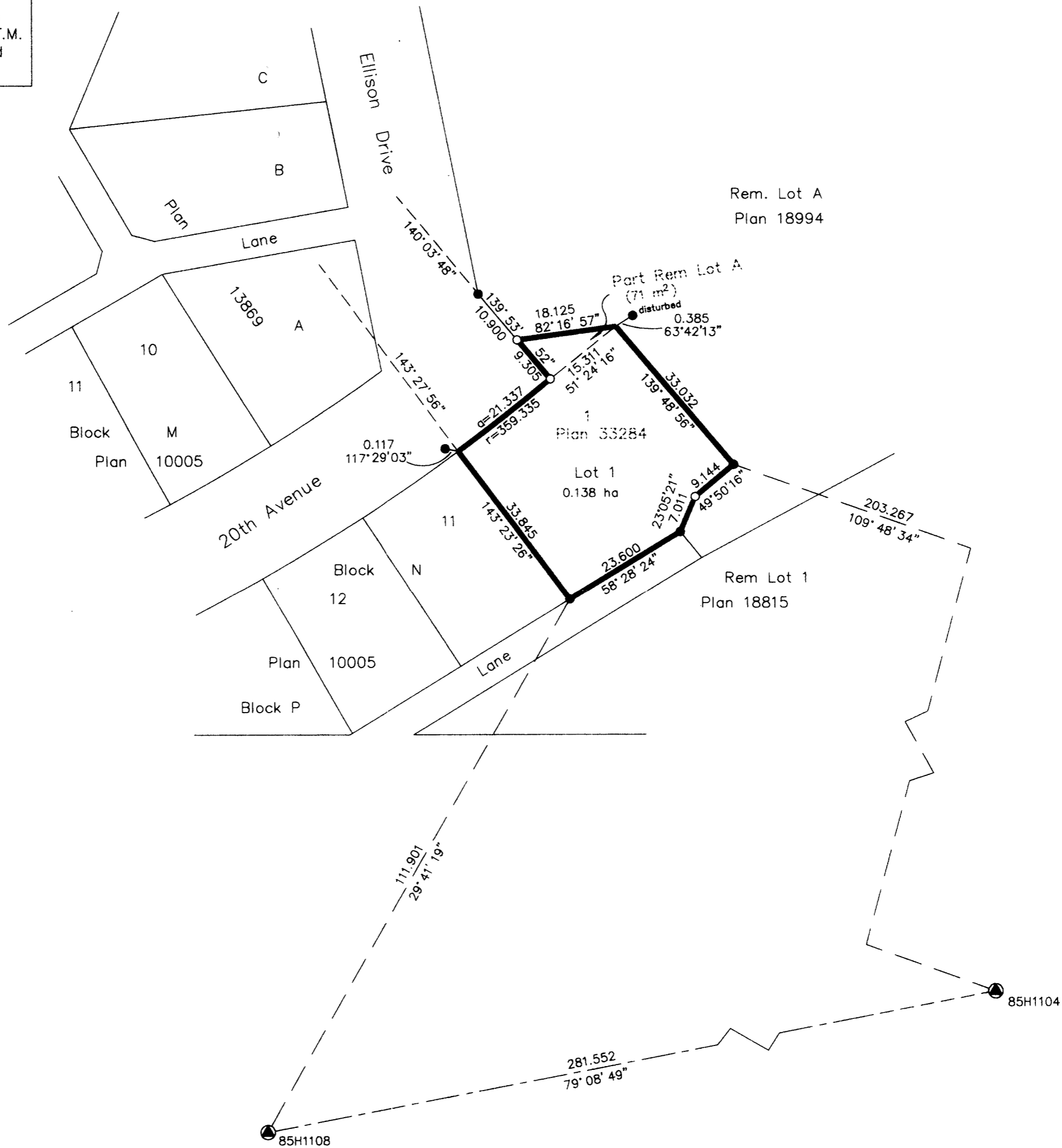


Grid bearings are derived from observations between
 control monuments 85H1104 and 85H1108, integrated
 survey area number 39, City of Prince George, B.C.

Note: This plan shows ground level measured
 distances. Prior to computation of U.T.M.
 co-ordinates multiply by the combined
 factor 0.99951342

LEGEND

- Standard Iron Post Found
- Standard Iron Post Placed
- ⊙ Control Monument Found



I, Gordon Kilbride, a British Columbia Land Surveyor of
 Prince George in British Columbia, certify that I was
 present at and personally superintended the survey
 represented by this plan and that the survey and plan
 are correct. The survey was completed on the 31st day
 of July, 1996.

Gordon Kilbride

 Gordon Kilbride, B.C.L.S.
 LTO Client No. 010909

This plan lies within the Fraser-Fort
 George Regional District.

KILBRIDE LAND SURVEYING LTD. British Columbia Land Surveyors Prince George, B.C. Ph: (604) 562-1196 Fax: 562-3656		
F.B.- VH21	D.L.- 936	File No. - 960571

Owner:
Mary Kerdyban

 Mary Kerdyban
 Witness
Gordon Kilbride

 Gordon Kilbride
 Print Name
 324 Vancouver St.

 Address
 Prince George V2L 2N9

 Postal Code
 B.-C. Land Surveyor

 Occupation

Approved under the Land Title Act this day of
 February, 1998 6th
Ch. Chute

 Approving Officer
 City of Prince George