

REFERENCE PLAN TO ACCOMPANY CITY OF PRINCE GEORGE  
 BY-LAW NO. 6846 CLOSING ROAD ADJACENT TO  
 REM. LOT A, PLAN 8482, AND PCL. A, PLAN PGP35416  
 DISTRICT LOT 2611  
 CARIBOO DISTRICT  
 B.C.G.S 93G.087

PURSUANT TO SECTION 120 OF THE LAND TITLE ACT



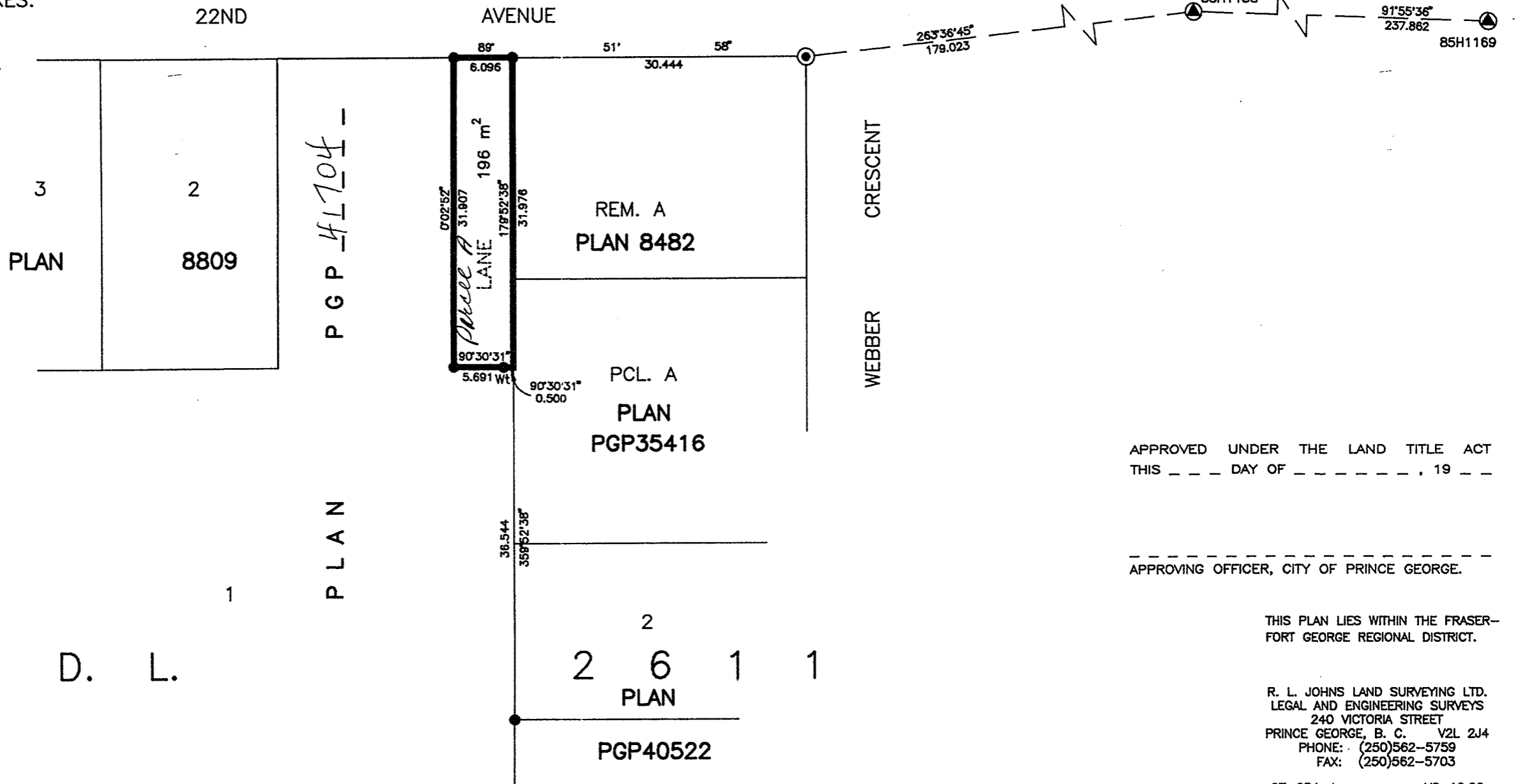
SCALE = 1 : 500  
 ALL DISTANCES ARE SHOWN IN METRES.

THIS PLAN SHOWS GROUND-LEVEL MEASURED DISTANCES.  
 PRIOR TO COMPUTATION OF U.T.M. COORDINATES, MULTIPLY  
 BY COMBINED FACTOR 0.99950744.

GRID BEARINGS ARE DERIVED FROM OBSERVATIONS  
 BETWEEN CONTROL MONUMENTS 85H1188, AND 85H1169,  
 INTEGRATED SURVEY AREA NUMBER 39, PRINCE GEORGE.

LEGEND

- STANDARD IRON POST FOUND
- ⊙ CONCRETE POST FOUND
- ⊕ CONTROL MONUMENT



PLAN No. PGP 42052

DEPOSITED IN THE LAND TITLE OFFICE  
 AT PRINCE GEORGE, B.C., THIS 21  
 DAY OF Jan, 1998

REGISTRAR RJK

APPROVED UNDER THE LAND TITLE ACT  
 THIS \_\_\_ DAY OF \_\_\_\_\_, 19\_\_

APPROVING OFFICER, CITY OF PRINCE GEORGE.

I, RONALD L. JOHNS, A BRITISH COLUMBIA LAND  
 SURVEYOR, OF PRINCE GEORGE, IN BRITISH COLUMBIA,  
 CERTIFY THAT I WAS PRESENT AT AND PERSONALLY  
 SUPERINTENDED THE SURVEY REPRESENTED BY THIS  
 PLAN AND THAT THE SURVEY AND PLAN ARE CORRECT.  
 THE SURVEY WAS COMPLETED ON THE 22ND DAY OF  
 AUGUST, 1997.

R.L. Johns  
 R.L. JOHNS, B.C.L.S., C.L.S.

THIS PLAN LIES WITHIN THE FRASER-  
 FORT GEORGE REGIONAL DISTRICT.

R. L. JOHNS LAND SURVEYING LTD.  
 LEGAL AND ENGINEERING SURVEYS  
 240 VICTORIA STREET  
 PRINCE GEORGE, B. C. V2L 2J4  
 PHONE: (250)562-5759  
 FAX: (250)562-5703

97-054-1 Y6-19,20