

REFERENCE PLAN OF CONSOLIDATION OF
LOT 55, PLAN 13198
DISTRICT LOTS 937 AND 938
AND THAT PART OF CLOSED FIRST AVENUE
ADJACENT TO LOT 55, PLAN 13198
AS SHOWN ON PLAN 19206
DISTRICT LOT 937
CARIBOO DISTRICT

PLAN No. PGP 42023

DEPOSITED IN THE LAND TITLE OFFICE
AT PRINCE GEORGE, B.C., THIS 14
DAY OF Jan 1998

REGISTRAR *[Signature]*

B.C.G.S. 93G.097

PURSUANT TO SECTION 100 OF THE LAND TITLE ACT.



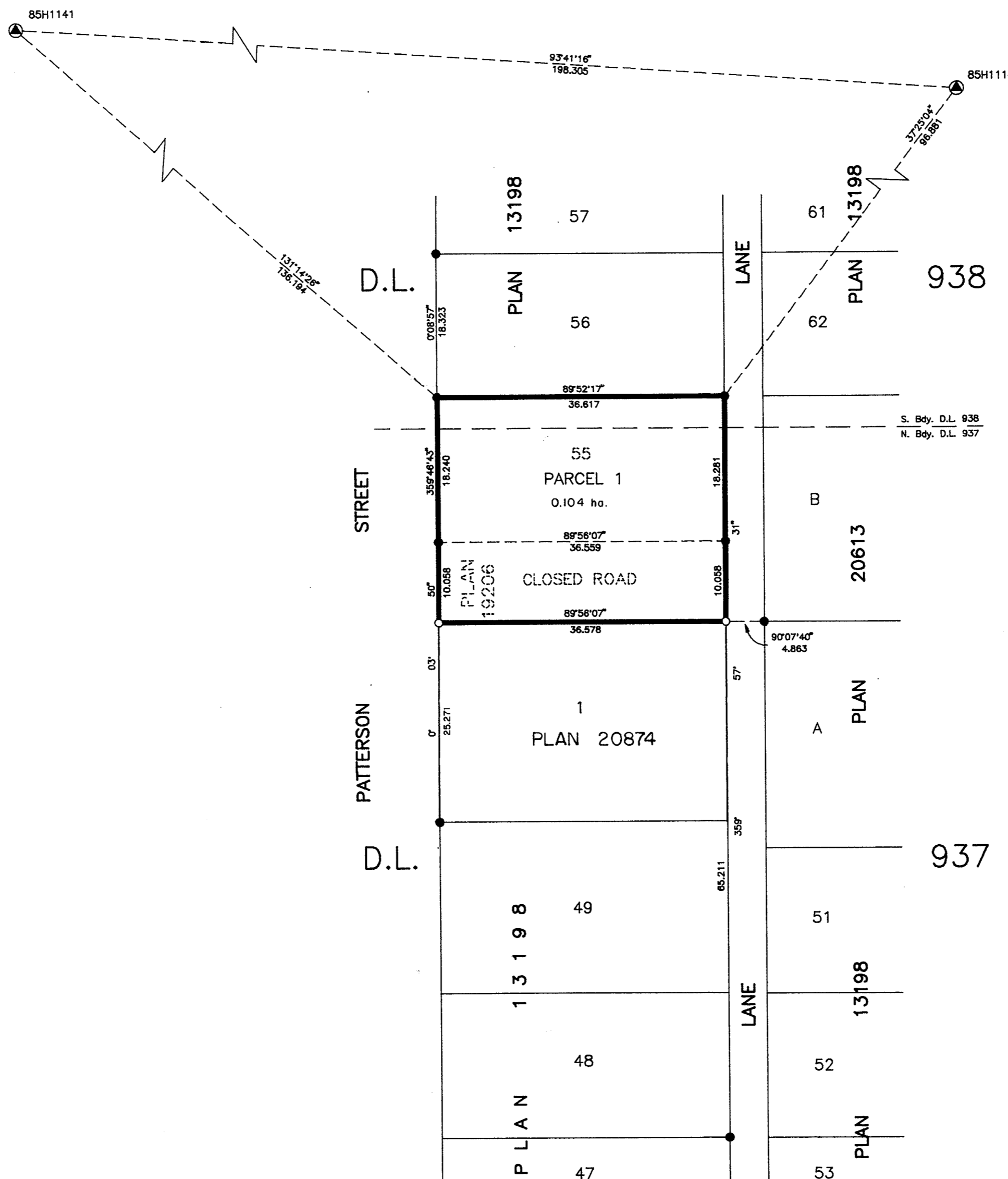
SCALE = 1 : 500
ALL DISTANCES ARE SHOWN IN METRES

THIS PLAN SHOWS GROUND-LEVEL MEASURED DISTANCES.
PRIOR TO COMPUTATION OF U.T.M. COORDINATES, MULTIPLY
BY COMBINED FACTOR 0.99950782.

GRID BEARINGS ARE DERIVED FROM OBSERVATIONS
BETWEEN CONTROL MONUMENTS 85H1114, AND 85H1141,
INTEGRATED SURVEY AREA NUMBER 39, PRINCE GEORGE.

LEGEND

- STANDARD IRON POST FOUND
- STANDARD IRON POST PLACED
- ⊙ CONTROL MONUMENT



I, RONALD L. JOHNS, A BRITISH COLUMBIA LAND SURVEYOR, OF PRINCE GEORGE, IN BRITISH COLUMBIA, CERTIFY THAT I WAS PRESENT AT AND PERSONALLY SUPERINTENDED THE SURVEY REPRESENTED BY THIS PLAN AND THAT THE SURVEY AND PLAN ARE CORRECT. THE SURVEY WAS COMPLETED ON THE 8TH DAY OF OCTOBER, 1997.

[Signature]
R.L. JOHNS, B.C.L.S., C.L.S.

THIS PLAN LIES WITHIN THE FRASER-FORT GEORGE REGIONAL DISTRICT.

R. L. JOHNS LAND SURVEYING LTD.
LEGAL AND ENGINEERING SURVEYS
240 VICTORIA STREET
PRINCE GEORGE, B. C. V2L 2J4
PHONE: (250)562-5759
FAX: (250)562-5703