

REFERENCE PLAN OF CONSOLIDATION OF
 LOTS 20, 21, 22, BLOCK 27, PLAN 1268 &
 REMAINDER OF CLOSED LANE, PLAN 31293
 DISTRICT LOT 343

CARIBOO DISTRICT B.C.G.S. 93G.097

PURSUANT TO SECTION 100(1)(b) OF THE LAND TITLE ACT



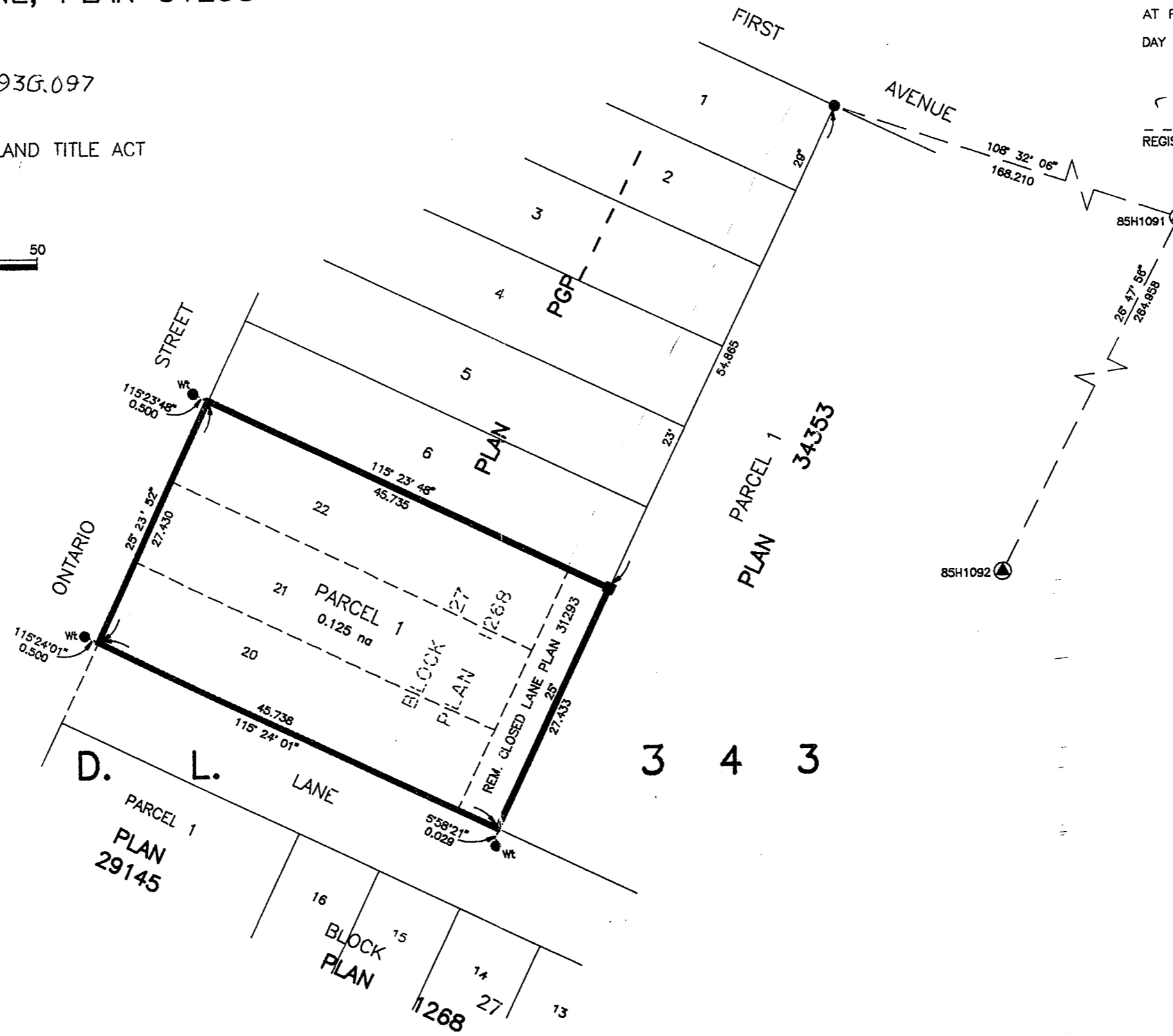
SCALE = 1 : 500
 ALL DISTANCES ARE SHOWN IN METRES.

THIS PLAN SHOWS GROUND-LEVEL MEASURED DISTANCES.
 PRIOR TO COMPUTATION OF U.T.M. COORDINATES, MULTIPLY
 BY COMBINED FACTOR 0.99951464.

GRID BEARINGS ARE DERIVED FROM OBSERVATIONS
 BETWEEN CONTROL MONUMENTS 85H1091, AND 85H1092,
 INTEGRATED SURVEY AREA NUMBER 39.

LEGEND

- STANDARD IRON POST FOUND
- STANDARD LEAD PLUG FOUND
- ▲ CONTROL MONUMENT



PLAN No. PGP 41989

DEPOSITED IN THE LAND TITLE OFFICE
 AT PRINCE GEORGE, B.C., THIS 08
 DAY OF Jan, 1998.

LK
 REGISTRAR

I, RONALD L. JOHNS, A BRITISH COLUMBIA LAND SURVEYOR, OF PRINCE GEORGE, IN BRITISH COLUMBIA, CERTIFY THAT I WAS PRESENT AT AND PERSONALLY SUPERINTENDED THE SURVEY REPRESENTED BY THIS PLAN AND THAT THE SURVEY AND PLAN ARE CORRECT. THE SURVEY WAS COMPLETED ON THE 14TH DAY OF JULY, 1997.

R.L. Johns
 R.L. JOHNS, B.C.L.S.

THIS PLAN LIES WITHIN THE FRASER-FORT GEORGE REGIONAL DISTRICT.

R. L. JOHNS LAND SURVEYING LTD.
 LEGAL AND ENGINEERING SURVEYS
 240 VICTORIA STREET
 PRINCE GEORGE, B. C. V2L 2J4
 PHONE: (250)562-5759
 FAX: (250)562-5703

97-163 V4-5,10