

PLAN OF SUBDIVISION OF
 REM. LOT 4 & REM. LOT 5, PLAN 8970
 DISTRICT LOT 4048
 CARIBOO DISTRICT

B.C.G.S. 93G.096

PLAN No. PGP 41855
 DEPOSITED IN THE LAND TITLE OFFICE
 AT PRINCE GEORGE, B.C., THIS 26
 DAY OF NOV 19 97

REGISTRAR *L.K.*

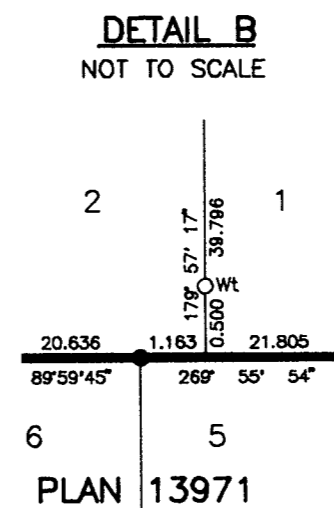
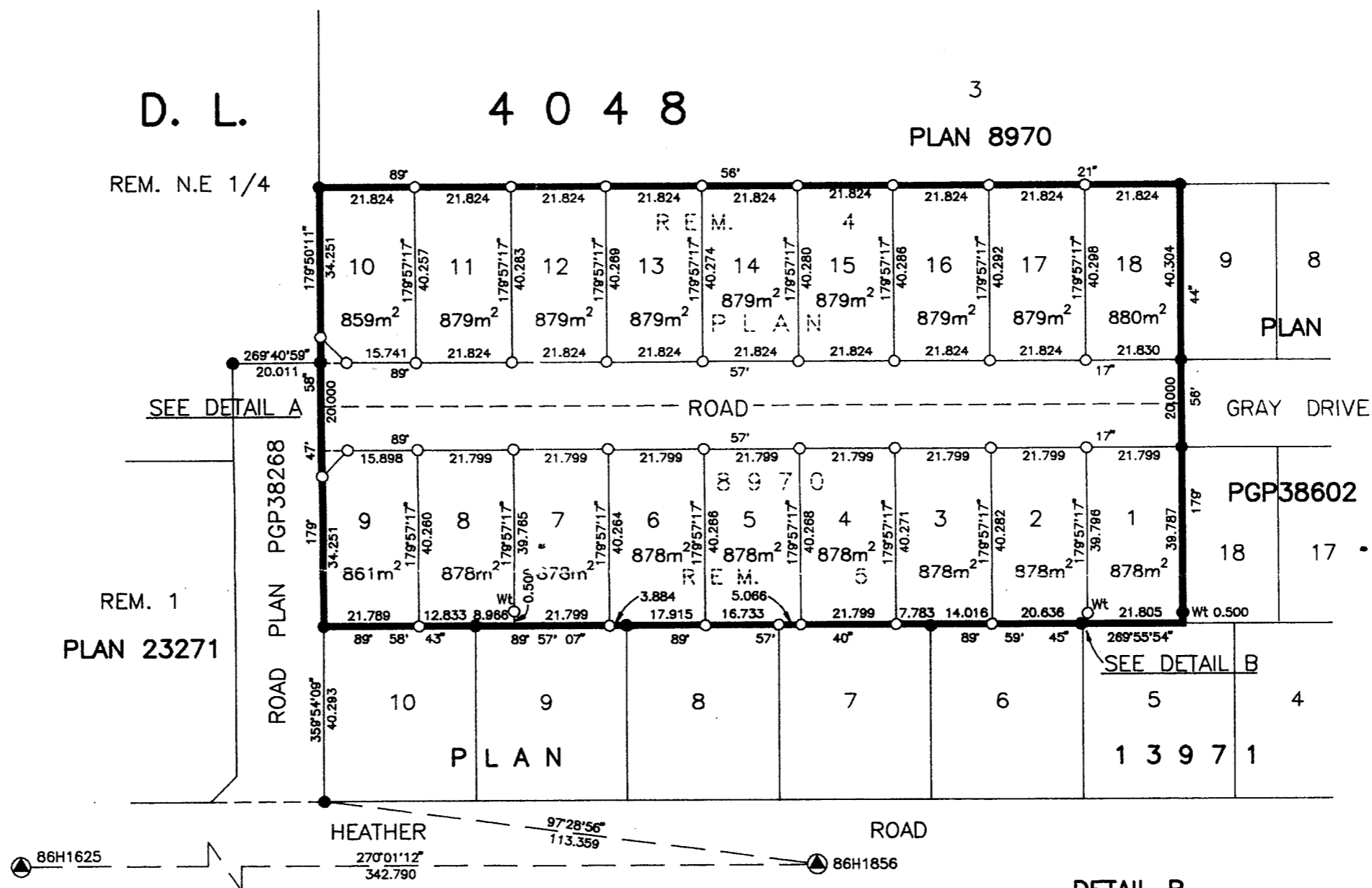
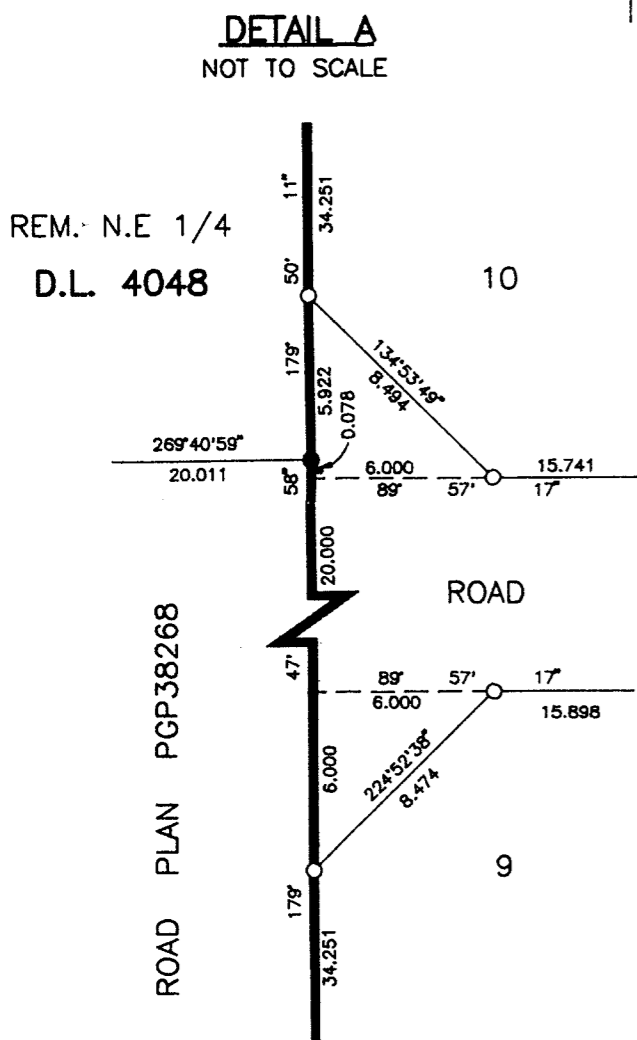
0 20 40 60 80 100
 SCALE = 1 : 1250
 ALL DISTANCES ARE SHOWN IN METRES.

THIS PLAN SHOWS GROUND-LEVEL MEASURED DISTANCES.
 PRIOR TO COMPUTATION OF U.T.M. COORDINATES, MULTIPLY
 BY COMBINED FACTOR 0.99948202.

GRID BEARINGS ARE DERIVED FROM OBSERVATIONS
 BETWEEN CONTROL MONUMENTS 86H1856, AND 86H1625,
 INTEGRATED SURVEY AREA NUMBER 39, PRINCE GEORGE.

LEGEND

- STANDARD IRON POST FOUND
- STANDARD IRON POST PLACED
- ▲ CONTROL MONUMENT



ROYAL BANK OF CANADA

 AUTHORIZED SIGNATORY
Steve Cowie
 PRINT NAME

 AUTHORIZED SIGNATORY
Russell Barnes
 PRINT NAME

NEW CENTURY ENTERPRISES LTD. INC.# 190215

 AUTHORIZED SIGNATORY
 PER: *Gordon Langer*
 AUTHORIZED SIGNATORY
 PRINT NAME

 AUTHORIZED SIGNATORY
 PRINT NAME

APPROVED UNDER THE LAND TITLE ACT
 THIS 14th DAY OF November 19 97

 APPROVING OFFICER, CITY OF PRINCE GEORGE.

I, RONALD L. JOHNS, A BRITISH COLUMBIA LAND SURVEYOR, OF PRINCE GEORGE, IN BRITISH COLUMBIA, CERTIFY THAT I WAS PRESENT AT AND PERSONALLY SUPERINTENDED THE SURVEY REPRESENTED BY THIS PLAN AND THAT THE SURVEY AND PLAN ARE CORRECT. THE SURVEY WAS COMPLETED ON THE 19TH DAY OF AUGUST, 1997.

R.L. Johns
 R.L. JOHNS, B.C.L.S., C.L.S.

Francis P. Stewart
 WITNESS (AS TO BOTH SIGNATURES)
 PRINT NAME
 118-3130 LANSDOWNE RD
 ADDRESS
 PRINCE GEORGE, B.C.
 STENOGRAPHER
 OCCUPATION

R.L. Johns
 WITNESS (AS TO BOTH SIGNATURES)
 PRINT NAME
 240 VICTORIA STREET
 ADDRESS
 PRINCE GEORGE, B.C.
 B.C. LAND SURVEYOR
 OCCUPATION

THIS PLAN LIES WITHIN THE FRASER-FORT GEORGE REGIONAL DISTRICT.

R. L. JOHNS LAND SURVEYING LTD.
 LEGAL AND ENGINEERING SURVEYS
 240 VICTORIA STREET
 PRINCE GEORGE, B. C. V2L 2J4
 PHONE: (250)562-5759
 FAX: (250)562-5703

92-88-51 US-15