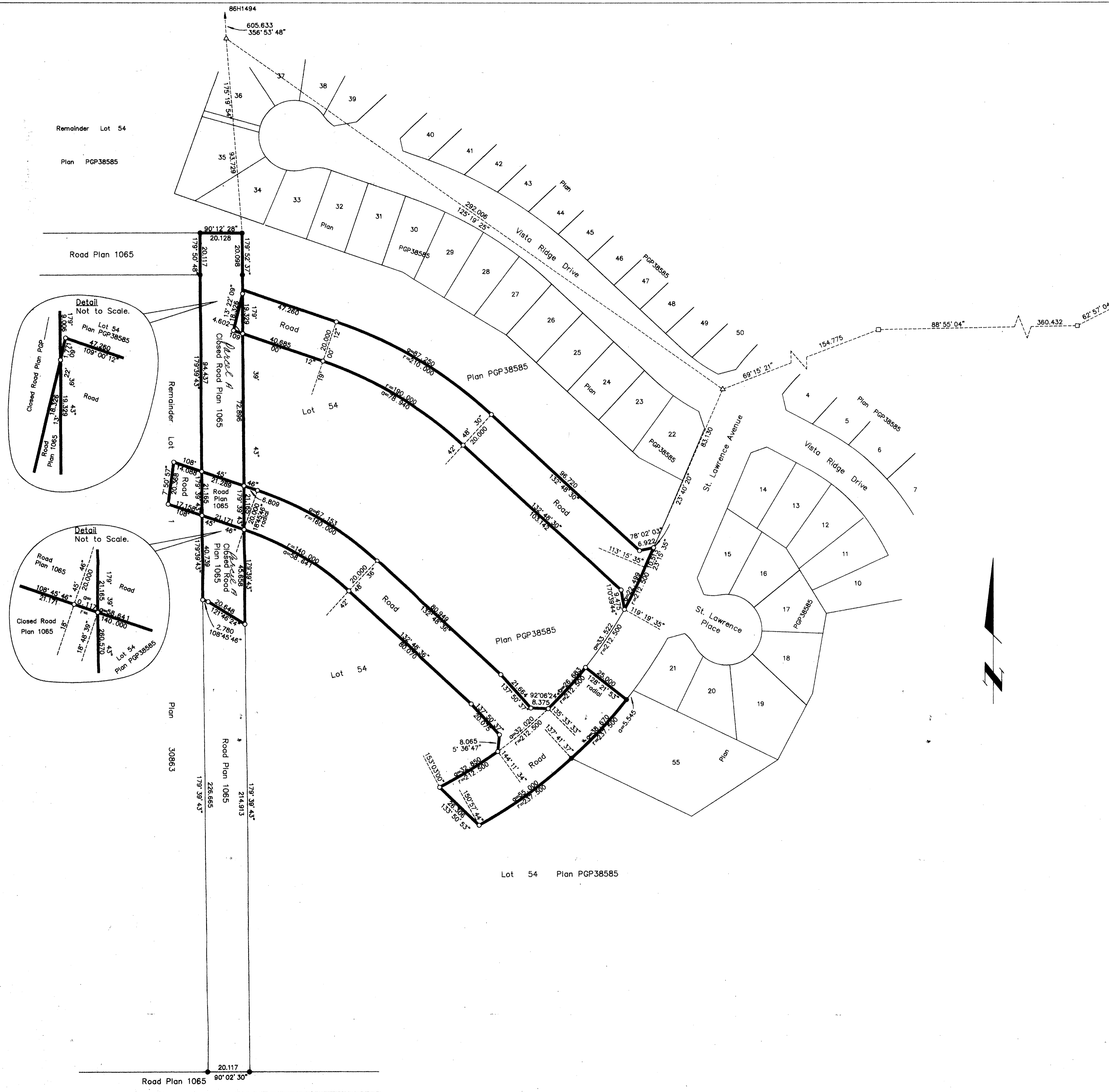


REGISTRAR



REFERENCE PLAN OF ROAD EXCHANGE TO ACCOMPANY CITY OF PRINCE GEORGE BYLAW NO 6829, CLOSING PART OF ROAD SHOWN ON PLAN 1065 (ADJACENT TO LOT 1, PLAN 30863) AND OPENING AS ROAD PART OF REMAINDER OF LOT 1, PLAN 30863 AND PART OF LOT 54, PLAN PGP38585, DISTRICT LOT 1605, CARIBOO DISTRICT.

Pursuant to Section 574 of the Municipal Act. B.C.G.S. 93G.087

Scale: 1 : 1000 (Distances are in metres)

Grid bearings are derived from observations between control monuments 86H1545 and 86H1821, integrated survey area number 39, City of Prince George, B.C.

Note: This plan shows ground level measured distances. Prior to computation of U.T.M. co-ordinates multiply by the combined factor 0.99950100

- LEGEND**
- Lead Plug Placed
 - Standard Iron Post Found
 - Standard Iron Post Placed
 - ⊙ Control Monument
 - △ Traverse Hub Placed

Closed Road
within Plan 1065.....0.319ha

Opened Road
within Plan PGP38585.....1.05ha,
within Plan 30863.....312m²

I, Dale L. Keown, a British Columbia Land Surveyor of Prince George in British Columbia, certify that I was present at and personally superintended the survey represented by this plan and that the survey and plan are correct. The survey was completed on the 2nd day of September, 1997.

Dale Keown
Dale L. Keown, B.C.L.S.

This plan lies within the Fraser-Fort George Regional District.

KILBRIDE LAND SURVEYING LTD.
British Columbia Land Surveyors
Prince George, B.C.
Ph: (604) 562-1196 Fax: 562-3656

F.B.- RA D.L.- 1605 REF. NO.- 9702038L