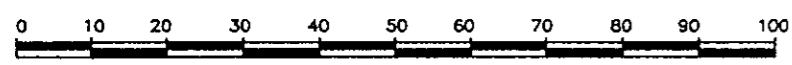


PLAN OF SUBDIVISION OF LOT 1, PLAN 20571
S.E. 1/4 DISTRICT LOT 2432
CARIBOO DISTRICT

B.C.G.S. 93J.007

PLAN No. PGP 41715

DEPOSITED IN THE LAND TITLE OFFICE
AT PRINCE GEORGE, B.C., THIS 20
DAY OF Oct. 19 97



SCALE = 1 : 1000
ALL DISTANCES ARE SHOWN IN METRES.

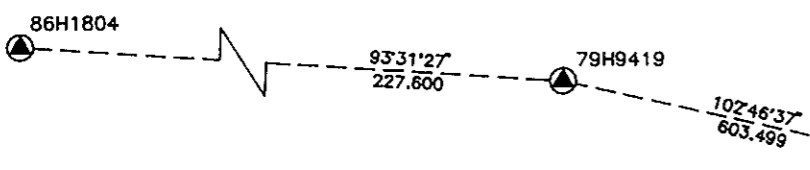
THIS PLAN SHOWS GROUND-LEVEL MEASURED DISTANCES.
PRIOR TO COMPUTATION OF U.T.M. COORDINATES, MULTIPLY
BY COMBINED FACTOR 0.99948500.

GRID BEARINGS ARE DERIVED FROM OBSERVATIONS
BETWEEN CONTROL MONUMENTS 79H9419, AND 86H1804,
INTEGRATED SURVEY AREA NUMBER 39, PRINCE GEORGE.

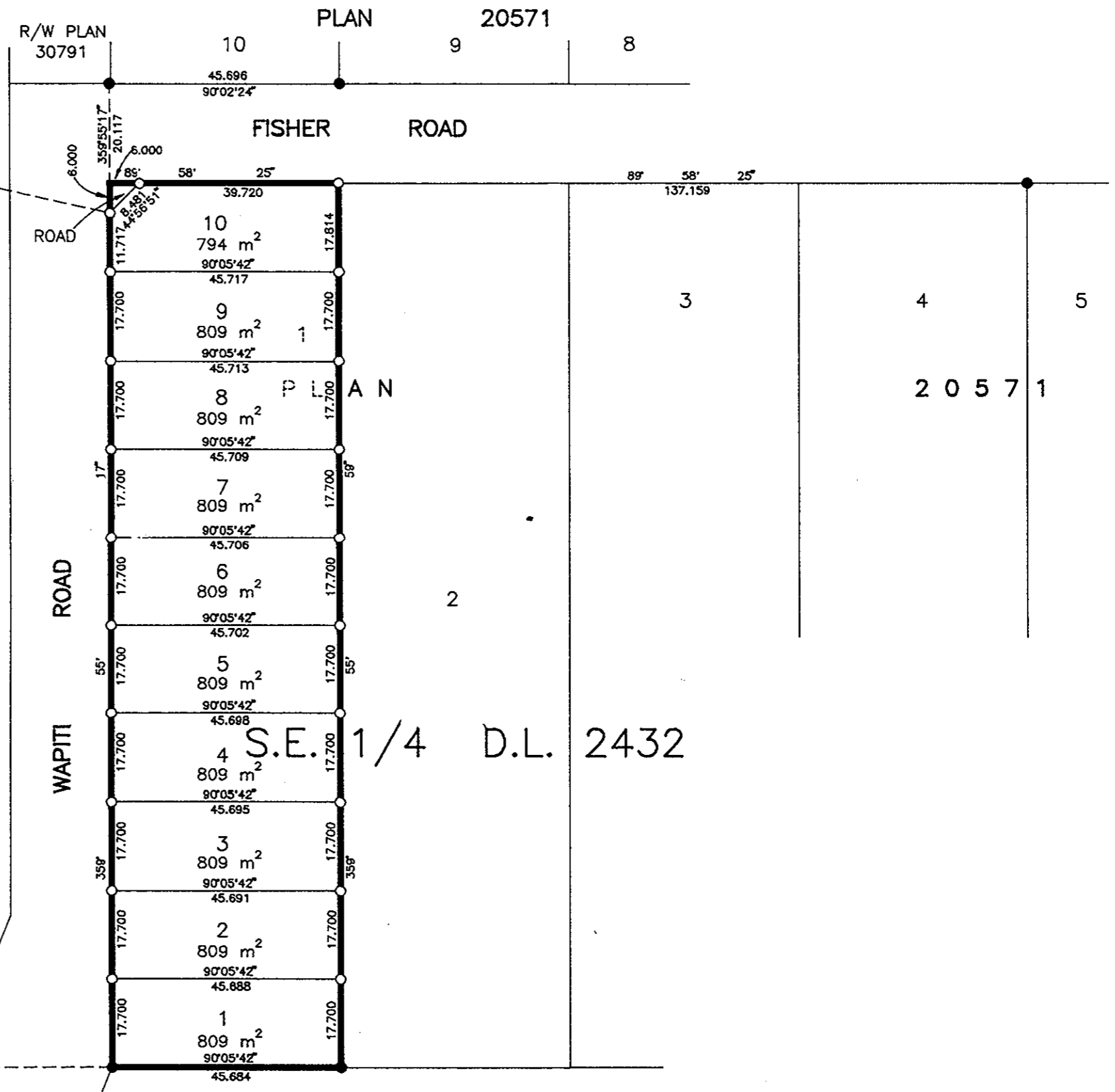
LEGEND

- STANDARD IRON POST FOUND
- STANDARD IRON POST PLACED
- ⊙ CONTROL MONUMENT

REGISTRAR



REM.
S.W. 1/4
D.L. 2432



1
PLAN
PGP41644

KNIGHT
CRESCENT

13
PLAN
16589

REM.
N.E. 1/4
D.L. 2433

APPROVED UNDER THE LAND TITLE ACT
THIS 16th DAY OF Oct. 19 97

Ed. Chert
APPROVING OFFICER, CITY OF PRINCE GEORGE.

I, RONALD L. JOHNS, A BRITISH COLUMBIA LAND SURVEYOR, OF PRINCE GEORGE, IN BRITISH COLUMBIA, CERTIFY THAT I WAS PRESENT AT AND PERSONALLY SUPERINTENDED THE SURVEY REPRESENTED BY THIS PLAN AND THAT THE SURVEY AND PLAN ARE CORRECT. THE SURVEY WAS COMPLETED ON THE 22ND DAY OF SEPTEMBER, 1997.

R.L. Johns
R.L. JOHNS, B.C.L.S., C.L.S.

OWNER: *M. SRDANOVIC*
WITNESS: *Patricia Steinbach*
PRINT NAME: Patricia Steinbach
ADDRESS: 7463 Lambeth Dr. Burnaby, B.C. V5E 4B4
OCCUPATION: homemaker

THIS PLAN LIES WITHIN THE FRASER-FORT GEORGE REGIONAL DISTRICT.

R. L. JOHNS LAND SURVEYING LTD.
LEGAL AND ENGINEERING SURVEYS
240 VICTORIA STREET
PRINCE GEORGE, B. C. V2L 2J4
PHONE: (250)562-5759
FAX: (250)562-5703

86-06-S X8-28,29