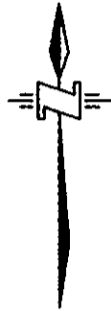
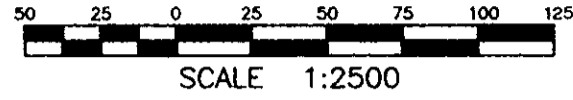
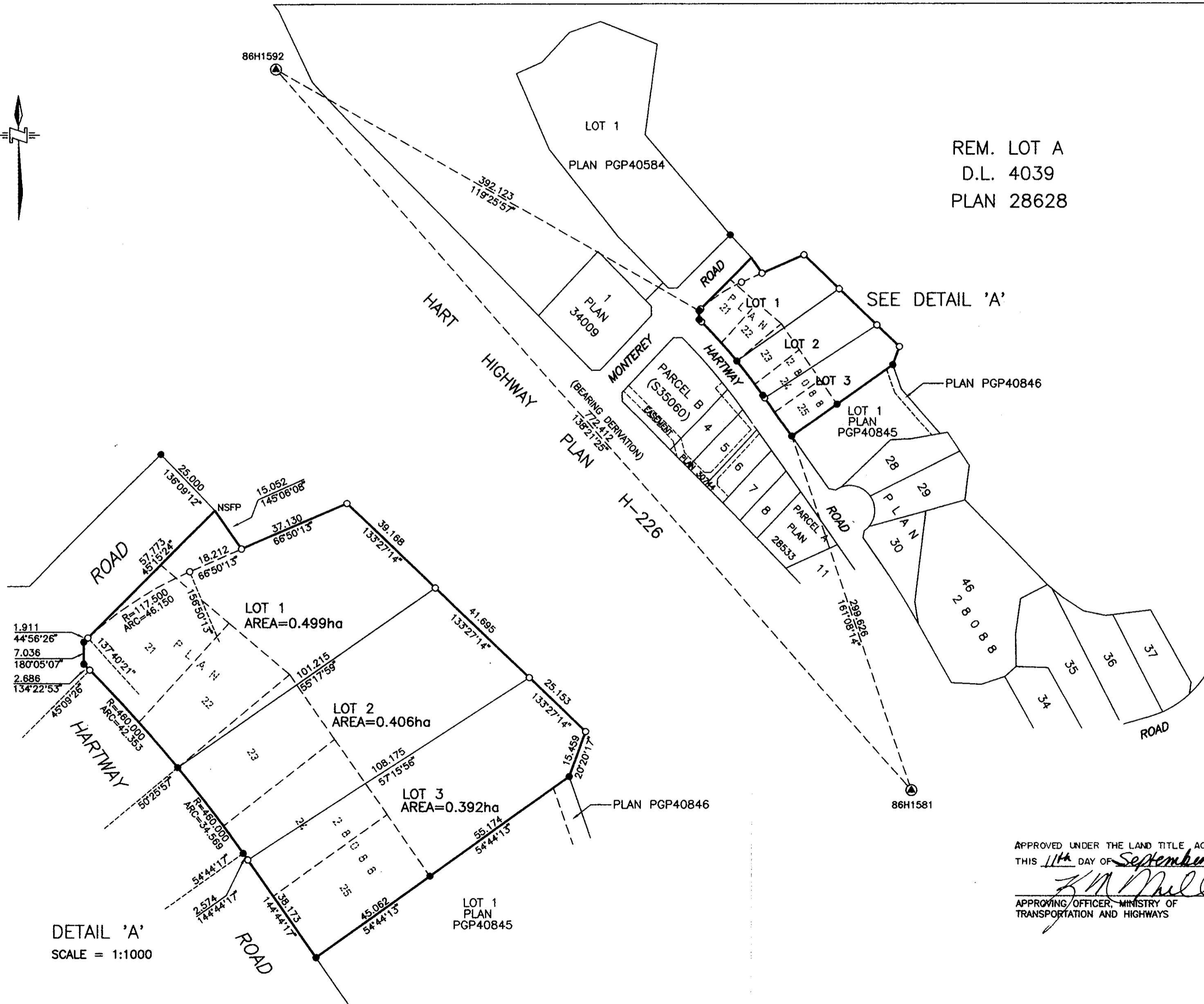


PLAN OF SUBDIVISION OF PART OF LOT A D.L. 4039 CARIBOO DISTRICT PLAN 28628 EXCEPT PLANS 34009, PGP40584, AND PGP40845, AND OF LOTS 21, 22, 23, 24, AND 25 D.L. 4039 CARIBOO DISTRICT PLAN 28088

(B.C.G.S. 93G.097.3)



S.W. 1/4 D.L. 4028



DETAIL 'A'
SCALE = 1:1000

REM. LOT A
D.L. 4039
PLAN 28628

PLAN PGP41652

DEPOSITED IN THE LAND TITLE OFFICE AT PRINCE GEORGE, B.C.

THIS 22 DAY OF September, 19 97.

REGISTRAR SK

LEGEND

BEARINGS ARE ASTRONOMIC, DERIVED FROM OBSERVATIONS BETWEEN CONTROL MONUMENTS 86H1592 AND 86H1581, INTEGRATED SURVEY AREA No. 39.
UTM FACTOR = 0.999 602 8.
SEA LEVEL REDUCTION FACTOR = 0.999 890 9.

FOUND PLACED

- CONTROL MONUMENT
- STANDARD IRON POST

NSFP NOT SUITABLE FOR POSTING

ALL DISTANCES ARE IN METRES AND DECIMALS THEREOF.

THIS PLAN SHOWS GROUND-LEVEL MEASURED DISTANCES. PRIOR TO COMPUTATION OF UTM COORDINATES, MULTIPLY BY COMBINED FACTOR OF 0.999 493 7.

I, G.R. PFRIMMER, A BRITISH COLUMBIA LAND SURVEYOR OF THE CITY OF PRINCE GEORGE, IN BRITISH COLUMBIA, CERTIFY THAT I WAS PRESENT AT AND PERSONALLY SUPERINTENDED THE SURVEY REPRESENTED BY THIS PLAN, AND THAT THE SURVEY AND PLAN ARE CORRECT. THE SURVEY WAS COMPLETED ON THE 3rd DAY OF APRIL, 1997.

G.R. Primmer
GORDON R. PFRIMMER B.C.L.S.

APPROVED UNDER THE LAND TITLE ACT
THIS 19th DAY OF September, 1997

A. G. G. G.
APPROVING OFFICER FOR THE CITY OF PRINCE GEORGE

OWNER Shalle Louis MATE
AUTHORIZED SIGNATORY FOR
COMET INVESTMENTS LTD.
(INC.#69349)

WITNESS: [Signature]
ADDRESS: 813 Victoria St. Prince Geo. B.C.

OCCUPATION: Sec.

OWNER Shalle Louis Joseph MATE
AUTHORIZED SIGNATORY FOR
P.G. REALTY & INSURANCE AGENCY LTD.
(INC.#63919)

WITNESS: [Signature]
ADDRESS: 813 Victoria St. Prince Geo. B.C.

OCCUPATION: Sec.

APPROVED UNDER THE LAND TITLE ACT
THIS 11th DAY OF September, 1997

[Signature]
APPROVING OFFICER, MINISTRY OF
TRANSPORTATION AND HIGHWAYS