

EXPLANATORY PLAN
 TO ACCOMPANY BYLAW
 NO. 6729, CLOSING LANE
 IN PLAN 21188,
 DISTRICT LOT 2100,
 CARIBOO DISTRICT.
 B.C.G.S. 93G.096

PLAN NO. PGP 41256

Deposited in the Land Title Office at Prince
 George this 6 day of June 1997

'B.B'

REGISTRAR

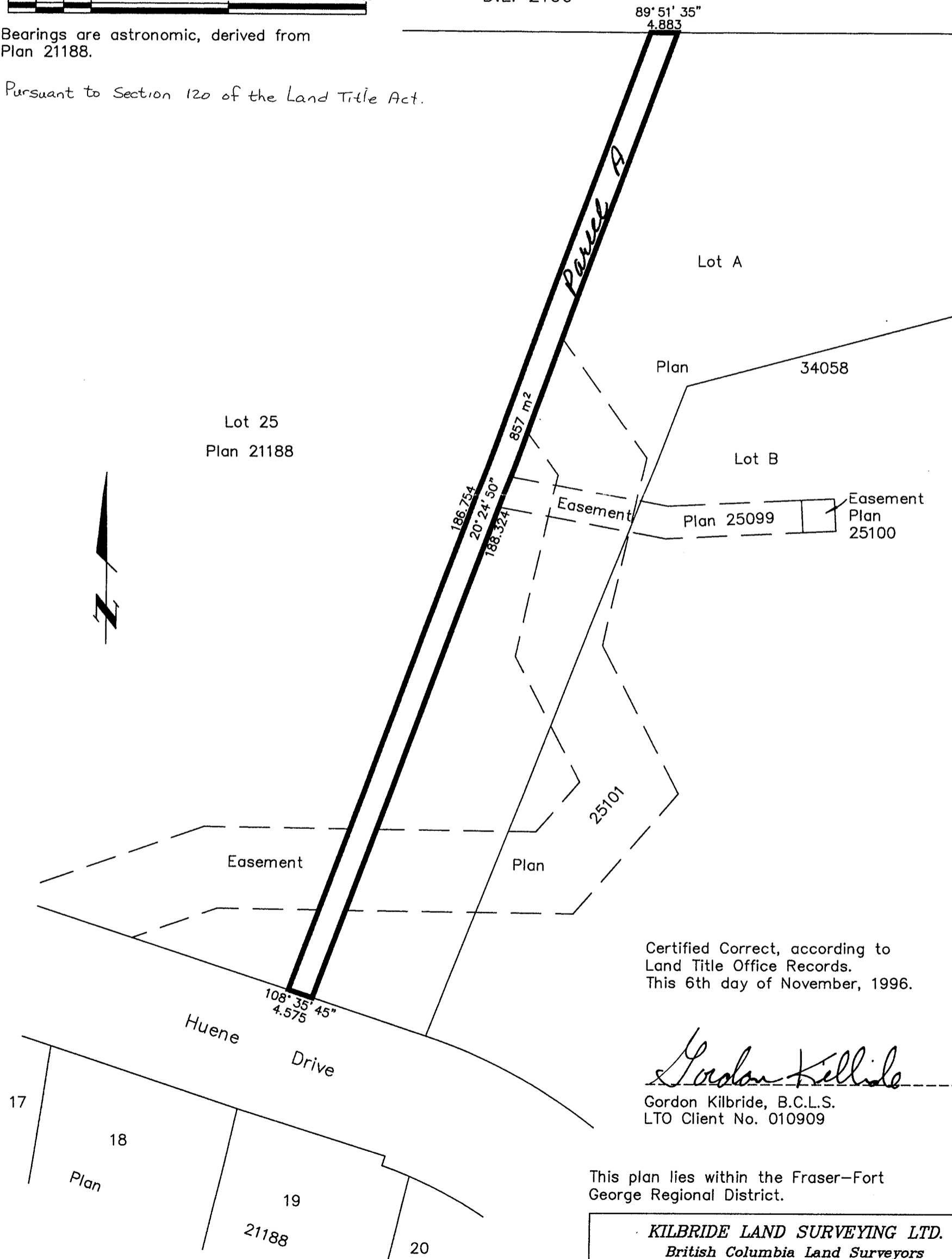
Scale: 1 : 750 (Distances are in metres)



Bearings are astronomic, derived from
 Plan 21188.

Pursuant to Section 120 of the Land Title Act.

S.W. 1/4
 D.L. 2100



Certified Correct, according to
 Land Title Office Records.
 This 6th day of November, 1996.

Gordon Kilbride
 Gordon Kilbride, B.C.L.S.
 LTO Client No. 010909

This plan lies within the Fraser-Fort
 George Regional District.

KILBRIDE LAND SURVEYING LTD. British Columbia Land Surveyors Prince George, B.C. Ph: (250) 562-1196 Fax: 562-3656		
F.B.-	D.L.- 2100	File No. -960845