

PLAN OF STATUTORY
RIGHT OF WAY ON
THE REMAINDER OF
LOT 1, PLAN 17575,
DISTRICT LOT 2508,
CARIBOO DISTRICT.

PLAN NO. PGP 41082

Deposited in the Land Title Office at Prince
George this 24 day of April, 1997.

B.B.
REGISTRAR

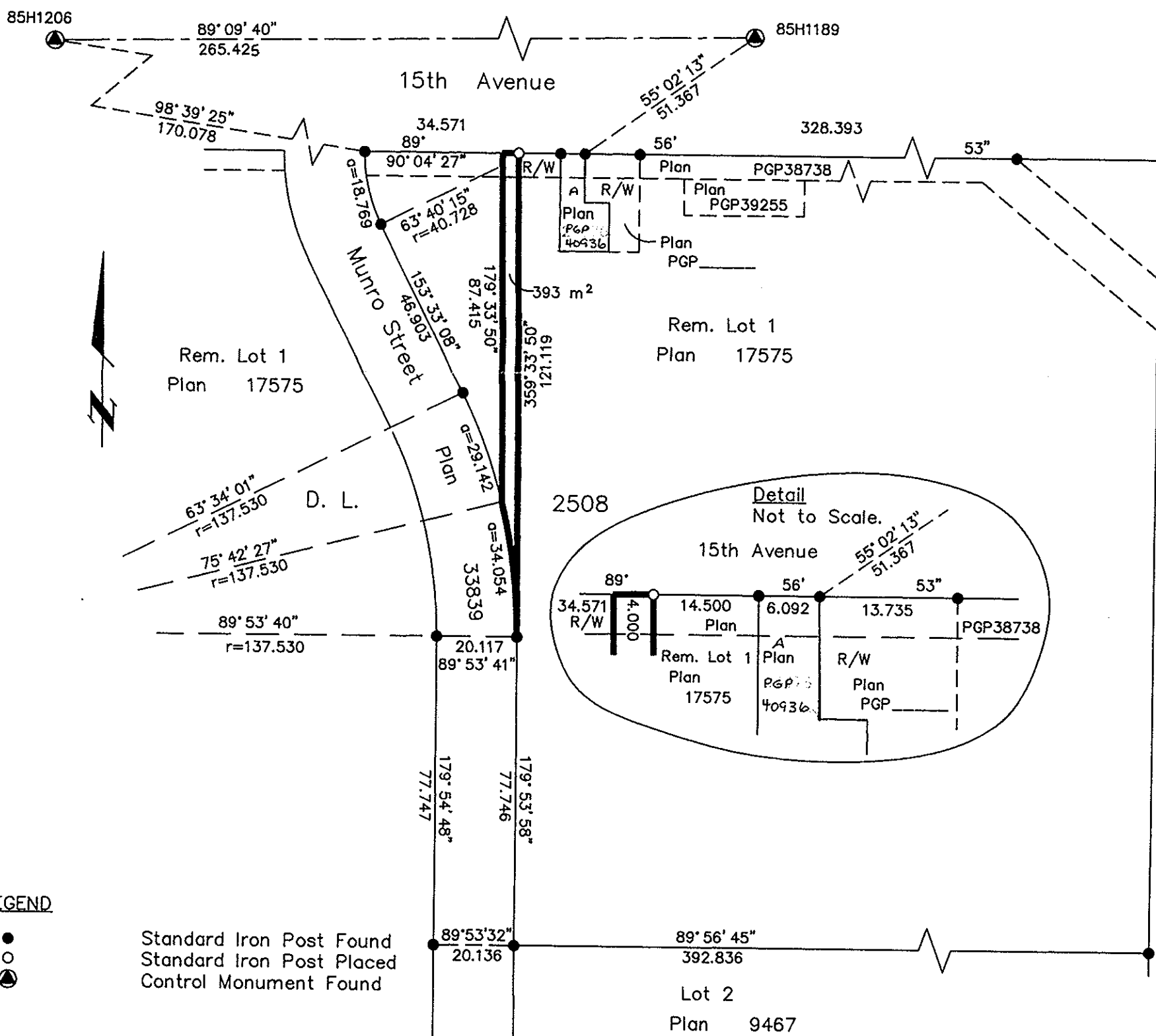
B.C.G.S. 93G.096

Scale: 1 : 1250 (Distances are in metres)



Grid bearings are derived from observations between
control monuments 85H1189 and 85H1206, integrated
survey area number 39, City of Prince George, B.C.

Note: This plan shows ground level measured
distances. Prior to computation of U.T.M.
co-ordinates multiply by the combined
factor 0.999507535



LEGEND

- Standard Iron Post Found
- Standard Iron Post Placed
- ⊙ Control Monument Found

I, Gordon Kilbride, a British Columbia Land Surveyor of
Prince George in British Columbia, certify that I was
present at and personally superintended the survey
represented by this plan and that the survey and plan
are correct. The survey was completed on the 17th day
of March, 1997.

Gordon Kilbride
Gordon Kilbride, B.C.L.S.
LTO Client No. 010909

This plan lies within the Fraser-Fort
George Regional District.

KILBRIDE LAND SURVEYING LTD. British Columbia Land Surveyors Prince George, B.C. Ph: (250) 562-1196 Fax: 562-3656		
F.B.- RA	D.L.- 2508	FILE No. 970099