

PLAN OF STATUTORY  
RIGHT OF WAY ON  
THE REMAINDER OF  
LOT 1, PLAN 17575,  
DISTRICT LOT 2508,  
CARIBOO DISTRICT.  
B.C.G.S. 93G.096

PLAN NO. PGP 41081

Deposited in the Land Title Office at Prince  
George this 24 day of April 1997.

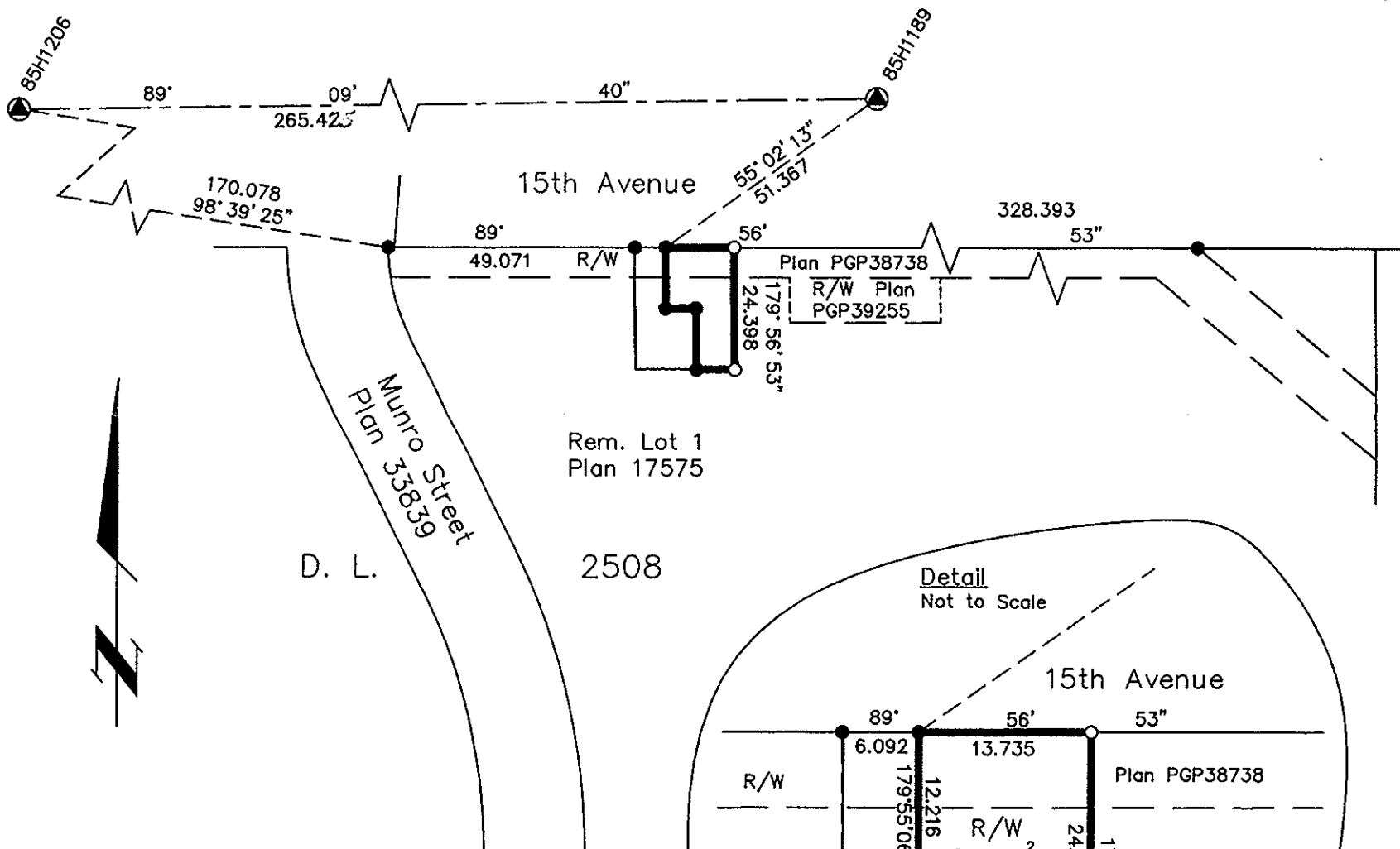
B.B.  
REGISTRAR

Scale: 1 : 1250 (Distances are in metres)



Grid bearings are derived from observations between  
control monuments 85H1189 and 85H1206, integrated  
survey area number 39, City of Prince George, B.C.

Note: This plan shows ground level measured  
distances. Prior to computation of U.T.M.  
co-ordinates multiply by the combined  
factor 0.999507535



**LEGEND**

- Standard Iron Post Found
- Standard Iron Post Placed
- ⊙ Control Monument Found

I, Gordon Kilbride, a British Columbia Land Surveyor of  
Prince George in British Columbia, certify that I was  
present at and personally superintended the survey  
represented by this plan and that the survey and plan  
are correct. The survey was completed on the 5th day  
of March, 1997.

*Gordon Kilbride*

Gordon Kilbride, B.C.L.S.  
LTO Client No. 010909

This plan lies within the Fraser-Fort  
George Regional District.

**KILBRIDE LAND SURVEYING LTD.**  
British Columbia Land Surveyors  
Prince George, B.C.  
Ph: (250) 562-1196 Fax: 562-3656

F.B.- RA      D.L.- 2508      FILE No. 970099-1