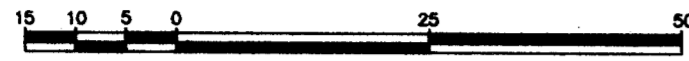


REFERENCE PLAN OF CONSOLIDATION OF
 LOTS A AND B, PLAN 19516 AND CLOSED
 ROAD PLAN PGP 39606, DISTRICT LOT 2610,
 CARIBOO DISTRICT. Pursuant to Section 100(1)(b) of the Land Title Act.
 B.C.G.S. 93G.096

PLAN NO. PGP 40866

Deposited in the Land Title Office at Prince
 George this 30 day of Jan 1997

Scale: 1 : 750 (Distances are in metres)



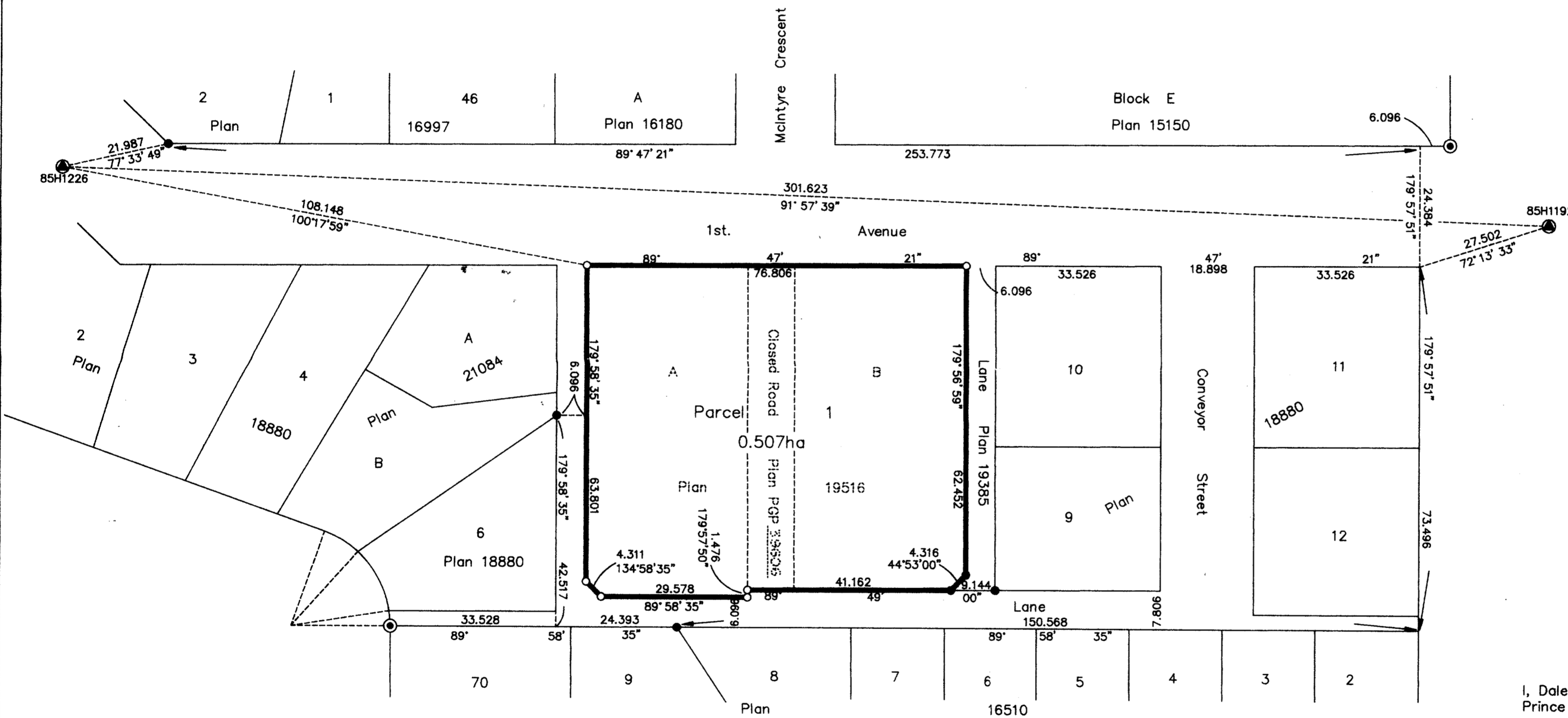
Grid bearings are derived from observations between
 control monuments 86H1226 and 85H1192, integrated
 survey area number 39, City of Prince George, B.C.

Note: This plan shows ground level measured
 distances. Prior to computation of U.T.M.
 co-ordinates multiply by the combined
 factor 0.99950756.

LEGEND

- ⊙ Standard Concrete Post Found
- Standard Iron Post Found
- Standard Iron Post Placed
- ⊙ Control Monument

REGISTRAR *B.B.*



I, Dale L. Keown, a British Columbia Land Surveyor of
 Prince George in British Columbia, certify that I was
 present at and personally superintended the survey
 represented by this plan and that the survey and plan
 are correct. The survey was completed on the 18th day
 of October, 1995.

Dale Keown
 Dale L. Keown, B.C.L.S.

This plan lies within the Fraser-Fort
 George Regional District.

KILBRIDE LAND SURVEYING LTD. British Columbia Land Surveyors Prince George, B.C. Ph: (604) 562-1196 Fax: 562-3656		
F.B.- RA	D.L.- 2610	REF. NO.- 940243S