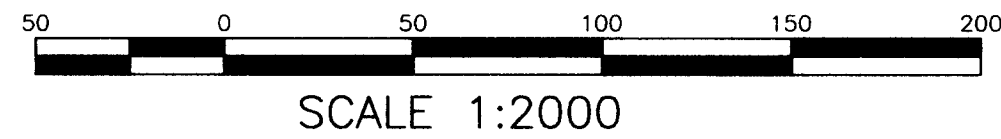


PLAN OF SUBDIVISION OF PART REMAINDER OF OF LOT A
 DISTRICT LOT 4039 CARIBOO DISTRICT PLAN 28628
 EXCEPT PLAN 34009 AND LOTS 26 AND 27, DISTRICT LOT 4039
 CARIBOO DISTRICT, PLAN 28088

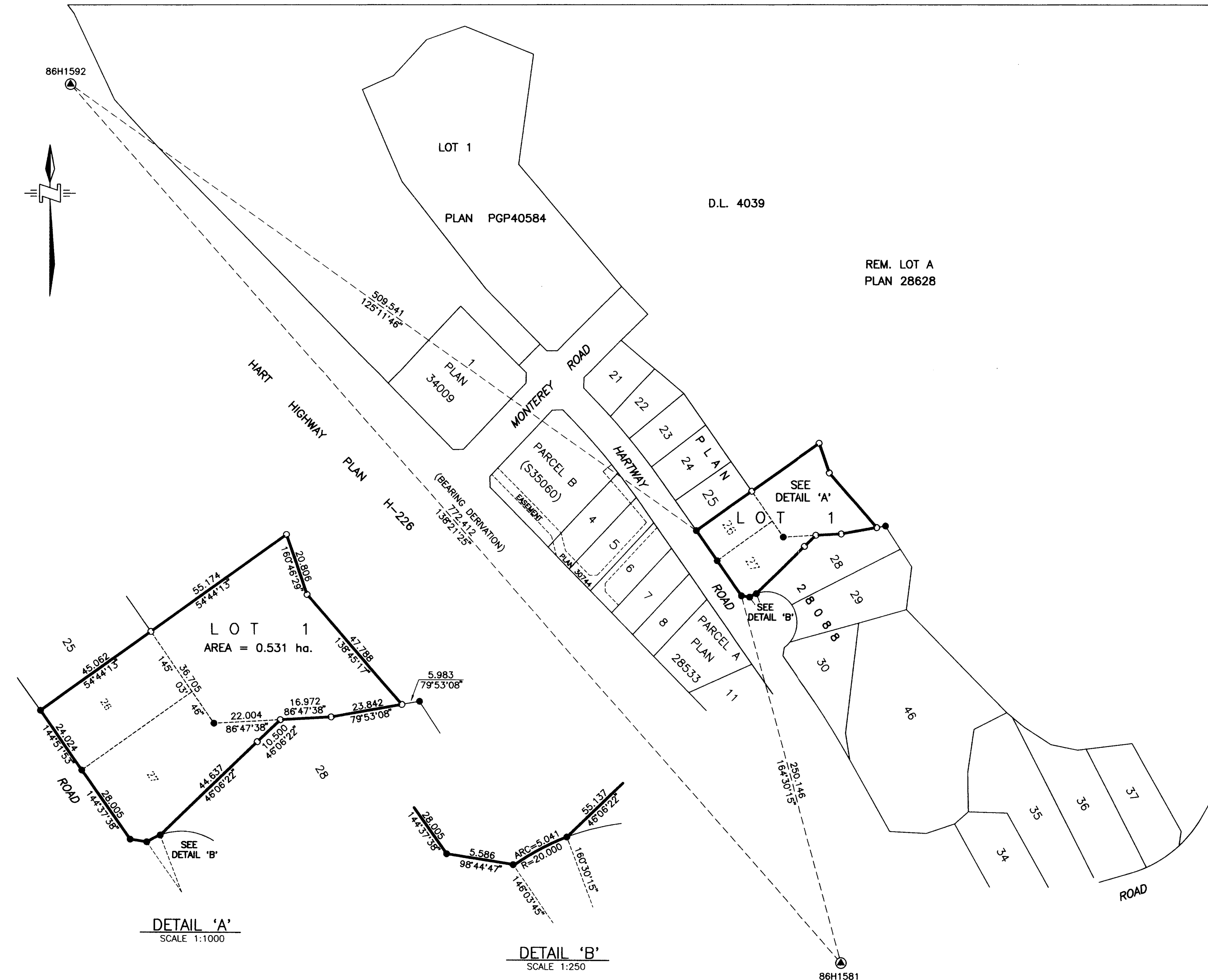
(B.C.G.S. 93G.097.3)



S.W. 1/4 D.L. 4028

D.L. 4039

REM. LOT A
 PLAN 28628



PLAN PGP40845

DEPOSITED IN THE LAND TITLE OFFICE AT PRINCE GEORGE, B.C.

THIS 23 DAY OF Jan., 1997.

'BB'
 REGISTRAR PL 4175

LEGEND

BEARINGS ARE ASTRONOMIC, DERIVED FROM OBSERVATIONS BETWEEN CONTROL MONUMENTS 86H1592 AND 86H1581, INTEGRATED SURVEY AREA No. 39.
 UTM FACTOR = 0.999 602 8.
 SEA LEVEL REDUCTION FACTOR = 0.999 890 9.

FOUND PLACED

- CONTROL MONUMENT
- STANDARD IRON POST

ALL DISTANCES ARE IN METRES AND DECIMALS THEREOF.

THIS PLAN SHOWS GROUND-LEVEL MEASURED DISTANCES. PRIOR TO COMPUTATION OF UTM COORDINATES, MULTIPLY BY COMBINED FACTOR OF 0.999 493 7.

I, G.R. PFRIMMER, A BRITISH COLUMBIA LAND SURVEYOR OF THE CITY OF PRINCE GEORGE, IN BRITISH COLUMBIA, CERTIFY THAT I WAS PRESENT AT AND PERSONALLY SUPERINTENDED THE SURVEY REPRESENTED BY THIS PLAN, AND THAT THE SURVEY AND PLAN ARE CORRECT. THE SURVEY WAS COMPLETED ON THE 28 DAY OF OCTOBER, 1996.

G. Primmer
 GORDON R. PFRIMMER B.C.L.S.

OWNER Matto
 AUTHORIZED SIGNATORY FOR
 COMET INVESTMENTS LTD.
 (INC. #69349)
 WITNESS: Bill Cheung
 WILLIAM CHEUNG, P.ENG
 ADDRESS: 2134 RUSH PLACE, PRINCE GEORGE
 OCCUPATION: ENGINEER

OWNER Matto
 AUTHORIZED SIGNATORY FOR
 P.G. REALTY AND INSURANCE AGENCY LTD.
 (INC. #63919)
 WITNESS: Bill Cheung
 WILLIAM CHEUNG, P.ENG
 ADDRESS: 2134 RUSH PLACE, PRINCE GEORGE
 OCCUPATION: ENGINEER

APPROVED UNDER THE LAND TITLE ACT
 THIS 16th DAY OF January 1997
Ed Hart
 APPROVING OFFICER FOR THE CITY OF PRINCE GEORGE

APPROVED UNDER THE LAND TITLE ACT
 THIS 09 DAY OF January 1997
[Signature]
 APPROVING OFFICER FOR THE MINISTRY OF
 TRANSPORTATION AND HIGHWAYS