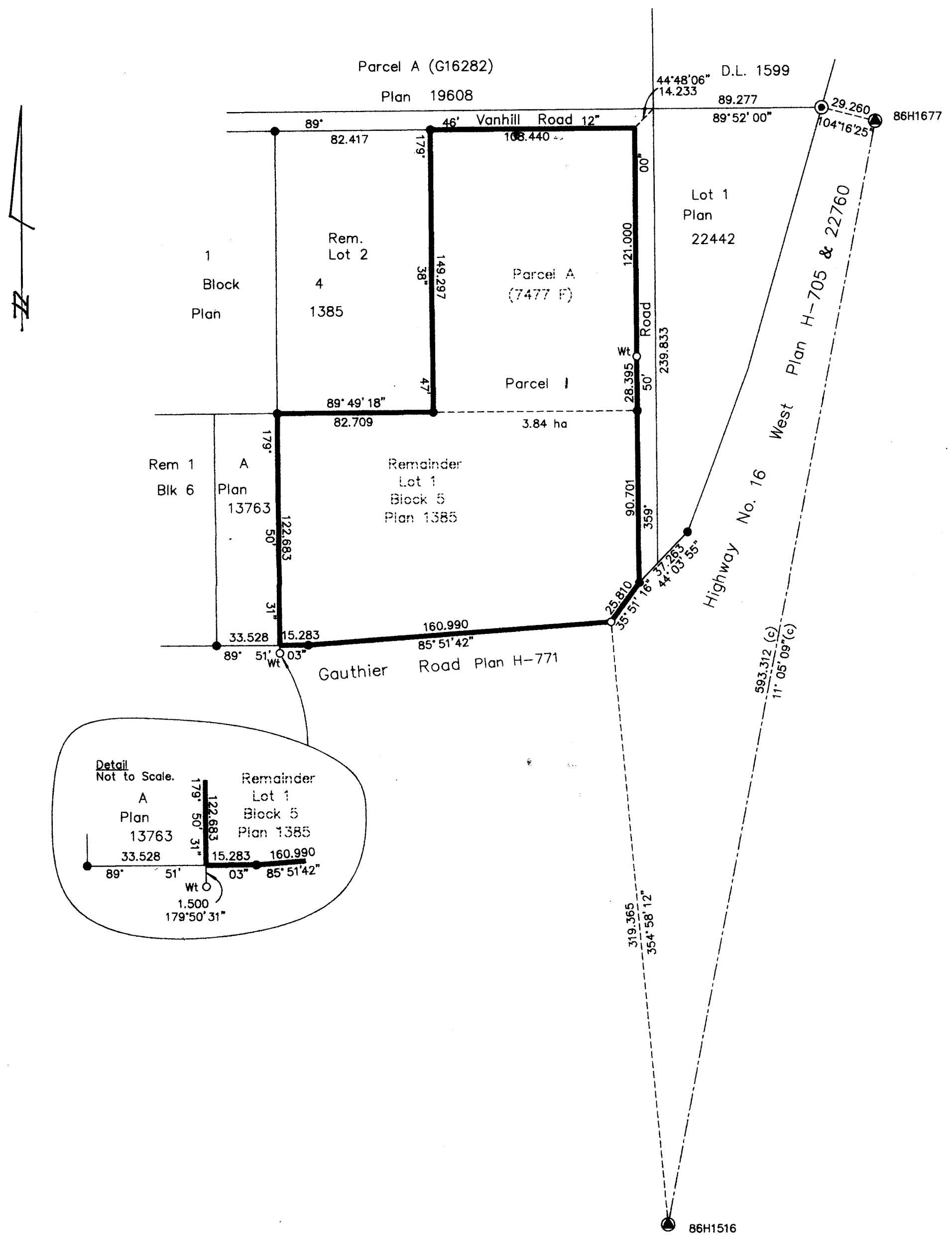


REGISTRAR



REFERENCE PLAN OF CONSOLIDATION OF
REMAINDER LOT 1, BLOCK 5, PLAN 1385 AND
PARCEL A (7477 F) OF LOT 2, BLOCK 4,
PLAN 1385, DISTRICT LOT 1592,
CARIBOO DISTRICT.

Pursuant to Section 100 of the Land Title Act.
B.C.G.S. 93G.086

Scale: 1 : 2000 (Distances are in metres)

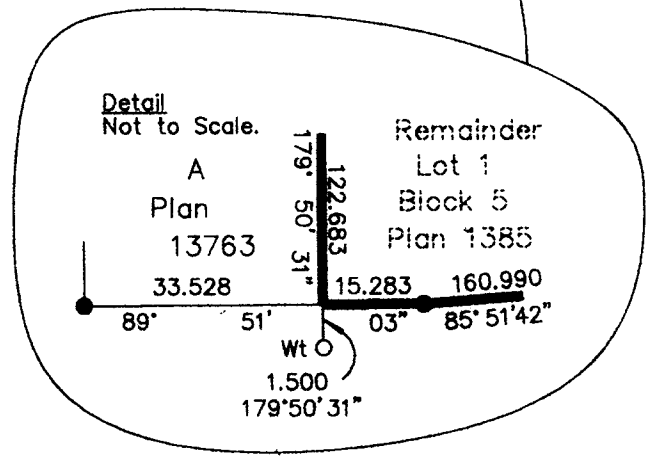


LEGEND

- Standard Concrete Post Found
- Standard Iron Post Found
- Standard Iron Post Placed
- Control Monument Found

Grid bearings are derived from observations between control monuments 86H1516 and 86H1677, integrated survey area number 39, City of Prince George, B.C.

Note: This plan shows ground level measured distances. Prior to computation of U.T.M. co-ordinates multiply by the combined factor 0.99948610



I, Dale L. Keown, a British Columbia Land Surveyor of Prince George in British Columbia, certify that I was present at and personally superintended the survey represented by this plan and that the survey and plan are correct. The survey was completed on the 13th day of September, 1996.

Dale Keown
 Dale L. Keown, B.C.L.S.
 LTO Client No. 010908

This plan lies within the Fraser-Fort George Regional District.

KILBRIDE LAND SURVEYING LTD. British Columbia Land Surveyors Prince George, B.C.		
Ph: (604) 562-1196 Fax: 562-3656		
F.B.- RA	D.L.- 1592	File No. - 960688