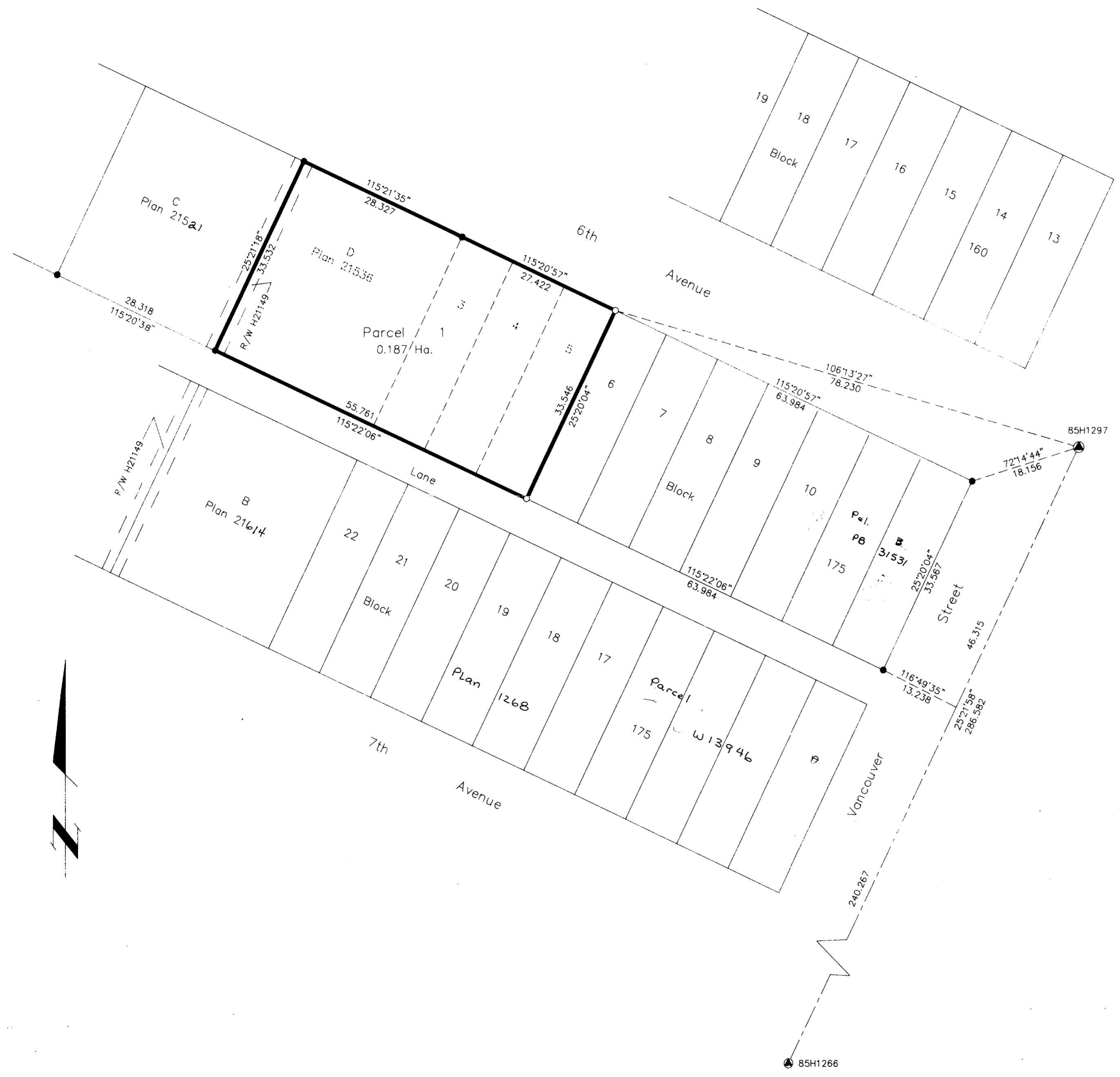


PLAN NO. PGP 40835

Deposited in the Land Title Office at Prince George this 21 day of Jan 1997

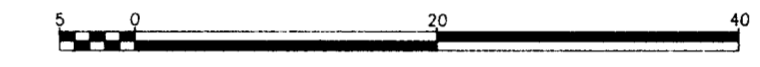
REGISTRAR *bb*



REFERENCE PLAN OF
 CONSOLIDATION OF LOT D,
 PLAN 21536 AND LOTS 3,
 4 AND 5, BLOCK 175,
 PLAN 1268, D.L. 343,
 CARIBOO DISTRICT.

B.C.G.S. 93G.097

Scale: 1 : 500 (Distances are in metres)



Note: This plan shows ground level measured distances. Prior to computation of U.T.M. co-ordinates multiply by the combined factor 0.9995105393

Grid bearings are derived from observations between control monuments 85H1297 and 85H1266, integrated survey area number 39, City of Prince George, B.C.

- Legend**
- Standard Iron Post Found
 - Standard Iron Post Placed
 - ⊙ Control Monument

I, Gordon Kilbride, a British Columbia Land Surveyor of Prince George in British Columbia, certify that I was present at and personally supervised the survey represented by this plan and that the survey and plan are correct. The survey was completed on the 10th day of February, 1992.

Gordon Kilbride
 Gordon Kilbride, B.C.L.S.

This plan lies within the Fraser-Fort George Regional District.

KILBRIDE SURVEYS		
British Columbia Land Surveyors		
Prince George, B.C.		
Ph: (604) 562-1196 Fax: 562-3656		
F.B.- TF 17	D.L.- 343 Bk.175	REF. NO.- 92099a