

PLAN OF SUBDIVISION OF PART OF
LOT 13, PLAN 13460
DISTRICT LOT 4046
CARIBOO DISTRICT

B.C.G.S. 93G.097



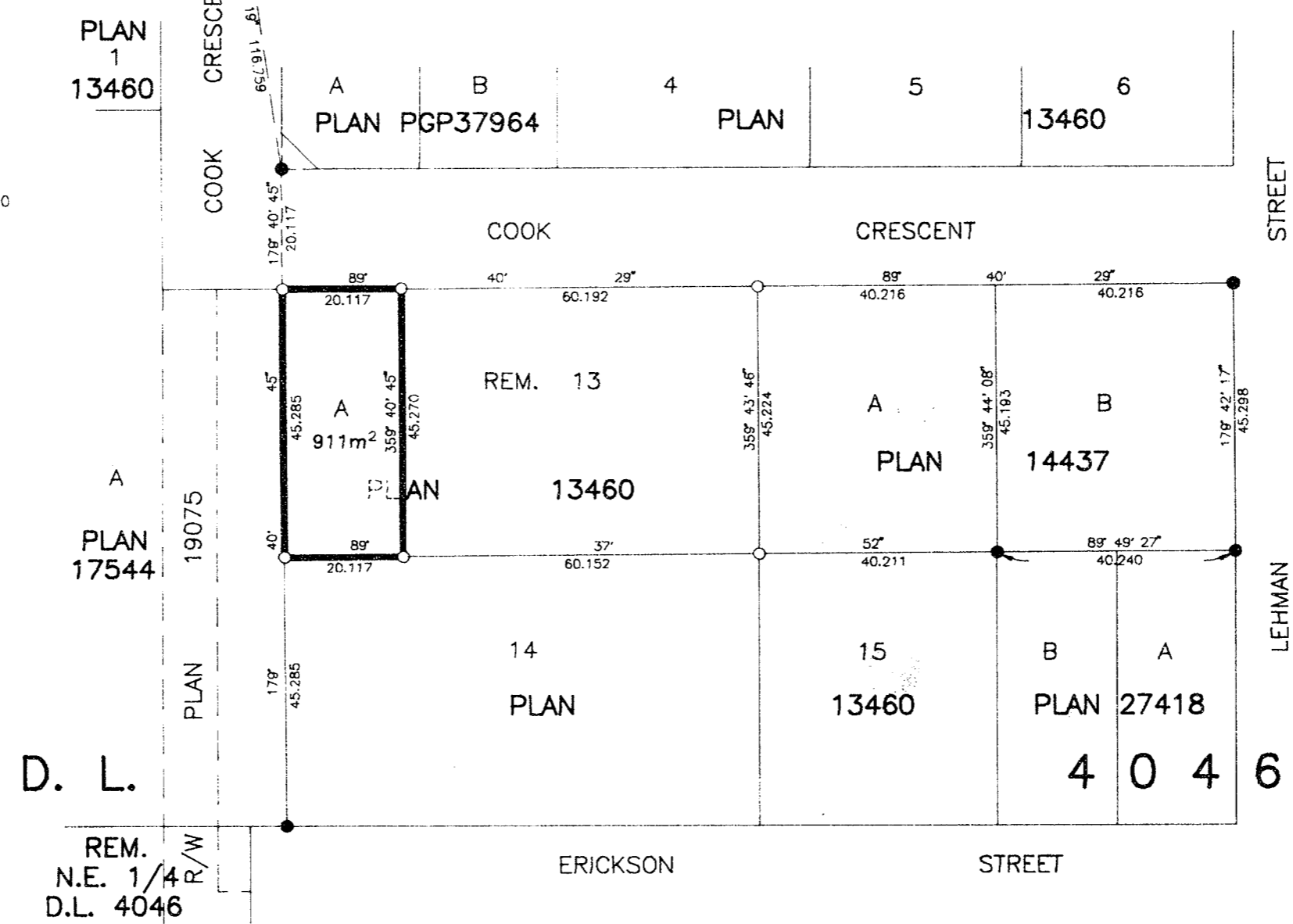
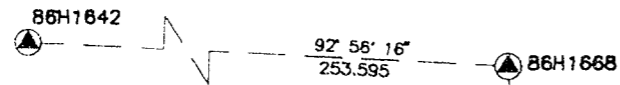
SCALE = 1 : 1000
ALL DISTANCES ARE SHOWN IN METRES.

THIS PLAN SHOWS GROUND-LEVEL MEASURED DISTANCES.
PRIOR TO COMPUTATION OF U.T.M. COORDINATES, MULTIPLY
BY COMBINED FACTOR 0.99949226.

GRID BEARINGS ARE DERIVED FROM OBSERVATIONS
BETWEEN CONTROL MONUMENTS 86H1668, AND 86H1642,
INTEGRATED SURVEY AREA NUMBER 39, PRINCE GEORGE.

LEGEND

- STANDARD IRON POST FOUND
- STANDARD IRON POST PLACED
- ▲ CONTROL MONUMENT



PLAN No. PGP 40779

DEPOSITED IN THE LAND TITLE OFFICE
AT PRINCE GEORGE, B.C., THIS 20th
DAY OF DEC., 19 96

REGISTRAR

Alan Dale Florell
OWNER: ALAN DALE FLORELL

Irene Florell
OWNER: IRENE FLORELL

Teresa Pfliger
WITNESS (AS TO BOTH SIGNATURES)

TERESA PFLIGER
PRINT NAME

2876 Range Road
ADDRESS

Pr. Geo. Bc. V2M1N2

LEGAL SECRETARY
OCCUPATION

I, RONALD L. JOHNS, A BRITISH COLUMBIA LAND SURVEYOR, OF PRINCE GEORGE, IN BRITISH COLUMBIA, CERTIFY THAT I WAS PRESENT AT AND PERSONALLY SUPERINTENDED THE SURVEY REPRESENTED BY THIS PLAN AND THAT THE SURVEY AND PLAN ARE CORRECT. THE SURVEY WAS COMPLETED ON THE 24TH DAY OF JUNE, 1996.

R.L. Johns
R.L. JOHNS, B.C.L.S., C.L.S.

APPROVED UNDER THE LAND TITLE ACT
THIS 20th DAY OF December 19 96

Ed Charte
APPROVING OFFICER, CITY OF PRINCE GEORGE.

THIS PLAN LIES WITHIN THE FRASER-FORT GEORGE REGIONAL DISTRICT.

R. L. JOHNS LAND SURVEYING LTD.
LEGAL AND ENGINEERING SURVEYS
240 VICTORIA STREET
PRINCE GEORGE, B. C. V2L 2J4
PHONE: (604)562-5759
FAX: (604)562-5703