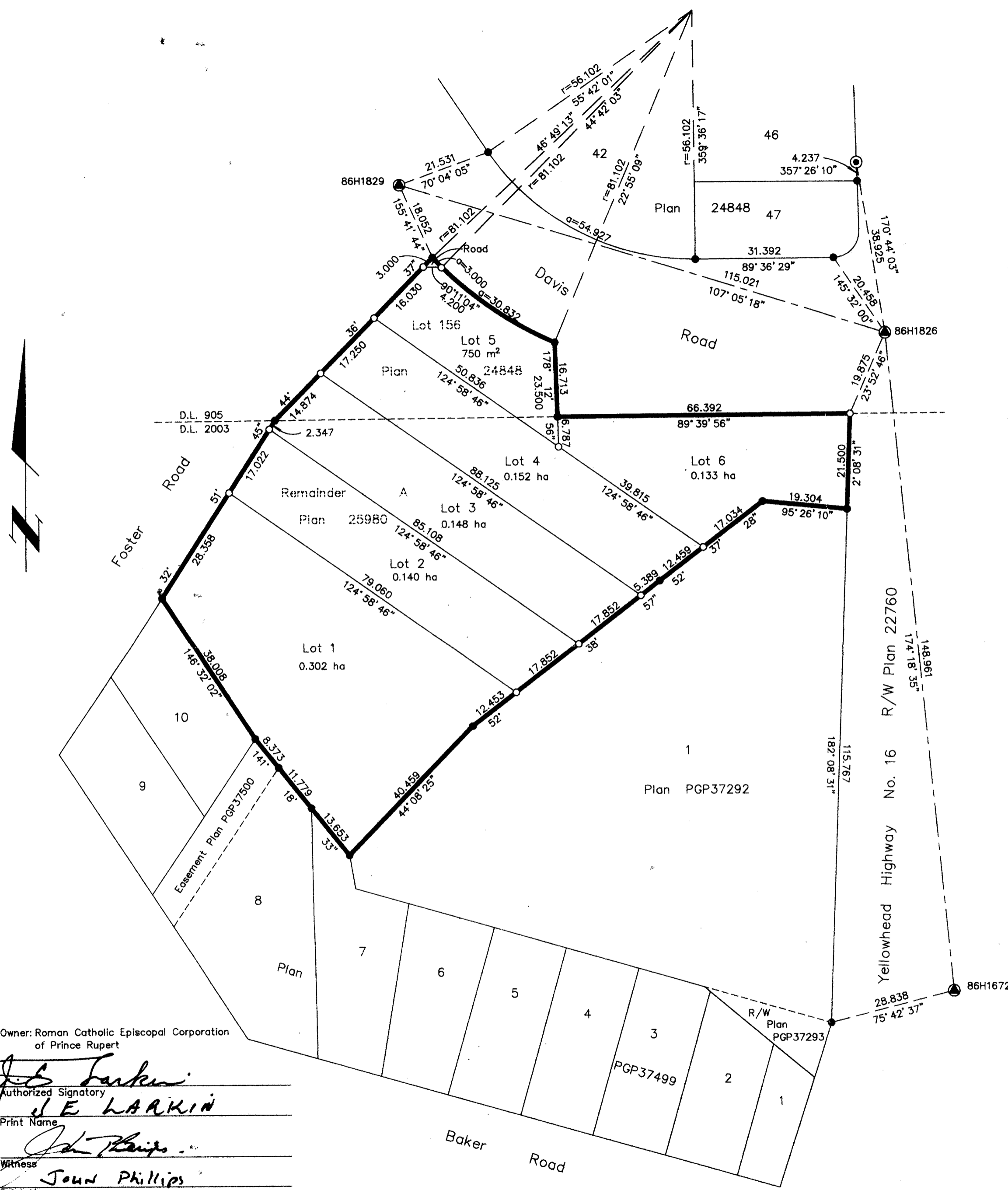


PLAN NO. PGP 40720

Deposited in the Land Title Office at Prince George this 25 day of NOV 1996

REGISTRAR *BB*



PLAN OF SUBDIVISION OF LOT 156, PLAN 24848, DISTRICT LOT 905, AND THE REMAINDER OF LOT A, PLAN 25980, DISTRICT LOT 2003, CARIBOO DISTRICT. B.C.G.S. 93G.087

Scale: 1 : 750 (Distances are in metres)

Grid bearings are derived from observations between control monuments 86H1826 and 86H1829, integrated survey area number 39, City of Prince George, B.C.

Note: This plan shows ground level measured distances. Prior to computation of U.T.M. co-ordinates multiply by the combined factor 0.99950229

- LEGEND**
- Standard Concrete Post Found
  - Standard Iron Post Found
  - Standard Iron Post Placed
  - Control Monument Found

I, Gordon Kilbride, a British Columbia Land Surveyor of Prince George in British Columbia, certify that I was present at and personally superintended the survey represented by this plan and that the survey and plan are correct. The survey was completed on the 8th day of October, 1996.

*Gordon Kilbride*  
 Gordon Kilbride, B.C.L.S.  
 LTO Client No. 010909

Owner: Roman Catholic Episcopal Corporation of Prince Rupert

*J.E. Larkin*  
 Authorized Signatory  
 J.E. LARKIN  
 Print Name

*John Phillips*  
 Witness  
 JOHN PHILLIPS  
 Print Name

Box 7000 PRINCE GEORGE  
 Address  
 B.C. V2N 3Z2 Postal Code

ACCOUNTANT  
 Occupation

Approved under the Land Title Act this 22 day of October, 1996

*[Signature]*  
 Approving Officer  
 Ministry of Transportation and Highways

Approved under the Land Title Act this 20 day of November, 1996

*[Signature]*  
 Approving Officer  
 City of Prince George

This plan lies within the Fraser-Fort George Regional District.

**KILBRIDE LAND SURVEYING LTD.**  
 British Columbia Land Surveyors  
 Prince George, B.C.  
 Ph: (604) 562-1196 Fax: 562-3656

F.B.- RA | D.L.- 2003 | FILE No. 950884