

PLAN NO. PGP 40699

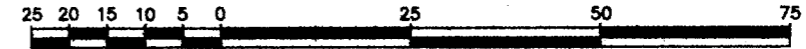
Deposited in the Land Title Office at Prince George this 20 day of Nov 1996

REGISTRAR *B.B.*

REFERENCE PLAN OF CONSOLIDATION OF LOT 18, PLAN 29700 AND CLOSED ROAD, PLAN PGP39050, DISTRICT LOT 745, CARIBOO DISTRICT. Pursuant to Section 100(1)(b) of the Land Title Act.

B.C.G.S. 93G.087

Scale: 1 : 1000 (Distances are in metres)

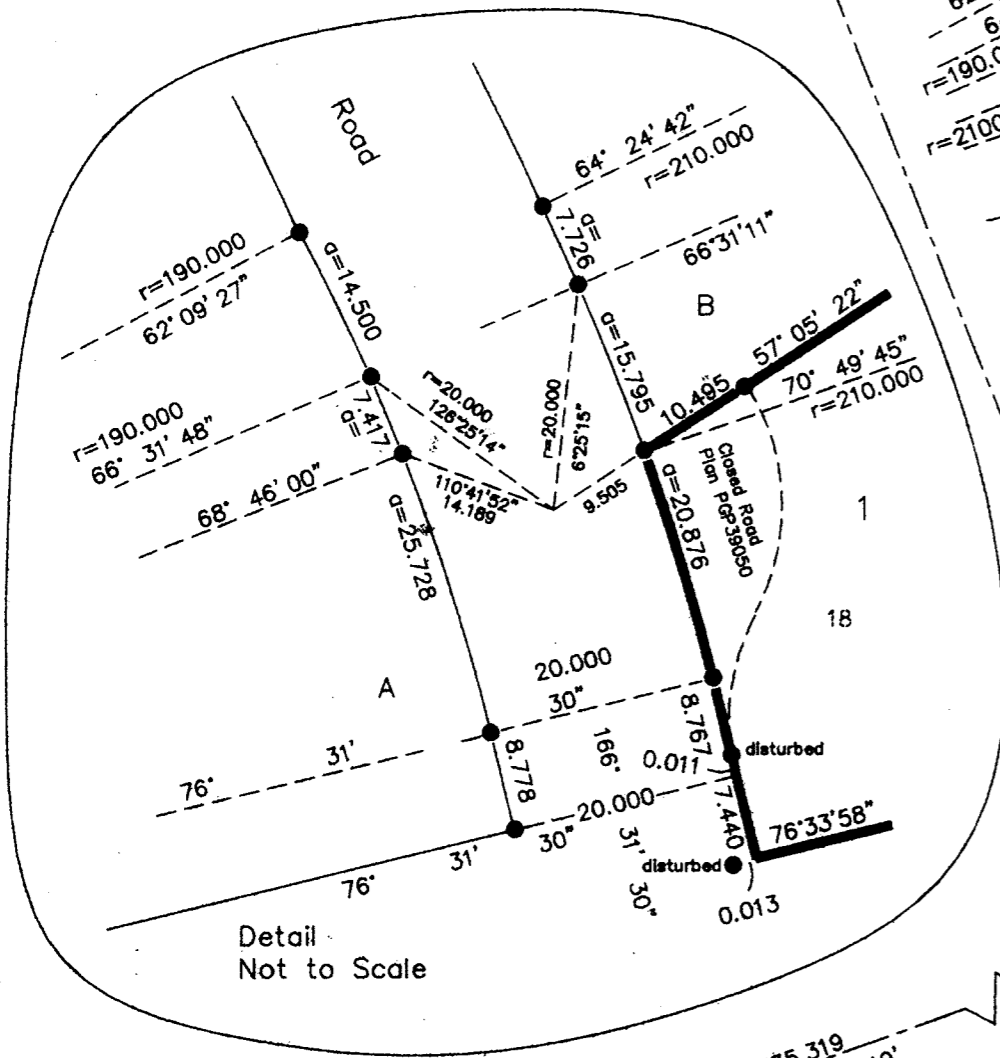
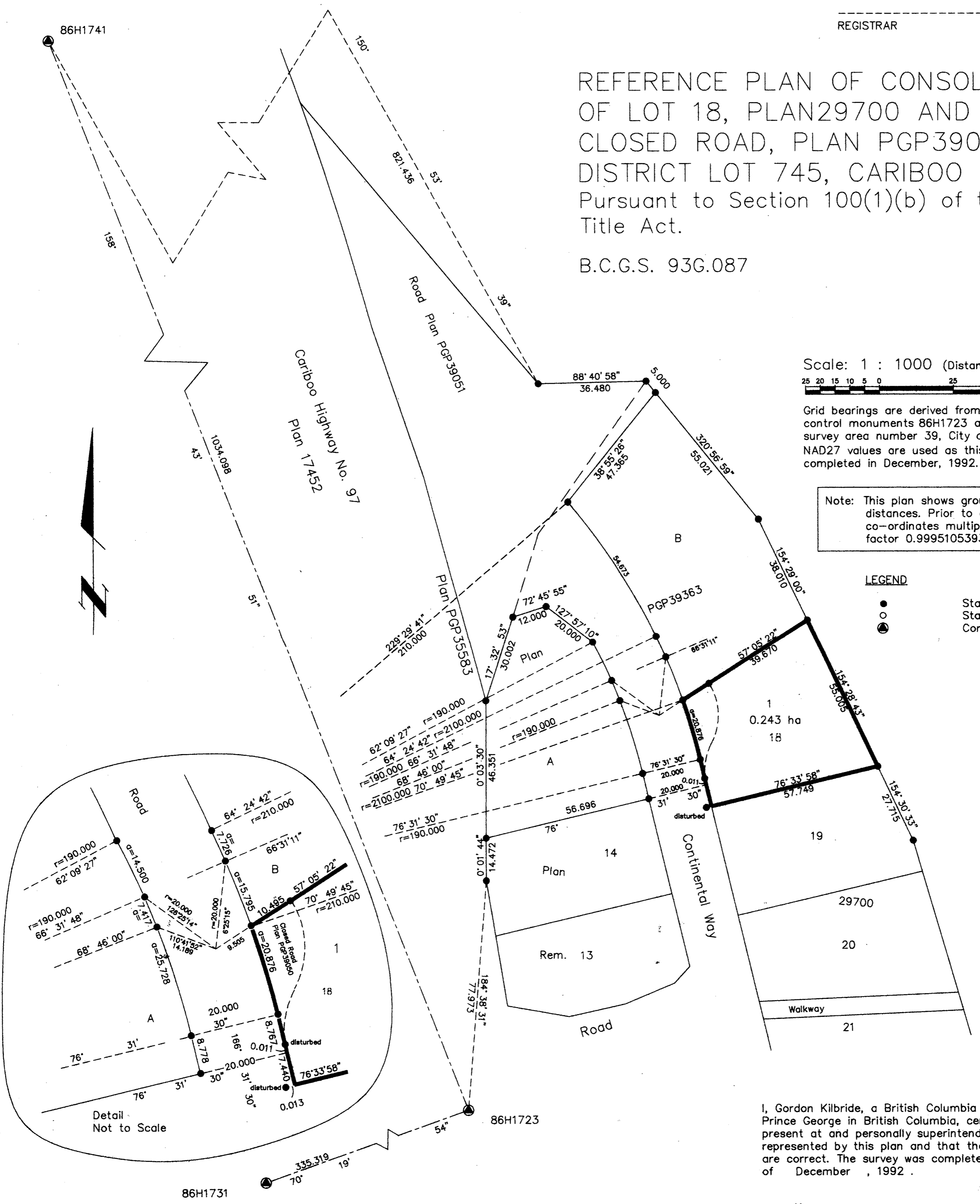


Grid bearings are derived from observations between control monuments 86H1723 and 86H1731, integrated survey area number 39, City of Prince George, B.C. NAD27 values are used as this survey was completed in December, 1992.

Note: This plan shows ground level measured distances. Prior to computation of U.T.M. co-ordinates multiply by the combined factor 0.9995105393

LEGEND

- Standard Iron Post Found
- Standard Iron Post Placed
- ⊙ Control Monument Found



I, Gordon Kilbride, a British Columbia Land Surveyor of Prince George in British Columbia, certify that I was present at and personally superintended the survey represented by this plan and that the survey and plan are correct. The survey was completed on the 9 day of December, 1992.

Gordon Kilbride
Gordon Kilbride, B.C.L.S.
LTO Client No. 010909

This plan lies within the Fraser Fort George Regional District.

KILBRIDE SURVEYS British Columbia Land Surveyors Prince George, B.C. Ph: (604) 562-1196 Fax: 562-3656		
F.B.- TT 28	D.L.- 745	FILE No.- 921081D