

PLAN OF SUBDIVISION
OF LOT 18 & REM. LOT 19, BLOCK 56, PLAN 696 &
PARCEL A, PLAN PGP 4 0 3 4 2 &
LOT 1, PLAN 10771
DISTRICT LOT 936
CARIBOO DISTRICT

PLAN No. PGP 40644

DEPOSITED IN THE LAND TITLE OFFICE
AT PRINCE GEORGE, B.C., THIS 8
DAY OF NOV 19 96

B.C.G.S. 93G.097

B.C.
REGISTRAR



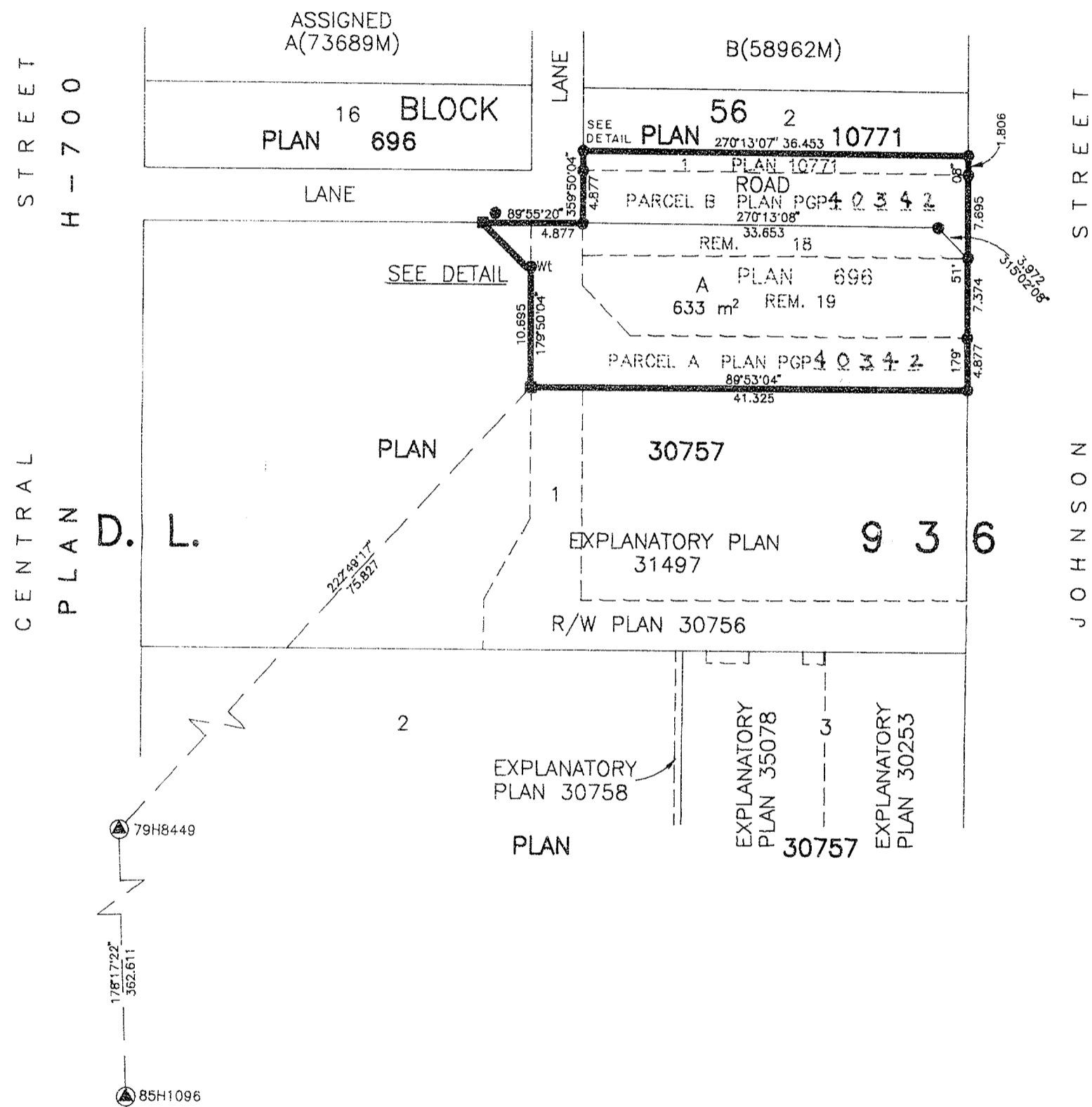
SCALE = 1 : 500
ALL DISTANCES ARE SHOWN IN METRES.

THIS PLAN SHOWS GROUND-LEVEL MEASURED DISTANCES.
PRIOR TO COMPUTATION OF U.T.M. COORDINATES, MULTIPLY
BY COMBINED FACTOR 0.99950855.

GRID BEARINGS ARE DERIVED FROM OBSERVATIONS
BETWEEN CONTROL MONUMENTS 79H8449, AND 85H1096.
INTEGRATED SURVEY AREA NUMBER 39, PRINCE GEORGE.

LEGEND

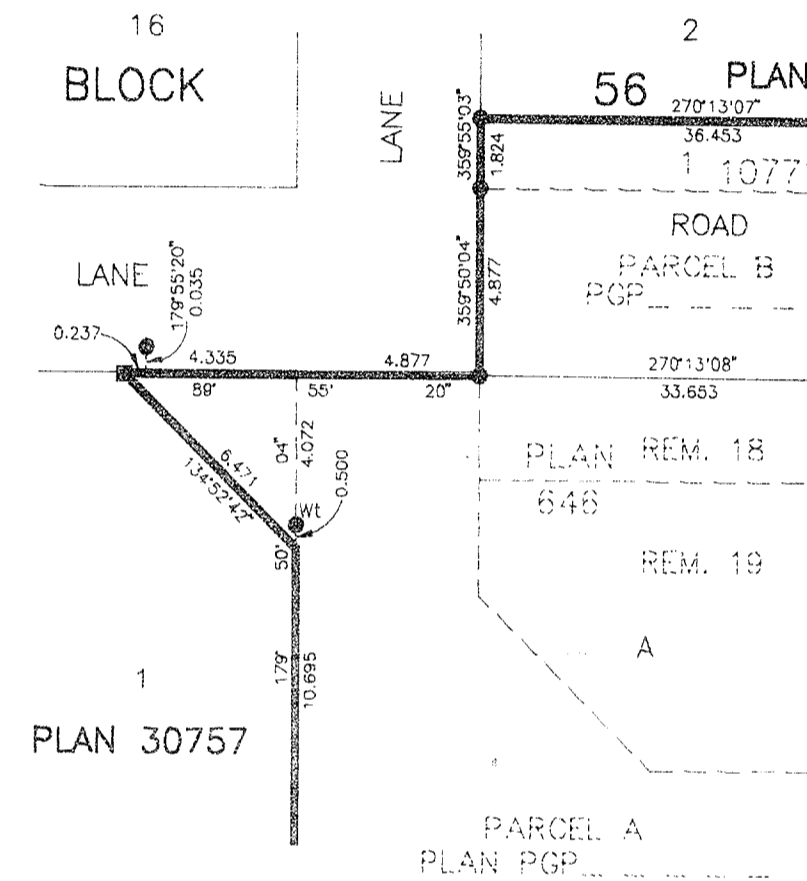
- STANDARD IRON POST FOUND
- STANDARD LEAD PLUG FOUND
- ⊙ CONTROL MONUMENT



D PLAN
B-7767

D. L.
1 4 2 9
PCL. Y(DF30370)
PLAN 646

DETAIL
NOT TO SCALE



EARL'S RESTAURANT PRINCE GEORGE LTD.

APPROVED UNDER THE LAND TITLE ACT
THIS 11th DAY OF September 19 96

AUTHORIZED SIGNATORY
HERMANN VON PFETTEN
PRINT NAME

APPROVING OFFICER, CITY OF PRINCE GEORGE.

AUTHORIZED SIGNATORY
PRINT NAME

Witness (AS TO BOTH SIGNATURES)
Robin Levesque
PRINT NAME
1100 Patricia Boulevard
ADDRESS

Property Agent
OCCUPATION

THIS PLAN LIES WITHIN THE FRASER-
FORT GEORGE REGIONAL DISTRICT.

R. L. JOHNS LAND SURVEYING LTD.
LEGAL AND ENGINEERING SURVEYS
240 VICTORIA STREET
PRINCE GEORGE, B. C. V2L 2J4
PHONE: (604)562-5759
FAX: (604)562-5703

I, RONALD L. JOHNS, A BRITISH COLUMBIA LAND SURVEYOR, OF PRINCE GEORGE, IN BRITISH COLUMBIA, CERTIFY THAT I WAS PRESENT AT AND PERSONALLY SUPERINTENDED THE SURVEY REPRESENTED BY THIS PLAN AND THAT THE SURVEY AND PLAN ARE CORRECT. THE SURVEY WAS COMPLETED ON THE 25TH DAY OF JUNE, 1996.

R.L. JOHNS, B.C.L.S., C.L.S.