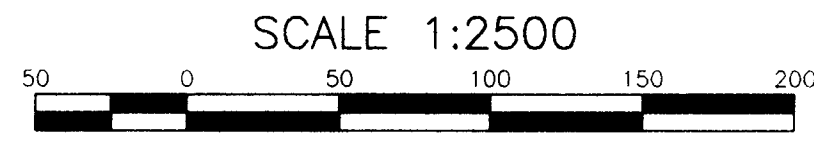


PLAN OF STATUTORY RIGHT-OF-WAY THROUGH  
THE SOUTH EAST 1/4 OF DISTRICT LOT 760A  
AND UNSURVEYED CROWN LAND, CARIBOO DISTRICT.  
Pursuant to Section 99(1)(e), Land Title Act

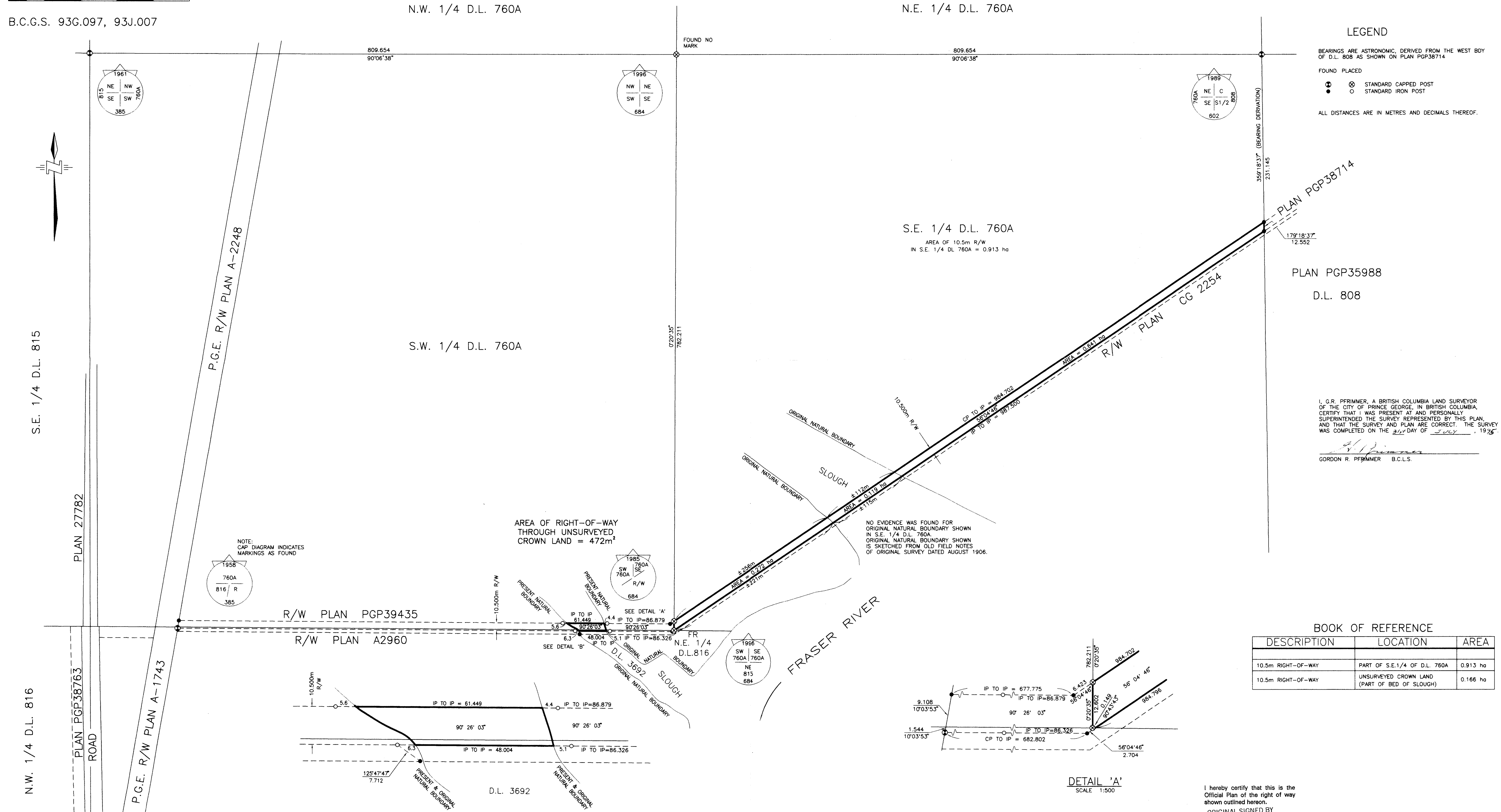
PLAN PGP40605  
DEPOSITED IN THE LAND TITLE OFFICE AT PRINCE GEORGE, B.C.  
THIS 30 DAY OF Oct., 1996  
BB  
REGISTRAR



B.C.G.S. 93G.097, 93J.007

LEGEND

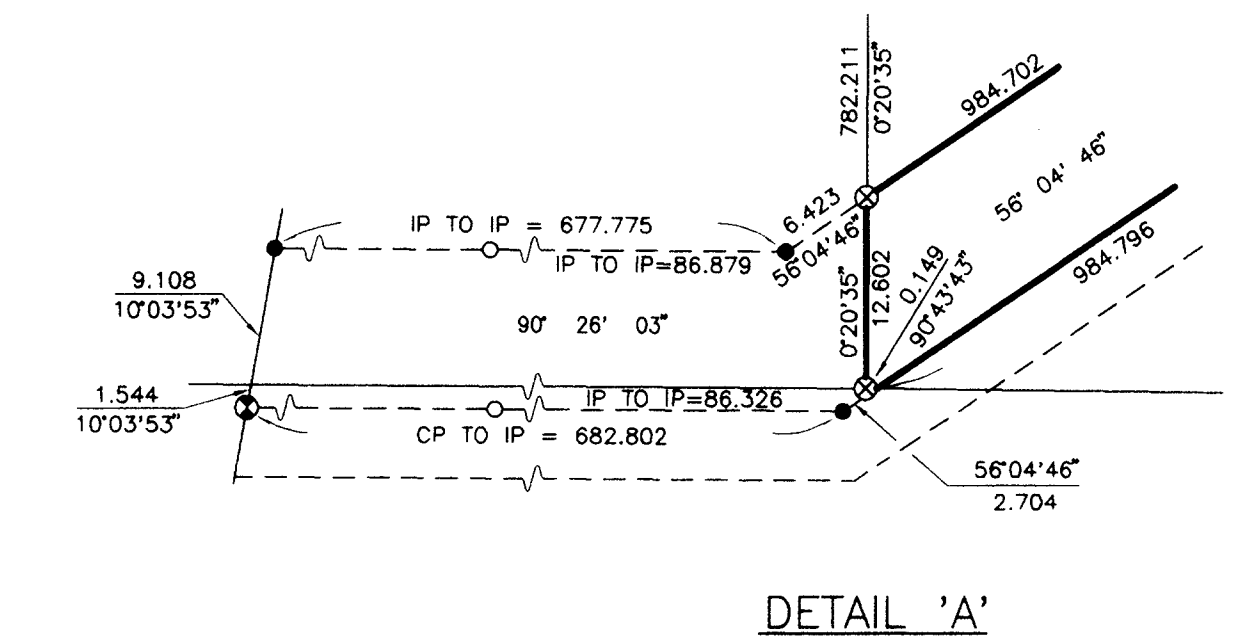
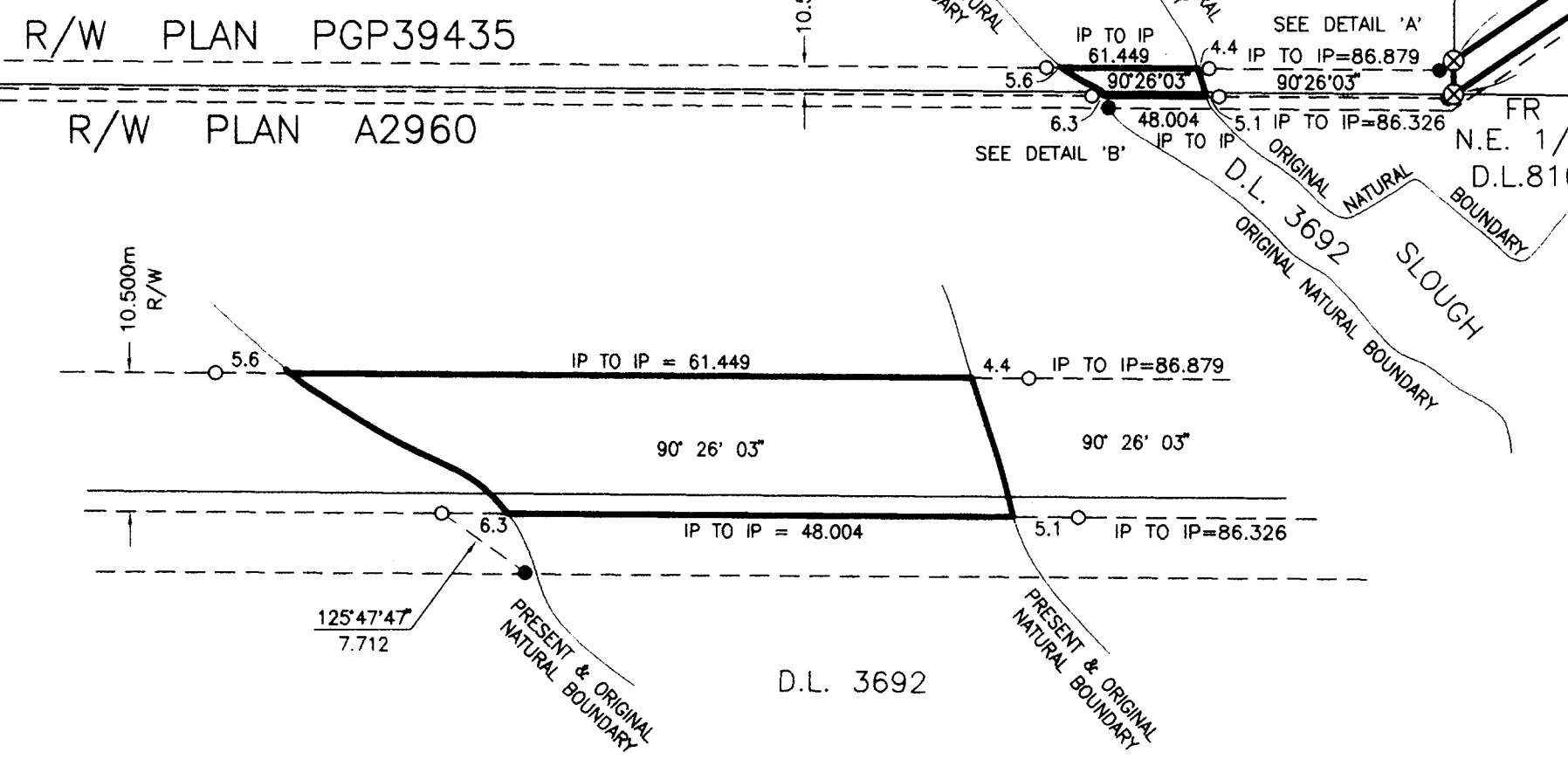
BEARINGS ARE ASTROMONIC, DERIVED FROM THE WEST BODY OF D.L. 808 AS SHOWN ON PLAN PGP38714  
FOUND PLACED  
● ⊗ STANDARD CAPPED POST  
○ ○ STANDARD IRON POST  
ALL DISTANCES ARE IN METRES AND DECIMALS THEREOF.



I, G.R. PFRIMMER, A BRITISH COLUMBIA LAND SURVEYOR OF THE CITY OF PRINCE GEORGE, IN BRITISH COLUMBIA, CERTIFY THAT I WAS PRESENT AT AND PERSONALLY SUPERINTENDED THE SURVEY REPRESENTED BY THIS PLAN, AND THAT THE SURVEY AND PLAN ARE CORRECT. THE SURVEY WAS COMPLETED ON THE 31<sup>st</sup> DAY OF JULY, 1996.  
G.R. Primmer  
GORDON R. PFRIMMER B.C.L.S.

BOOK OF REFERENCE

DESCRIPTION	LOCATION	AREA
10.5m RIGHT-OF-WAY	PART OF S.E.1/4 OF D.L. 760A	0.913 ha
10.5m RIGHT-OF-WAY	UNSURVEYED CROWN LAND (PART OF BED OF SLOUGH)	0.166 ha



I hereby certify that this is the Official Plan of the right of way shown outlined hereon.  
ORIGINAL SIGNED BY  
PATRICK RINGWOD  
Surveyor General  
Victoria, B.C. October 23, 1996.

McELHANNEY ASSOCIATES PROFESSIONAL LAND SURVEYORS  
1584 7th AVENUE PRINCE GEORGE, B.C. V2L 3P4  
FILE: 2511-05129-1  
DWG: 5129CL-2.DWG