

PLAN OF SUBDIVISION OF PART OF S.E. 1/4 OF DISTRICT LOT 2433 CARIBOO DISTRICT.

B.C.G.S. 930,007

Scale: 1 : 1000 (Distances are in metres)

- LEGEND**
- ⊙ Standard Capped Post Found
 - ⊗ Standard Capped Post Placed
 - Standard Iron Post Found
 - Standard Iron Post Placed
 - ▲ Control Monument Found
- BT bearings are magnetic

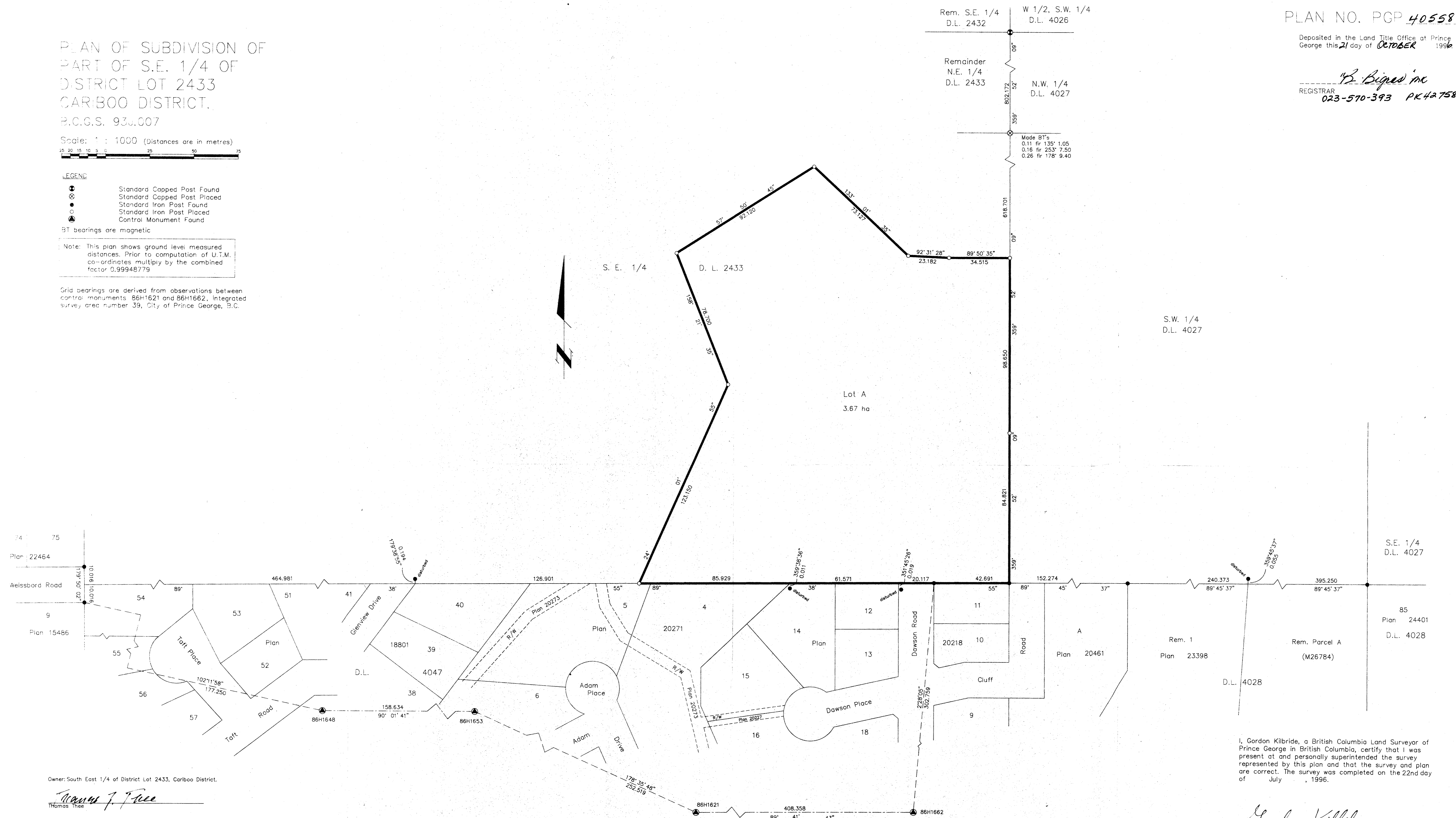
Note: This plan shows ground level measured distances. Prior to computation of U.T.M. co-ordinates multiply by the combined factor 0.99948779

Grid bearings are derived from observations between control monuments 86H1621 and 86H1662, integrated survey area number 39, City of Prince George, B.C.

PLAN NO. PGP 40558

Deposited in the Land Title Office at Prince George this 21 day of OCTOBER 1996

B. Biggs inc
REGISTRAR
023-570-393 PK42758



Owner: South East 1/4 of District Lot 2433, Cariboo District.

Thomas J. Price
Witness

Print Name: **GARY R. BROWN, Q.C.**
Address: **1598 6th Avenue**
Prince George, B.C. V2L 5G7

Occupation

I, Gordon Kilbride, a British Columbia Land Surveyor of Prince George in British Columbia, certify that I was present at and personally supervised the survey represented by this plan and that the survey and plan are correct. The survey was completed on the 22nd day of July, 1996.

Gordon Kilbride
Gordon Kilbride, B.C.L.S.
LTO Client No. 010909

Approved under the Land Title Act this 10th day of October 1996
E.A. Chantler
Approving Officer
City of Prince George

This plan lies within the Fraser-Fort George Regional District.

KILBRIDE LAND SURVEYING LTD.
British Columbia Land Surveyors
Prince George, B.C.
Ph: (604) 562-1196 Fax: 562-3656

F.B.- RA	D.L.- 2433	FILE No. 960339S1
----------	------------	-------------------