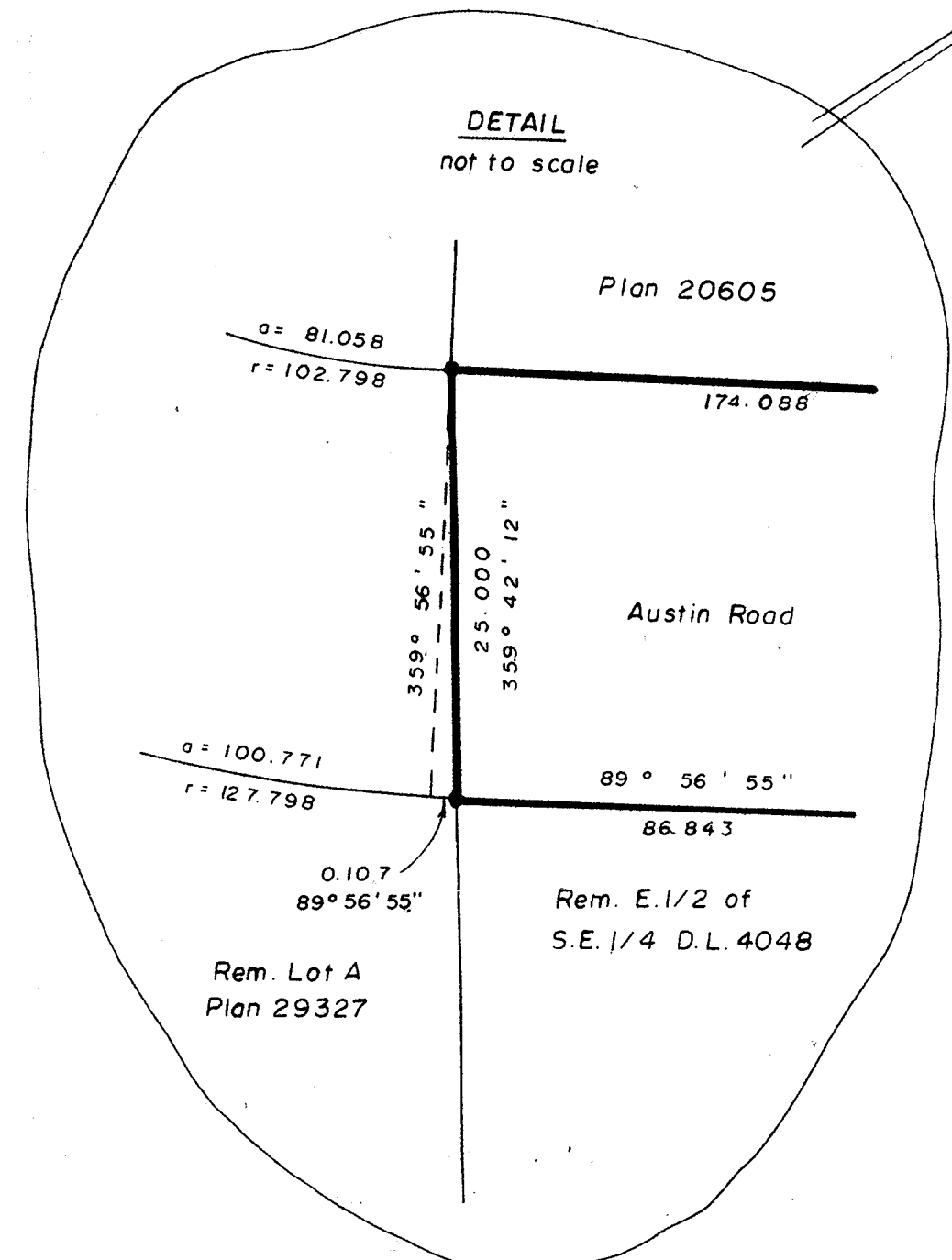
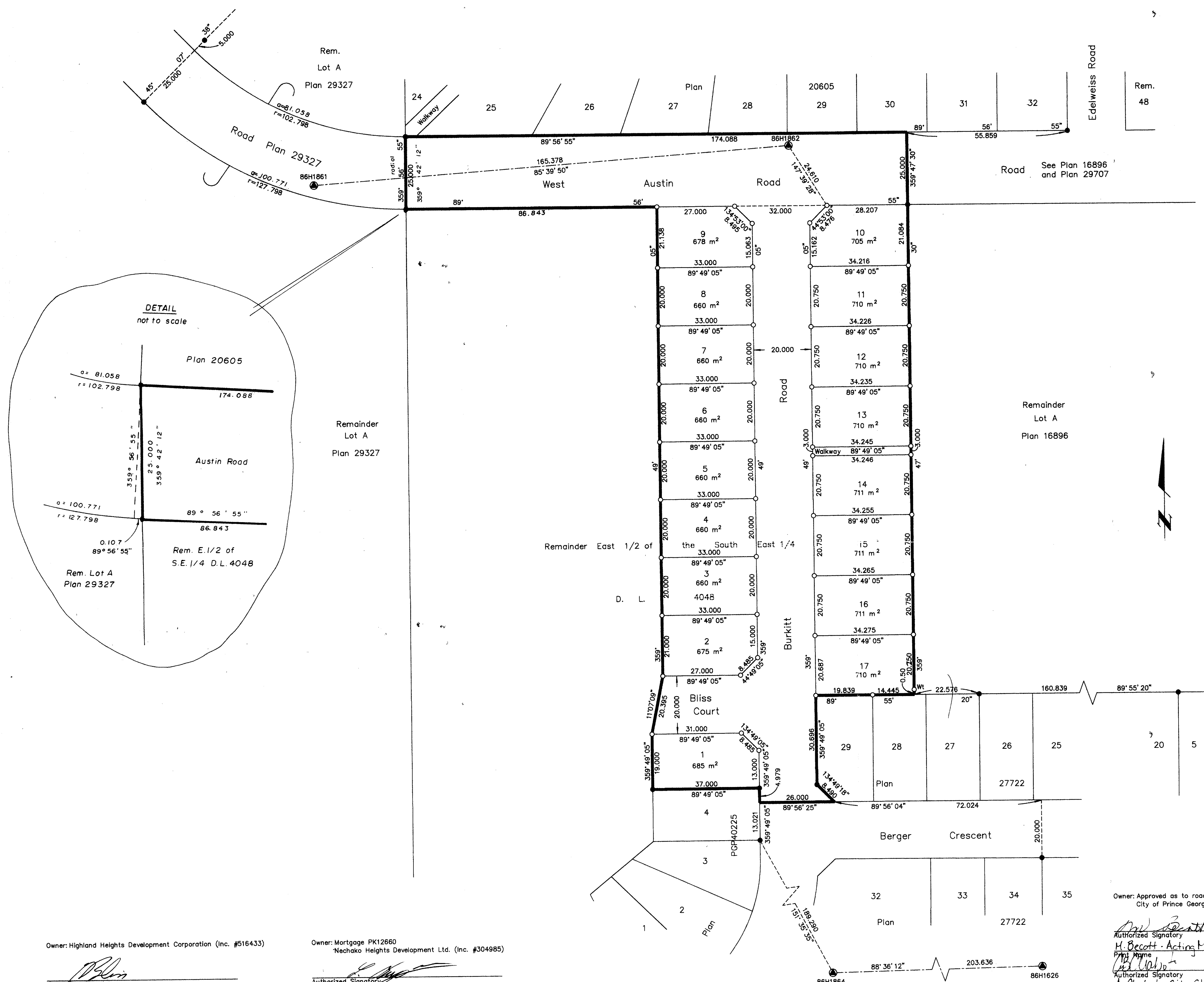


Deposited in the Land Title Office at Prince George this 4 day of Oct 1996

REGISTRAR

BB



PLAN OF SUBDIVISION OF PART OF THE REMAINDER EAST 1/2 OF THE SOUTH EAST 1/4 OF DISTRICT LOT 4048, CARIBOO DISTRICT.

B.C.G.S. 93G.096
Scale: 1 : 750 (Distances are in metres)

Grid bearings are derived from observations between control monuments 86H1862 and 86H1861, integrated survey area number 39, City of Prince George, B.C.

Note: This plan shows ground level measured distances. Prior to computation of U.T.M. co-ordinates multiply by the combined factor 0.99948020

- LEGEND
- Standard Iron Post Found
 - Standard Iron Post Placed
 - ⊙ Control Monument Found

I, Dale L. Keown, a British Columbia Land Surveyor of Prince George in British Columbia, certify that I was present at and personally superintended the survey represented by this plan and that the survey and plan are correct. The survey was completed on the 13th day of September, 1996.

Owner: Approved as to road dedication
City of Prince George

Authorized Signatory
H. Beckett - Acting Mayor
Authorized Signatory
A. Chabot - City Clerk

Dale L. Keown, B.C.L.S.
LTO Client No. 010908

Witness to both
JUDY DIX
City Hall
Prince George, BC V2L 3V9
Administrative Assistant

Approved under the Land Title Act this 9 day of October 1996
Approving Officer
City of Prince George

This plan lies within the Fraser-Fort George Regional District.

KILBRIDE LAND SURVEYING LTD.
British Columbia Land Surveyors
Prince George, B.C.
Ph: (604) 562-1196 Fax: 562-3656
F.B.- U059 D.L.- 4048 File No. -960187A

Owner: Highland Heights Development Corporation (Inc. #516433)
Authorized Signatory
Print Name
Witnesses
Print Name
J. ROBERT LEVERMAN
Barrister & Solicitor
Address
2200 - 444 Victoria St.
Prince George, B.C. V2L 2J7
Postal Code

Owner: Mortgage PK12660
Nechako Heights Development Ltd. (Inc. #304985)
Authorized Signatory
Print Name
Witnesses
Print Name
J. ROBERT LEVERMAN
Address
Prince George, B.C. V2L 2J7
Postal Code