

REFERENCE PLAN TO ACCOMPANY
 CITY OF PRINCE GEORGE ROAD EXCHANGE BYLAW 6629
 CLOSING PART OF LANE ADJACENT TO
 LOT 1, PLAN 30757
 AND ESTABLISHING AS ROAD PART OF
 LOT 18, BLOCK 56, PLAN 696 &
 LOT 1, PLAN 10771
DISTRICT LOT 936
 CARIBOO DISTRICT

B.C.G.S. 93G.097

PURSUANT TO SECTION 574 OF THE ~~LAND TITLE~~ ^{MUNICIPAL} ACT.



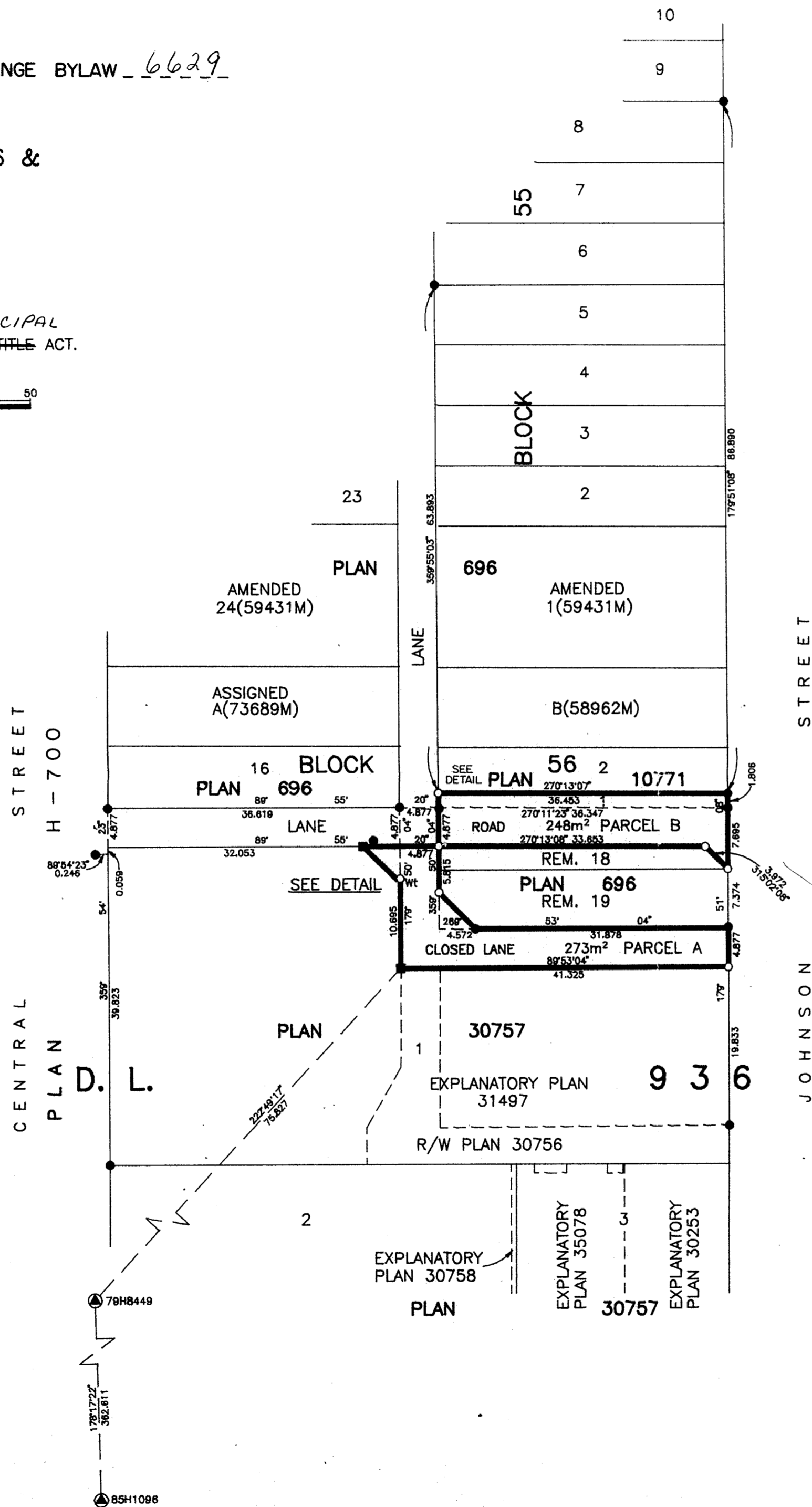
SCALE = 1 : 500
 ALL DISTANCES ARE SHOWN IN METRES.

THIS PLAN SHOWS GROUND-LEVEL MEASURED DISTANCES,
 PRIOR TO COMPUTATION OF U.T.M. COORDINATES, MULTIPLY
 BY COMBINED FACTOR 0.99950855.

GRID BEARINGS ARE DERIVED FROM OBSERVATIONS
 BETWEEN CONTROL MONUMENTS 79HB449, AND 85H1096,
 INTEGRATED SURVEY AREA NUMBER 39, PRINCE GEORGE.

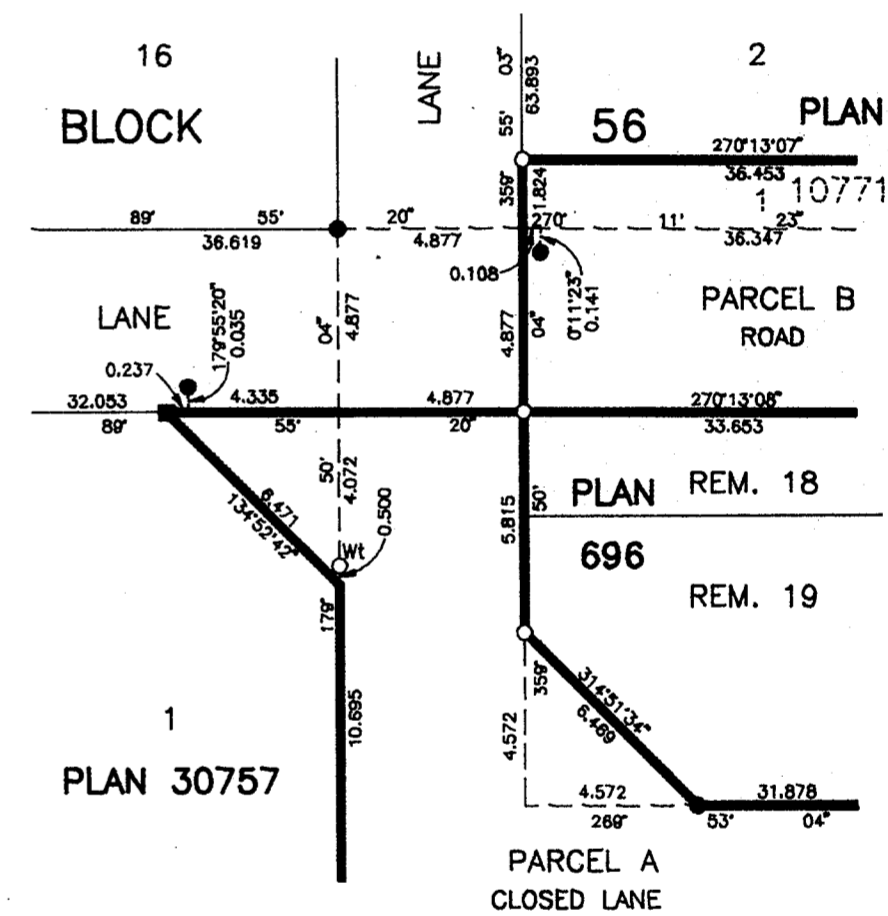
LEGEND

- STANDARD IRON POST FOUND
- STANDARD IRON POST PLACED
- STANDARD LEAD PLUG FOUND
- ⊙ CONTROL MONUMENT



PLAN No. PGP 40342
 DEPOSITED IN THE LAND TITLE OFFICE
 AT PRINCE GEORGE, B.C., THIS 15
 DAY OF Aug, 19 96
 REGISTRAR BB

DETAIL
 NOT TO SCALE



B 1 4 2 9
 PLAN B-7767
 LANE
 D
 PLAN B-7767
 PCL. Y(DF30370)
 PLAN 646
 D. L.

I, RONALD L. JOHNS, A BRITISH COLUMBIA LAND SURVEYOR, OF PRINCE GEORGE, IN BRITISH COLUMBIA, CERTIFY THAT I WAS PRESENT AT AND PERSONALLY SUPERINTENDED THE SURVEY REPRESENTED BY THIS PLAN AND THAT THE SURVEY AND PLAN ARE CORRECT. THE SURVEY WAS COMPLETED ON THE 25TH DAY OF JUNE, 1996.

R.L. Johns
 R.L. JOHNS, B.C.L.S., C.L.S.

THIS PLAN LIES WITHIN THE FRASER-FORT GEORGE REGIONAL DISTRICT.

R. L. JOHNS LAND SURVEYING LTD.
 LEGAL AND ENGINEERING SURVEYS
 240 VICTORIA STREET
 PRINCE GEORGE, B. C. V2L 2J4
 PHONE: (804)562-5759
 FAX: (804)562-5703