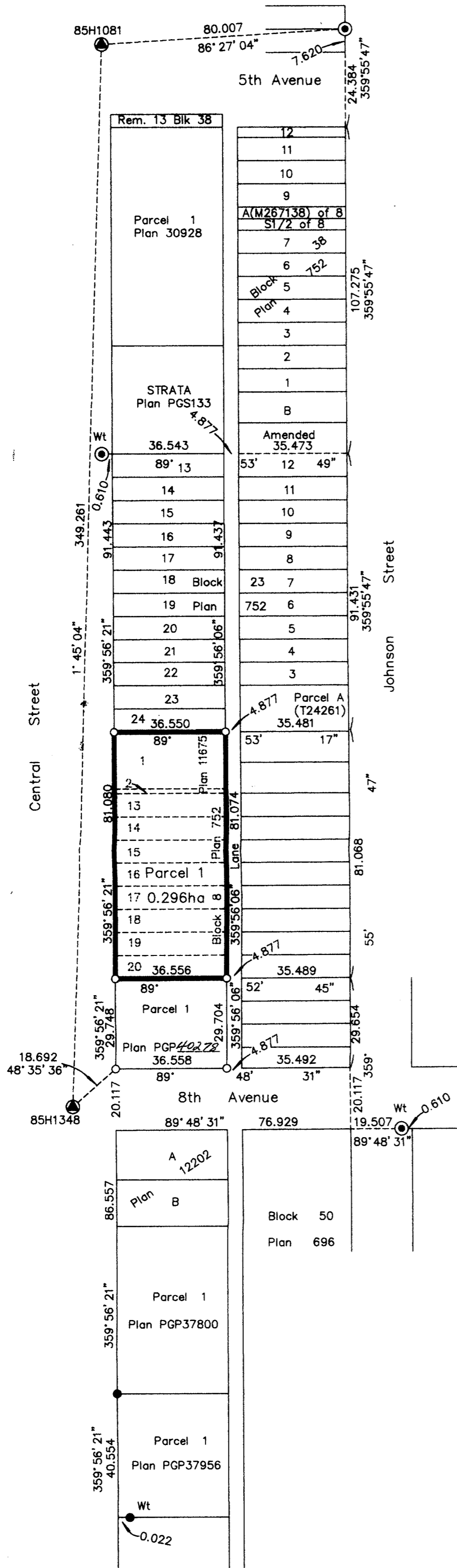


Deposited in the Land Title Office at Prince George this 6 day of August 1996

B.B

REGISTRAR



REFERENCE PLAN OF CONSOLIDATION OF LOTS 13 TO 20 INCLUSIVE, BLOCK 8, PLAN 752 AND LOTS 1 AND 2, PLAN 11675, DISTRICT LOT 937, CARIBOO DISTRICT. PREPARED PURSUANT TO SECTION 100 (1) (b) OF THE LAND TITLE ACT. B.C.G.S. 93G.097

Scale: 1 : 1250 (Distances are in metres)



Grid bearings are derived from observations between control monuments 85H1348 and 85H1081, integrated survey area number 39, City of Prince George, B.C.

Note: This plan shows ground level measured distances. Prior to computation of U.T.M. co-ordinates multiply by the combined factor 0.99950874

LEGEND

- Standard Concrete Post Found
- Standard Iron Post Found
- Standard Iron Post Placed
- ⊙ Control Monument Found

I, Dale L. Keown, a British Columbia Land Surveyor of Prince George in British Columbia, certify that I was present at and personally superintended the survey represented by this plan and that the survey and plan are correct. The survey was completed on the 8th day of July, 1996.

*Dale Keown*

Dale L. Keown, B.C.L.S.  
LTO Client No. 010908

This plan lies within the Fraser-Fort George Regional District.

**KILBRIDE LAND SURVEYING LTD.**  
British Columbia Land Surveyors  
Prince George, B.C.  
Ph: (604) 562-1196 Fax: 562-3656

F.B.- UL73 D.L.- 937 File No. -960438