

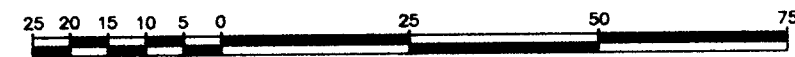
PLAN OF SUBDIVISION OF
 LOTS 1 AND 2, PLAN 20803, AND
 PART OF REMAINDER OF PARCEL Z (DF 24049),
 PLAN 646, DISTRICT LOT 1429, CARIBOO DISTRICT.

PLAN NO. PGP 40268

Deposited in the Land Title Office at Prince
 George this 17 day of July 1996.

B.C.G.S. 93G.097

Scale: 1 : 1000 (Distances are in metres)

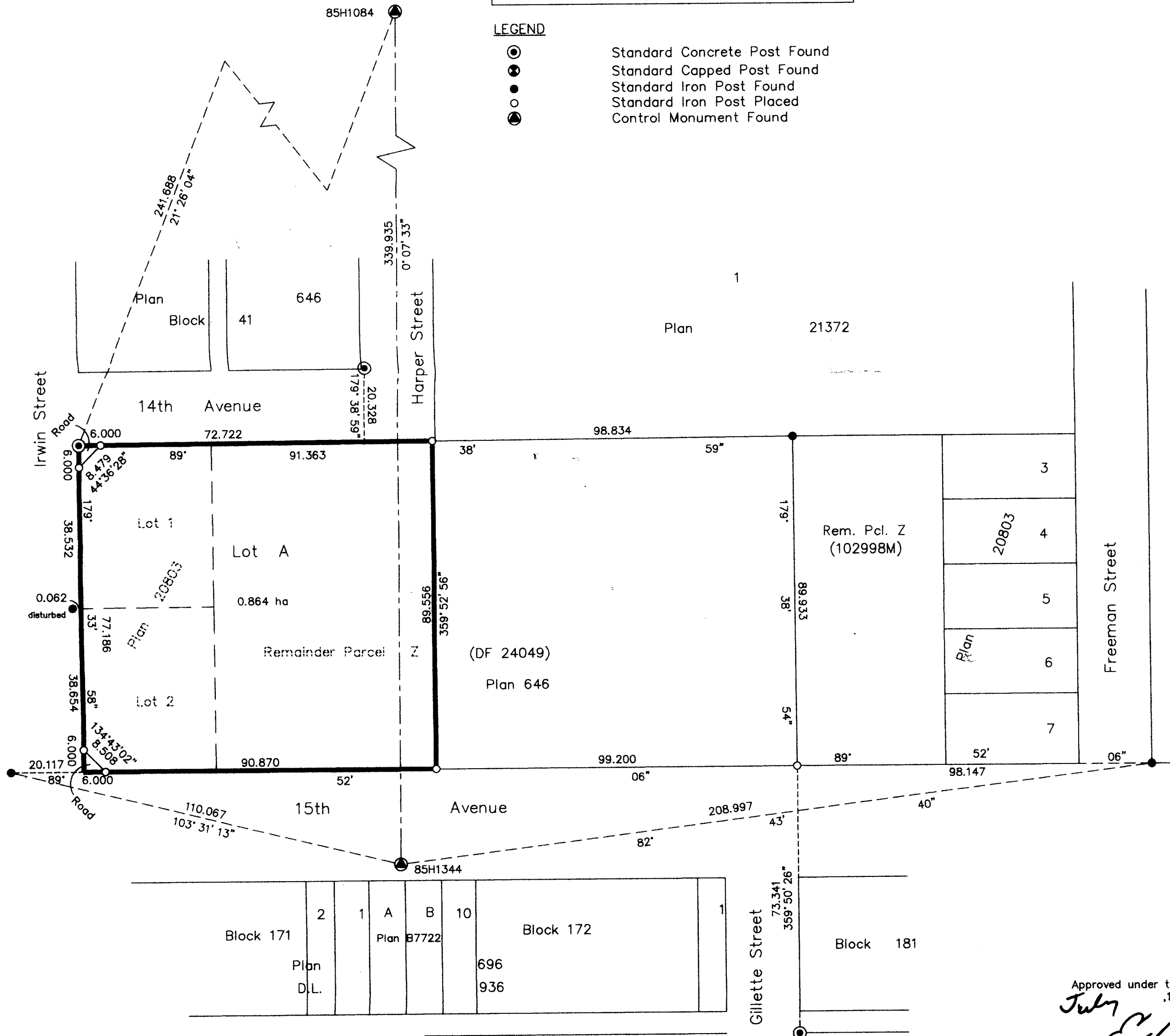


Grid bearings are derived from observations between
 control monuments 85H1344 and 85H1084, integrated
 survey area number 39, City of Prince George, B.C.

Note: This plan shows ground level measured
 distances. Prior to computation of U.T.M.
 co-ordinates multiply by the combined
 factor 0.99950933

LEGEND

- Standard Concrete Post Found
- ⊙ Standard Capped Post Found
- Standard Iron Post Found
- Standard Iron Post Placed
- Control Monument Found



Owner: City of Prince George
 Authorized Signatory: Mayor John Backhouse
 Print Name: John Backhouse
 Authorized Signatory: City Clerk Allen Chabot
 Print Name: Allen Chabot
 Witness to both: Amber McMullen
 Print Name: Amber McMullen
 Address: 4127 2nd Rd
 Prince George, BC V2N 2H9
 Postal Code: V2N 2H9
 Occupation: Microfilm Clerk I

I, Gordon Kilbride, a British Columbia Land Surveyor of
 Prince George in British Columbia, certify that I was
 present at and personally superintended the survey
 represented by this plan and that the survey and plan
 are correct. The survey was completed on the 17th day
 of July, 1996.

Gordon Kilbride
 Gordon Kilbride, B.C.L.S.
 LTO Client No. 010909

This plan lies within the Fraser-Fort
 George Regional District.

Approved under the Land Title Act this 17th day of July 1996
 Ed Chabot
 Approving Officer
 City of Prince George

KILBRIDE LAND SURVEYING LTD.
 British Columbia Land Surveyors
 Prince George, B.C.
 Ph: (604) 562-1196 Fax: 562-3656

F.B.- VN18 D.L.- 1429 FILE No. 950887SU