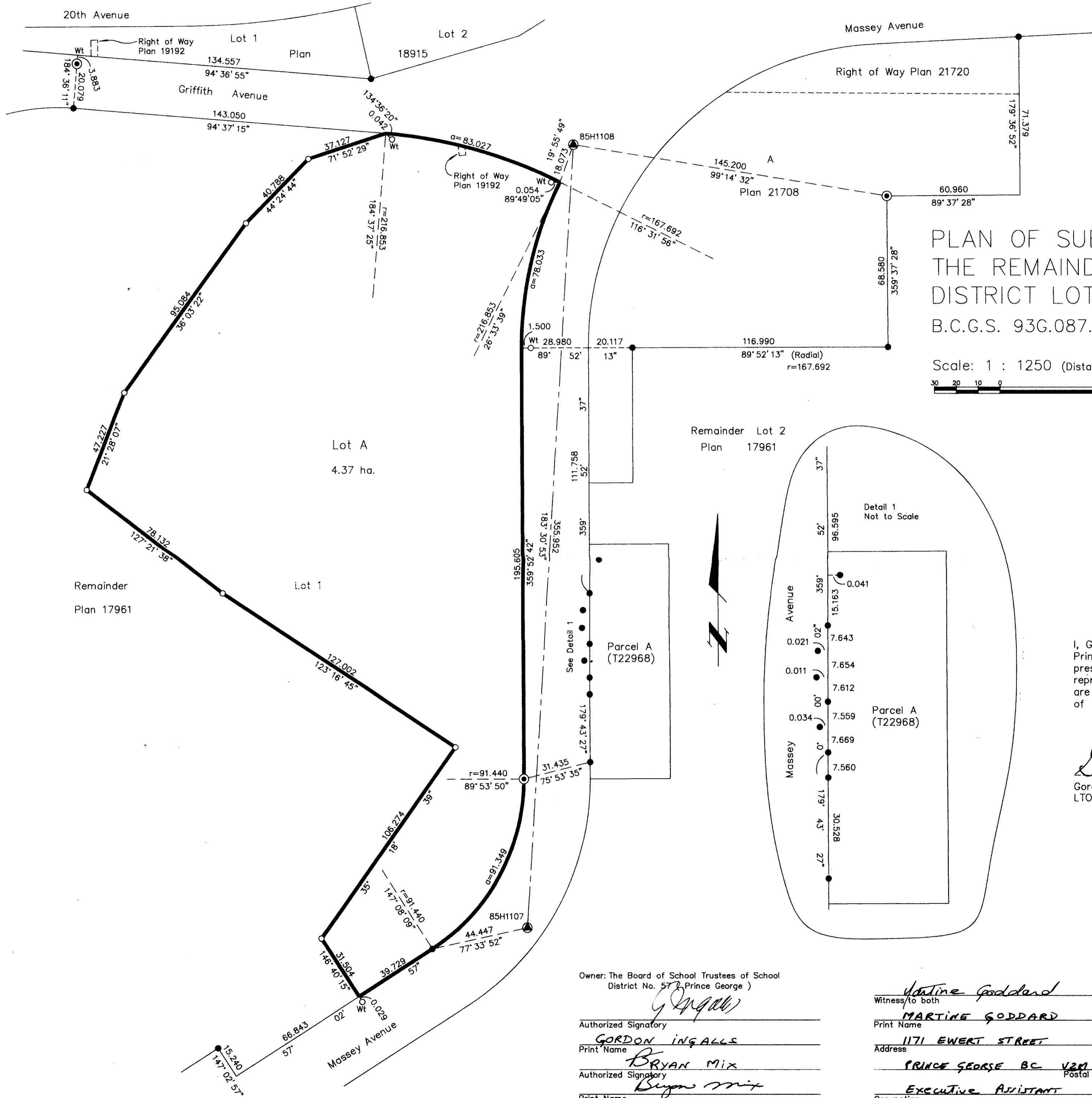


HL



PLAN NO. PGP 40216

Deposited in the Land Title Office at Prince George this 9 day of July 1996

BB
REGISTRAR

PLAN OF SUBDIVISION OF PART OF THE REMAINDER OF LOT 1, PLAN 17961, DISTRICT LOT 1430, CARIBOO DISTRICT. B.C.G.S. 93G.087.

Scale: 1 : 1250 (Distances are in metres)
30 20 10 0 50 100

Grid bearings are derived from observations between control monuments 85H1108 and 85H1107, integrated survey area number 39, City of Prince George, B.C.

Note: This plan shows ground level measured distances. Prior to computation of U.T.M. co-ordinates multiply by the combined factor 0.99951333

LEGEND

- Standard Concrete Post Found
- Standard Iron Post Found
- Standard Iron Post Placed
- ⊙ Control Monument

I, Gordon Kilbride, a British Columbia Land Surveyor of Prince George in British Columbia, certify that I was present at and personally supervised the survey represented by this plan and that the survey and plan are correct. The survey was completed on the 26th day of November, 1995.

Gordon Kilbride
Gordon Kilbride, B.C.L.S.
LTO Client No. 010909

Approved under the Land Title Act this 10th day of June, 1996

[Signature]
Approving Officer
City of Prince George

This plan lies within the Fraser-Fort George Regional District.

Owner: The Board of School Trustees of School District No. 57 (Prince George)

Authorized Signatory
[Signature]
GORDON INGALLS
Print Name

Authorized Signatory
[Signature]
BRYAN MIX
Print Name

Witness to both
[Signature]
MARTINE GODDARD
Print Name

Address
1171 EWERT STREET
PRINCE GEORGE BC V2M 2P3
Postal Code

Occupation
EXECUTIVE ASSISTANT

KILBRIDE LAND SURVEYING LTD.
British Columbia Land Surveyors
Prince George, B.C.
Ph: (604) 562-1196 Fax: 562-3656

F.B.- UP57 D.L.- 1430 REF. NO.- 950309S