

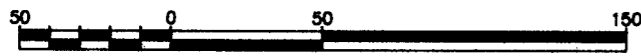
Deposited in the Land Title Office at Prince George this 06 day of June 1996

PLAN OF SUBDIVISION OF PART OF REMAINDER OF LOT 1, PLAN 9101, DISTRICT LOT 2003, CARIBOO DISTRICT.

B.B.
REGISTRAR

B.C.G.S. 93G.087

Scale: 1 : 2500 (Distances are in metres)

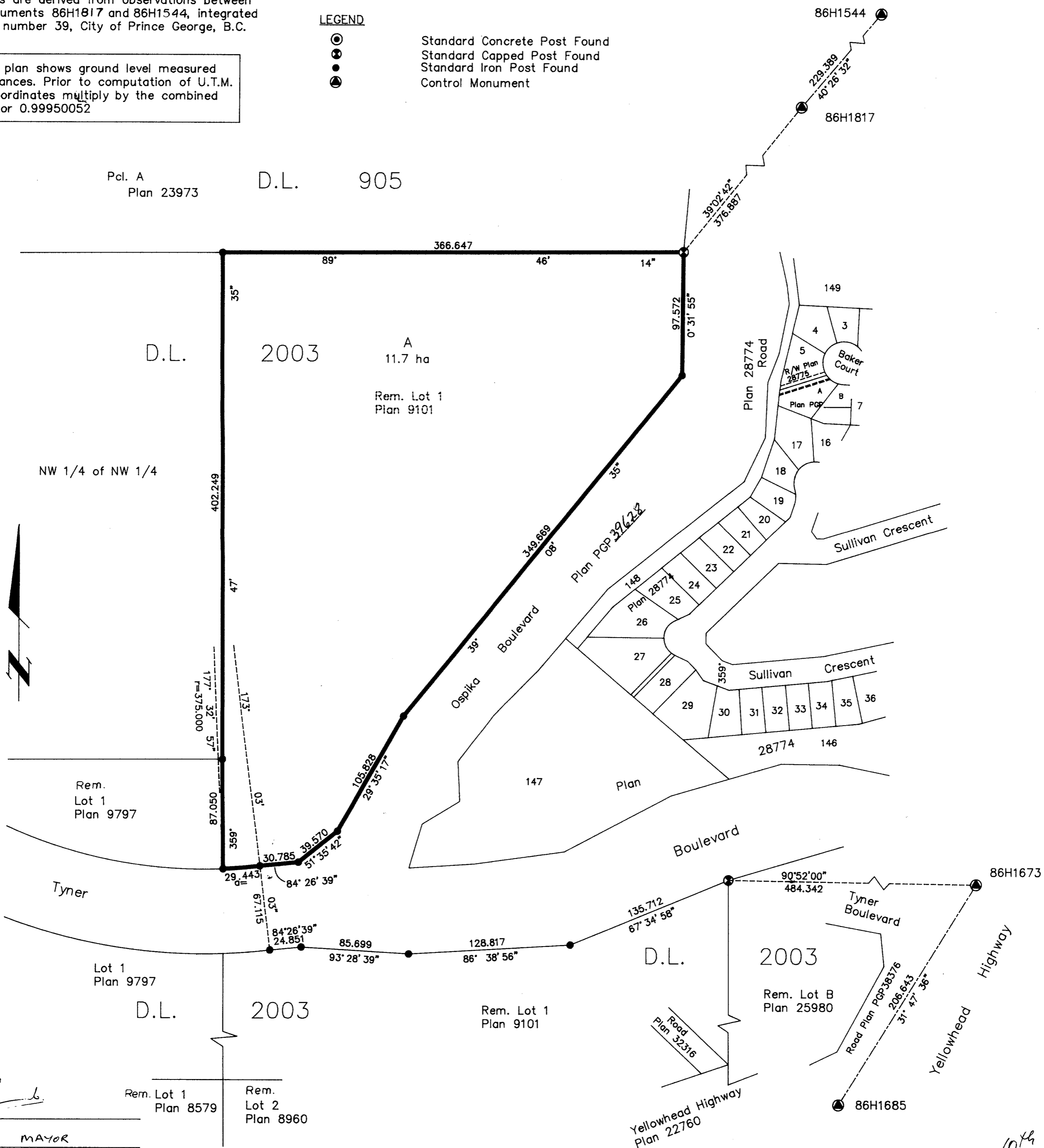


Grid bearings are derived from observations between control monuments 86H1817 and 86H1544, integrated survey area number 39, City of Prince George, B.C.

Note: This plan shows ground level measured distances. Prior to computation of U.T.M. co-ordinates multiply by the combined factor 0.99950052

LEGEND

- Standard Concrete Post Found
- Standard Capped Post Found
- Standard Iron Post Found
- Control Monument



Owner: City of Prince George
 Authorized Signatory: *J.E. Sackhouse*
 Print Name: J.E. SACKHOUSE, MAYOR
 Authorized Signatory: *J.A. Forrest*
 Print Name: J.A. FORREST, CITY CLERK
 Witness to both: *Judy Dix*
 Print Name: JUDY DIX
 Address: City Hall, Prince George, B.C. V2L 3V9
 Occupation: Secretary

Rem. Lot 1 Plan 8579
 Rem. Lot 2 Plan 8960

I, Gordon Kilbride, a British Columbia Land Surveyor of Prince George in British Columbia, certify that I was present at and personally superintended the survey represented by this plan and that the survey and plan are correct. The survey was completed on the 11th day of April, 1995.

Gordon Kilbride
 Gordon Kilbride, B.C.L.S.

Approved under the Land Title Act this 10th day of May 1996

[Signature]
 Approving Officer
 City of Prince George

This plan lies within the Fraser-Fort George Regional District.

KILBRIDE LAND SURVEYING LTD.
 British Columbia Land Surveyors
 Prince George, B.C.
 Ph: (604) 562-1196 Fax: 562-3656

F.B.- UU 25	D.L.- 2003	REF. NO.- 940946S
-------------	------------	-------------------