

PLAN OF SUBDIVISION OF PARTS OF
REM. LOT 1 & LOT 2, PLAN 14340 &
PART OF LOT A, PLAN 13820
DISTRICT LOT 1599
CARIBOO DISTRICT

B.C.G.S 936.086

PLAN No. PGP 40103 -

DEPOSITED IN THE LAND TITLE OFFICE
AT PRINCE GEORGE, B.C., THIS 6
DAY OF June, 19 96

REGISTRAR B.B.

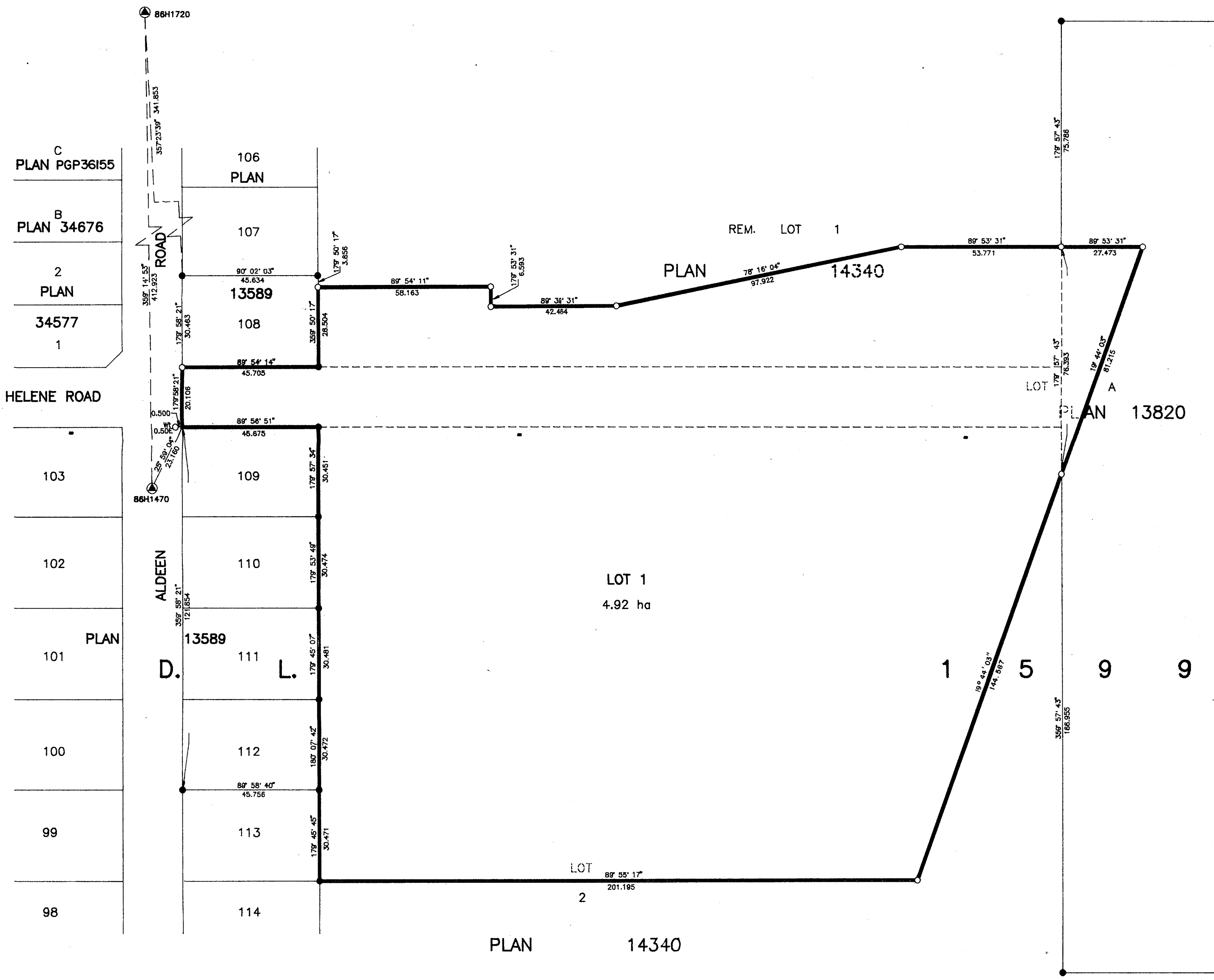
THIS PLAN SHOWS GROUND-LEVEL MEASURED DISTANCES.
PRIOR TO COMPUTATION OF U.T.M. COORDINATES, MULTIPLY
BY COMBINED FACTOR 0.99948454.

GRID BEARINGS ARE DERIVED FROM OBSERVATIONS
BETWEEN CONTROL MONUMENTS 86H1720, AND 86H1470,
INTEGRATED SURVEY AREA NUMBER 39, PRINCE GEORGE.



SCALE = 1 : 1000
ALL DISTANCES ARE IN METRES

- LEGEND
- STANDARD IRON POST FOUND
 - STANDARD IRON POST PLACED
 - ⊙ CONTROL MONUMENT



C	PLAN PGP36155
B	PLAN 34676
2	PLAN 34577
1	
HELENE ROAD	
103	
102	
101	PLAN
100	
99	
98	

BELCO DEVELOPMENTS LTD.
 AUTHORIZED SIGNATORY
[Signature]
 ERIC TRYSB
 PRINT NAME

THE ROMAN CATHOLIC EPISCOPAL CORPORATION OF PRINCE RUPERT
 AUTHORIZED SIGNATORY
[Signature]
 JAMES E. LARKIN
 PRINT NAME

APPROVED UNDER THE LAND TITLE ACT
THIS 4th DAY OF June, 19 96

[Signature]
APPROVING OFFICER, CITY OF PRINCE GEORGE.

I, RONALD L. JOHNS, A BRITISH COLUMBIA LAND SURVEYOR, OF PRINCE GEORGE, IN BRITISH COLUMBIA, CERTIFY THAT I WAS PRESENT AT AND PERSONALLY SUPERINTENDED THE SURVEY REPRESENTED BY THIS PLAN AND THAT THE SURVEY AND PLAN ARE CORRECT. THE SURVEY WAS COMPLETED ON THE 14TH DAY OF MARCH, 1996.

[Signature]
R.L. JOHNS, B.C.L.S., C.L.S.

WITNESS (AS TO BOTH SIGNATURES)
[Signature]
 GRACE JOHNSON
 PRINT NAME
 % 7929-120 St. Delta B.C.
 V4C 6P6
 Legal Secretary
 OCCUPATION

WITNESS (AS TO BOTH SIGNATURES)
 PRINT NAME
 GARY R. BROWN, Q.C.
 ADDRESS
 1508 6th Avenue
 Prince George, B.C. V2L 5G7
 OCCUPATION

THIS PLAN LIES WITHIN THE FRASER-FORT GEORGE REGIONAL DISTRICT.

R. L. JOHNS LAND SURVEYING LTD.
 LEGAL AND ENGINEERING SURVEYS
 240 VICTORIA STREET
 PRINCE GEORGE, B.C. V2L 2J4
 PHONE: (604)562-5759
 FAX: (604)562-5703