

PLAN OF SUBDIVISION OF PART OF
REMAINDER N.E. 1/4
DISTRICT LOT 954
CARIBOO DISTRICT

B.C.G.S. 93G.097

THIS PLAN SHOWS GROUND-LEVEL MEASURED DISTANCES.
PRIOR TO COMPUTATION OF U.T.M. COORDINATES, MULTIPLY
BY COMBINED FACTOR 0.99950000.

GRID BEARINGS ARE DERIVED FROM OBSERVATIONS
BETWEEN CONTROL MONUMENTS 85H1262, AND 85H1271.
INTEGRATED SURVEY AREA NUMBER 39, PRINCE GEORGE.



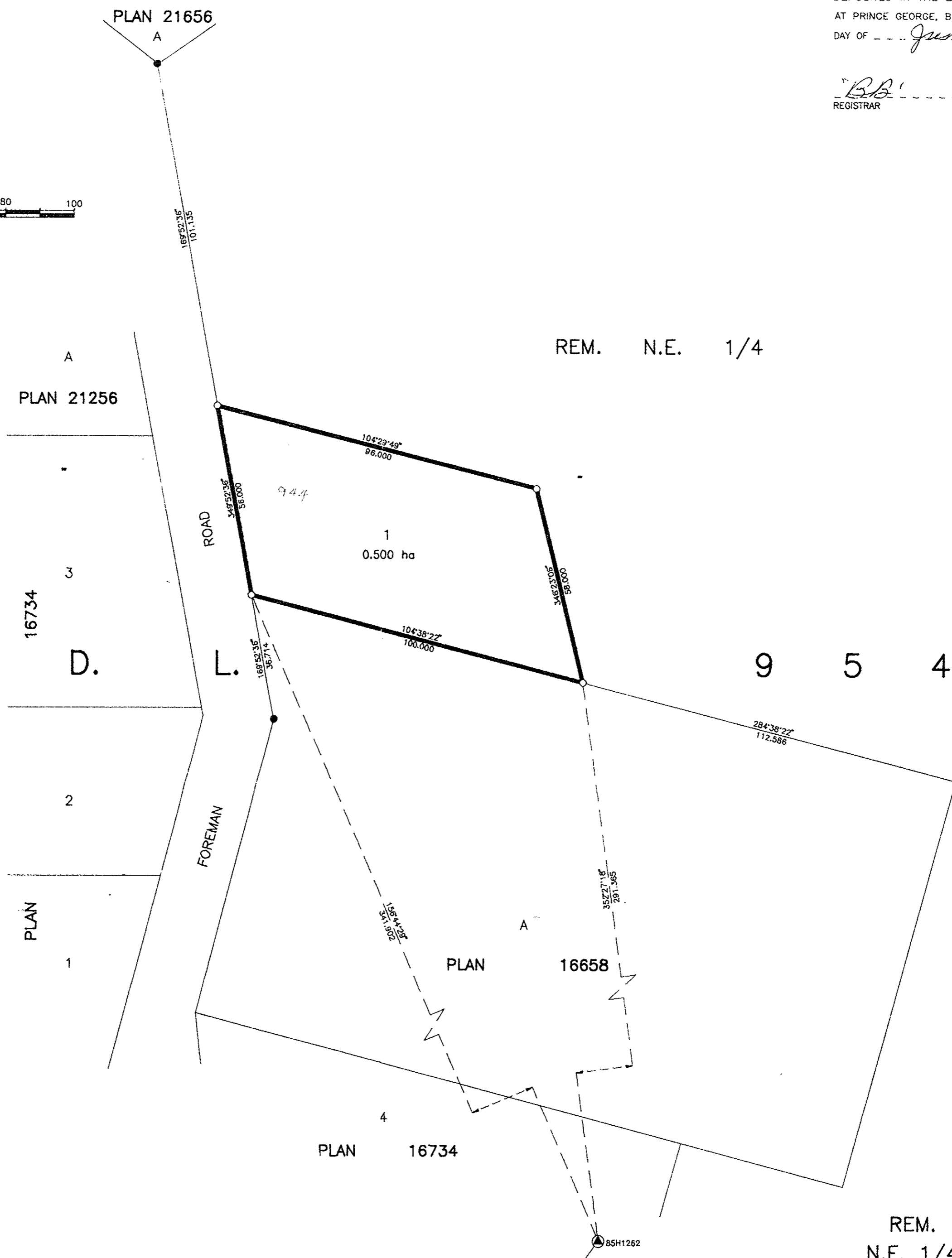
SCALE = 1 : 1000
ALL DISTANCES ARE IN METRES

- LEGEND
- STANDARD IRON POST FOUND
 - STANDARD IRON POST PLACED
 - ▲ CONTROL MONUMENT

PLAN No. PGP 40062

DEPOSITED IN THE LAND TITLE OFFICE
AT PRINCE GEORGE, B.C., THIS 23rd
DAY OF June, 1996.

R.B.
REGISTRAR



ANIK DEVELOPMENTS LTD. INC. #257805

F.L. Kraeber
AUTHORIZED SIGNATORY
F.L. KRAEBER
PRINT NAME

R.E. Shier
WITNESS
R.E. SHIER
240 VICTORIA STREET
PRINT NAME
PRINCE GEORGE, B.C.
ADDRESS

R.L. Johns
LAND SURVEY TECHNOLOGIST
OCCUPATION

APPROVED UNDER THE LAND TITLE ACT
THIS 29th DAY OF May, 1996.

C. J. [Signature]
APPROVING OFFICER, CITY OF PRINCE GEORGE.

I, RONALD L. JOHNS, A BRITISH COLUMBIA LAND
SURVEYOR, OF PRINCE GEORGE, IN BRITISH COLUMBIA,
CERTIFY THAT I WAS PRESENT AT AND PERSONALLY
SUPERINTENDED THE SURVEY REPRESENTED BY THIS
PLAN AND THAT THE SURVEY AND PLAN ARE CORRECT.
THE SURVEY WAS COMPLETED ON THE 13TH DAY OF
MAY, 1996.

R.L. Johns
R.L. JOHNS, B.C.L.S., C.L.S.

THIS PLAN LIES WITHIN THE FRASER-
FORT GEORGE REGIONAL DISTRICT.

R. L. JOHNS LAND SURVEYING LTD.
LEGAL AND ENGINEERING SURVEYS
240 VICTORIA STREET
PRINCE GEORGE, B. C. V2L 2J4
PHONE: (604)562-5759
FAX: (604)562-5703