

JL

REFERENCE PLAN OF CONSOLIDATION
 OF LOTS 19, 20 AND ASSIGNED LOT A
 (55218M) OF BLOCK 317, AND LOTS
 11, 12 AND ASSIGNED LOT A (70354M)
 OF BLOCK 279, PLAN 1268,
 DISTRICT LOT 343, CARIBOO DISTRICT.

PLAN NO. PGP 40004

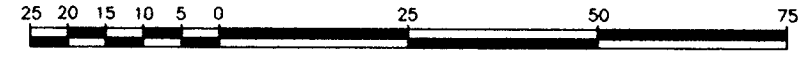
Deposited in the Land Title Office at Prince
George this 21 day of May 1996

BB

REGISTRAR

Pursuant to Section 100(1)(b) of the Land Title Act.
B.C.G.S. 93G.097

Scale: 1 : 1000 (Distances are in metres)

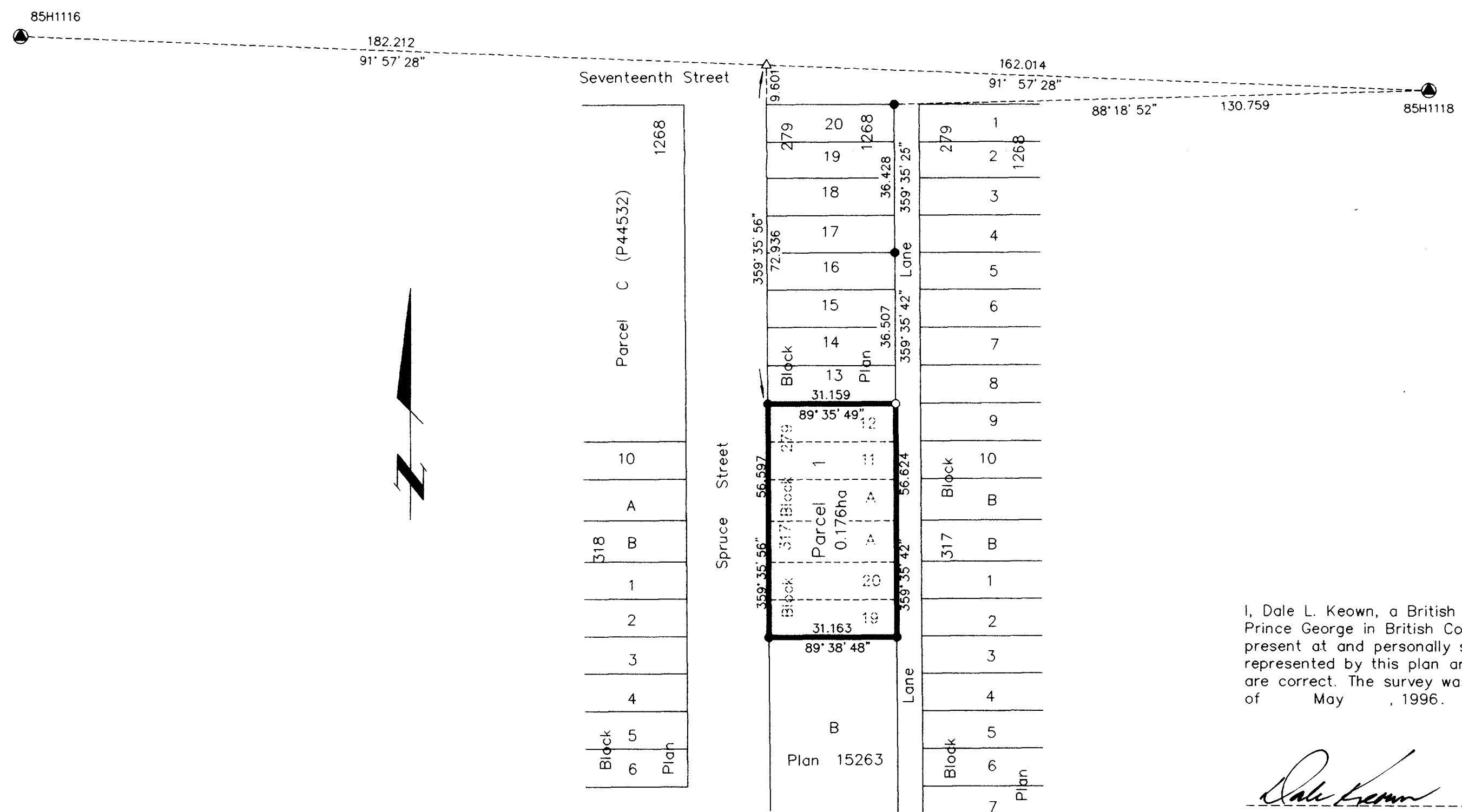


LEGEND

- Standard Iron Post Found
- Standard Iron Post Placed
- ⊙ Control Monument Found
- △ Traverse Hub Placed

Note: This plan shows ground level measured
 distances. Prior to computation of U.T.M.
 co-ordinates multiply by the combined
 factor 0.99951382

Grid bearings are derived from observations between
 control monuments 85H1116 and 85H1118, integrated
 survey area number 39, City of Prince George, B.C.



I, Dale L. Keown, a British Columbia Land Surveyor of
 Prince George in British Columbia, certify that I was
 present at and personally superintended the survey
 represented by this plan and that the survey and plan
 are correct. The survey was completed on the 16th day
 of May, 1996.

Dale Keown

Dale L. Keown, B.C.L.S.
 LTO Client No. 010908

This plan lies within the Fraser-Fort
 George Regional District.

KILBRIDE LAND SURVEYING LTD. British Columbia Land Surveyors Prince George, B.C. Ph: (604) 562-1196 Fax: 562-3656		
F.B.-	D.L.-343/b.317	File No. - 960071