

REFERENCE PLAN OF  
 CONSOLIDATION OF LOTS 13,  
 14, 15, 16, & 17, AND  
 PARCEL A (C3489), ALL  
 OF BLOCK 181, PLAN 1268,  
 DISTRICT LOT 343, CARIBOO  
 DISTRICT.

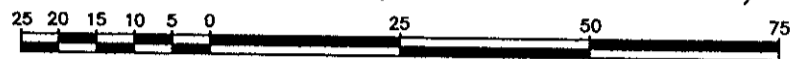
PLAN NO. PGP39948

Deposited in the Land Title Office at Prince  
 George this 24 day of April 1996.

*BB'*  
 -----  
 REGISTRAR

Pursuant to Section 100, Land Title Act.  
 B.C.G.S. 93G.097.

Scale: 1 : 1000 (Distances are in metres)



LEGEND

- Standard Iron Post Found
- Standard Iron Post Placed
- ⊙ Control Monument Found



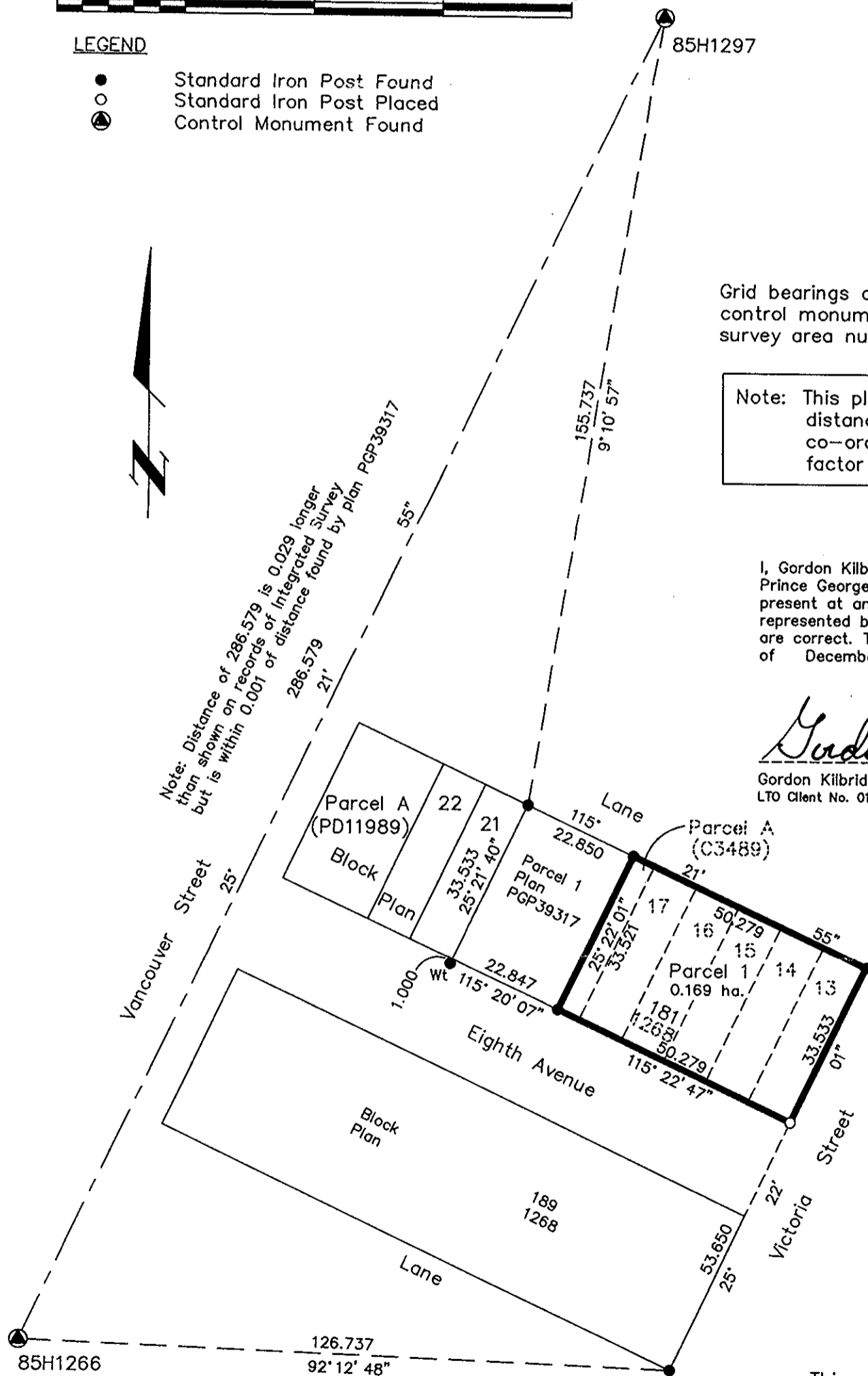
Grid bearings are derived from observations between  
 control monuments 85H1297 and 85H1266, integrated  
 survey area number 39, City of Prince George, B.C.

Note: This plan shows ground level measured  
 distances. Prior to computation of U.T.M.  
 co-ordinates multiply by the combined  
 factor 0.99951288

I, Gordon Kilbride, a British Columbia Land Surveyor of  
 Prince George in British Columbia, certify that I was  
 present at and personally superintended the survey  
 represented by this plan and that the survey and plan  
 are correct. The survey was completed on the 21st day  
 of December, 1995.

*Gordon Kilbride*

Gordon Kilbride, B.C.L.S.  
 LTO Client No. 010909



This plan lies within the Fraser-Fort  
 George Regional District.

<b>KILBRIDE LAND SURVEYING LTD.</b> British Columbia Land Surveyors Prince George, B.C. Ph: (604) 562-1196 Fax: 562-3656		
F.B.- RA	D.L.- 343(181)	REF. NO.- 950947