

Deposited in the Land Title Office at Prince George this 14th day of March 1996

REGISTRAR *B.B.*

PLAN OF CONSOLIDATION OF LOT A (62131M), BLOCK 312, & LOT A (68188M), BLOCK 284, PLAN 1268, DISTRICT LOT 343, CARIBOO DISTRICT.

B.C.G.S. 93G.097

Scale: 1 : 1000 (Distances are in metres)

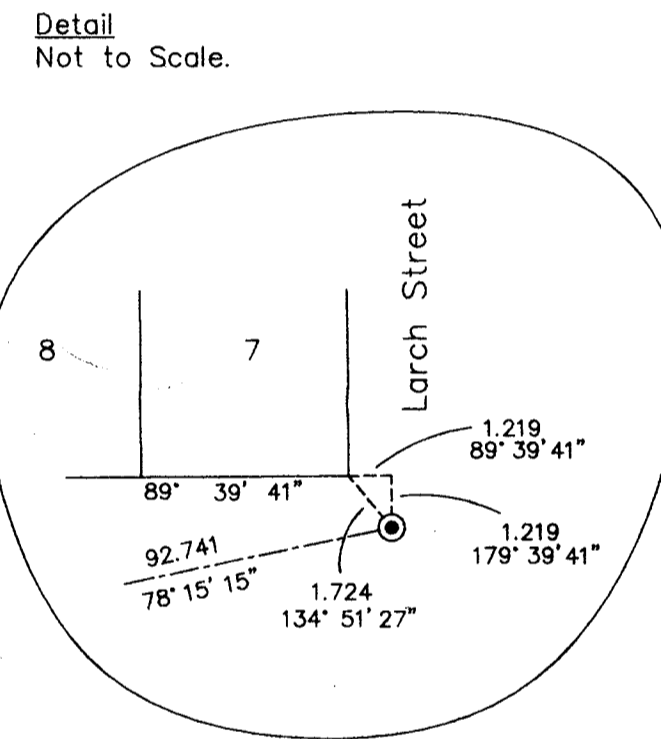


Note: This plan shows ground level measured distances. Prior to computation of U.T.M. co-ordinates multiply by the combined factor 0.99951265

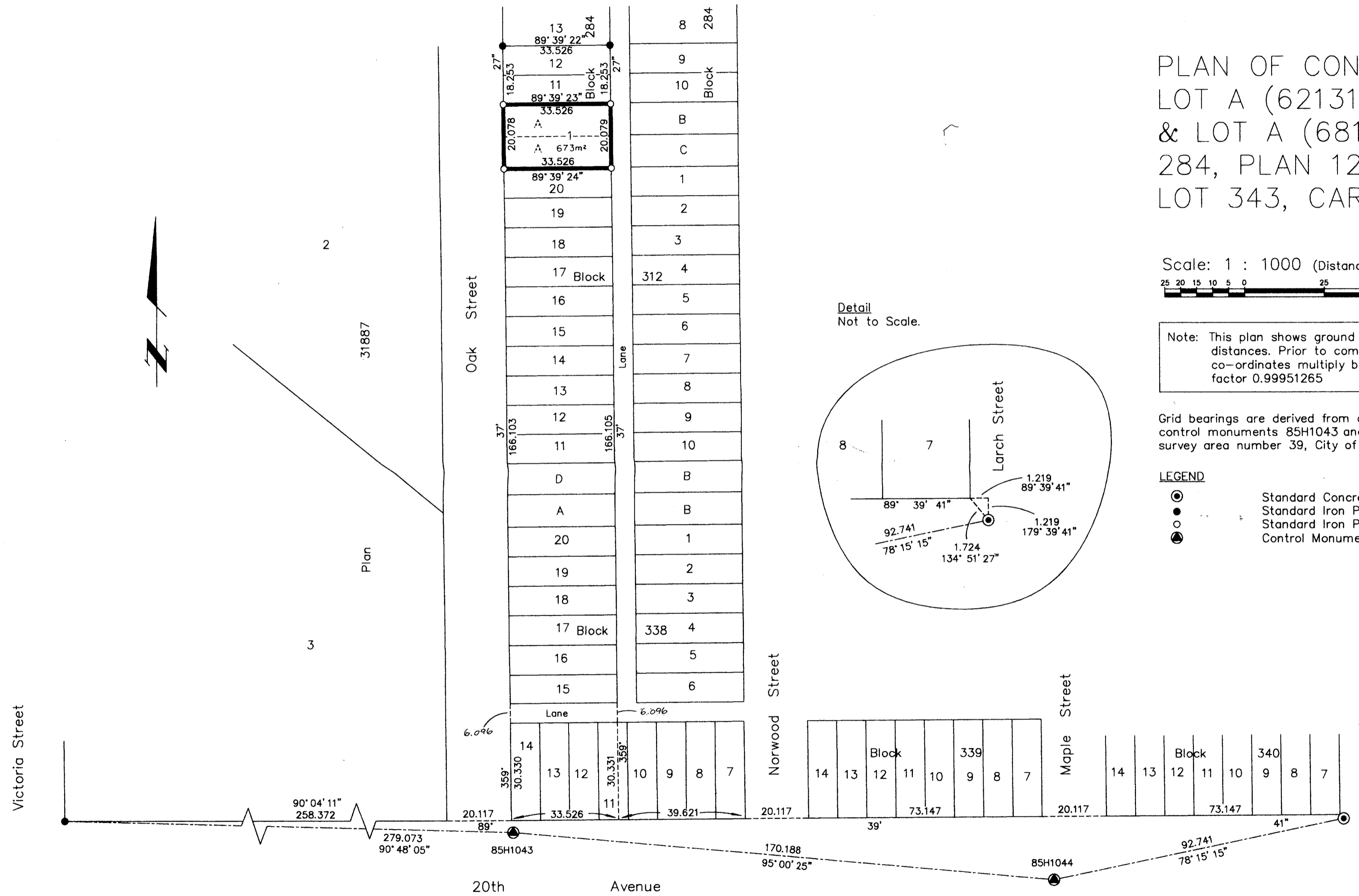
Grid bearings are derived from observations between control monuments 85H1043 and 85H1044, integrated survey area number 39, City of Prince George, B.C.

LEGEND

- Standard Concrete Post Found
- Standard Iron Post Found
- Standard Iron Post Placed
- Control Monument Found



Detail Not to Scale.



I, Gordon Kilbride, a British Columbia Land Surveyor of Prince George in British Columbia, certify that I was present at and personally superintended the survey represented by this plan and that the survey and plan are correct. The survey was completed on the 5th day of March, 1996.

Gordon Kilbride
Gordon Kilbride, B.C.L.S.
LTO Client No. 010909

This plan lies within the Fraser-Fort George Regional District.

KILBRIDE LAND SURVEYING LTD.
British Columbia Land Surveyors
Prince George, B.C.
Ph: (604) 562-1196 Fax: 562-3656

F.B.- UL 49 D.L.- 343 REF. NO.- 960090