

PLAN OF STATUTORY RIGHT OF WAY OVER PARTS OF DISTRICT LOT 938A, REMAINDER DISTRICT LOT 1427A AND THAT PORTION OF DISTRICT LOT 1427 LYING NORTH OF PLAN A-98, ALL OF CARIBOO DISTRICT. B.C.G.S. 93G.096 & 93G.097

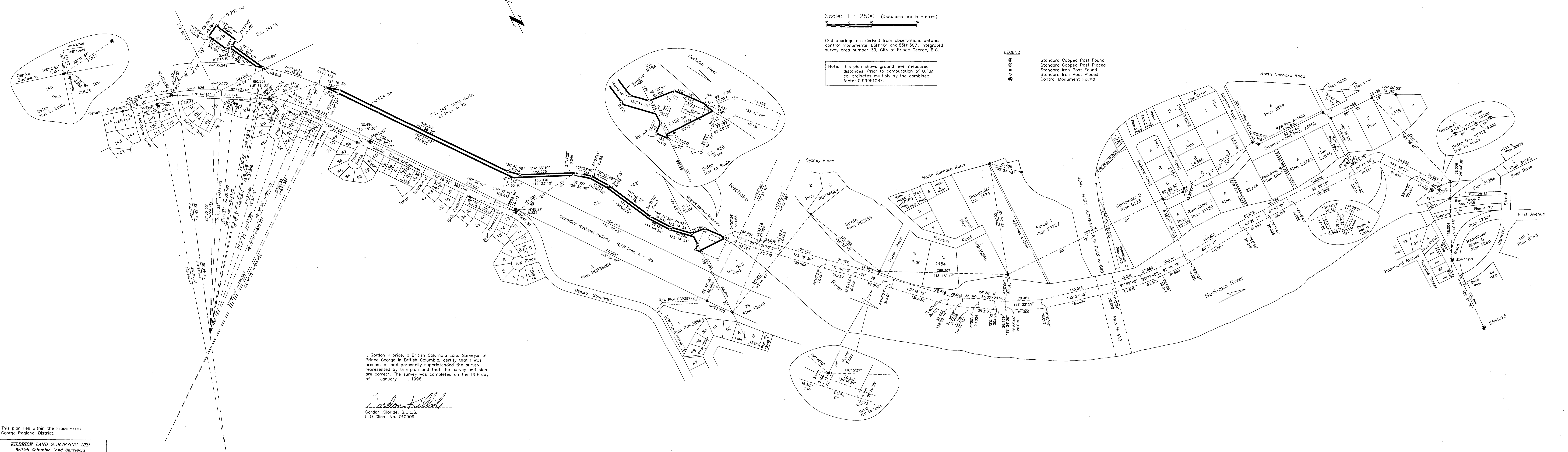
Scale: 1 : 2500 (Distances are in metres)

Grid bearings are derived from observations between control monuments 85H1161 and 85H1307, integrated survey area number 39, City of Prince George, B.C.

Note: This plan shows ground level measured distances. Prior to computation of U.T.M. co-ordinates multiply by the combined factor 0.99951087.

LEGEND

- Standard Capped Post Found
- Standard Capped Post Placed
- Standard Iron Post Found
- Standard Iron Post Placed
- Control Monument Found



I, Gordon Kilbride, a British Columbia Land Surveyor of Prince George in British Columbia, certify that I was present at and personally superintended the survey represented by this plan and that the survey and plan are correct. The survey was completed on the 16th day of January, 1996.

Gordon Kilbride
Gordon Kilbride, B.C.L.S.
LTO Client No. 010909

This plan lies within the Fraser-Fort George Regional District.

KILBRIDE LAND SURVEYING LTD.
British Columbia Land Surveyors
Prince George, B.C.
Ph: (604) 562-1196 Fax: 562-3656
E.B.: UABO D.L.: 838 REF. NO.: 940004