

PLAN OF STATUTORY RIGHT OF WAYS THROUGH PARTS OF DISTRICT LOT 2611 AND THE SOUTH 30 CHAINS OF DISTRICT LOT 2612, CARIBOO DISTRICT. B.C.G.S. 93G.086, .096

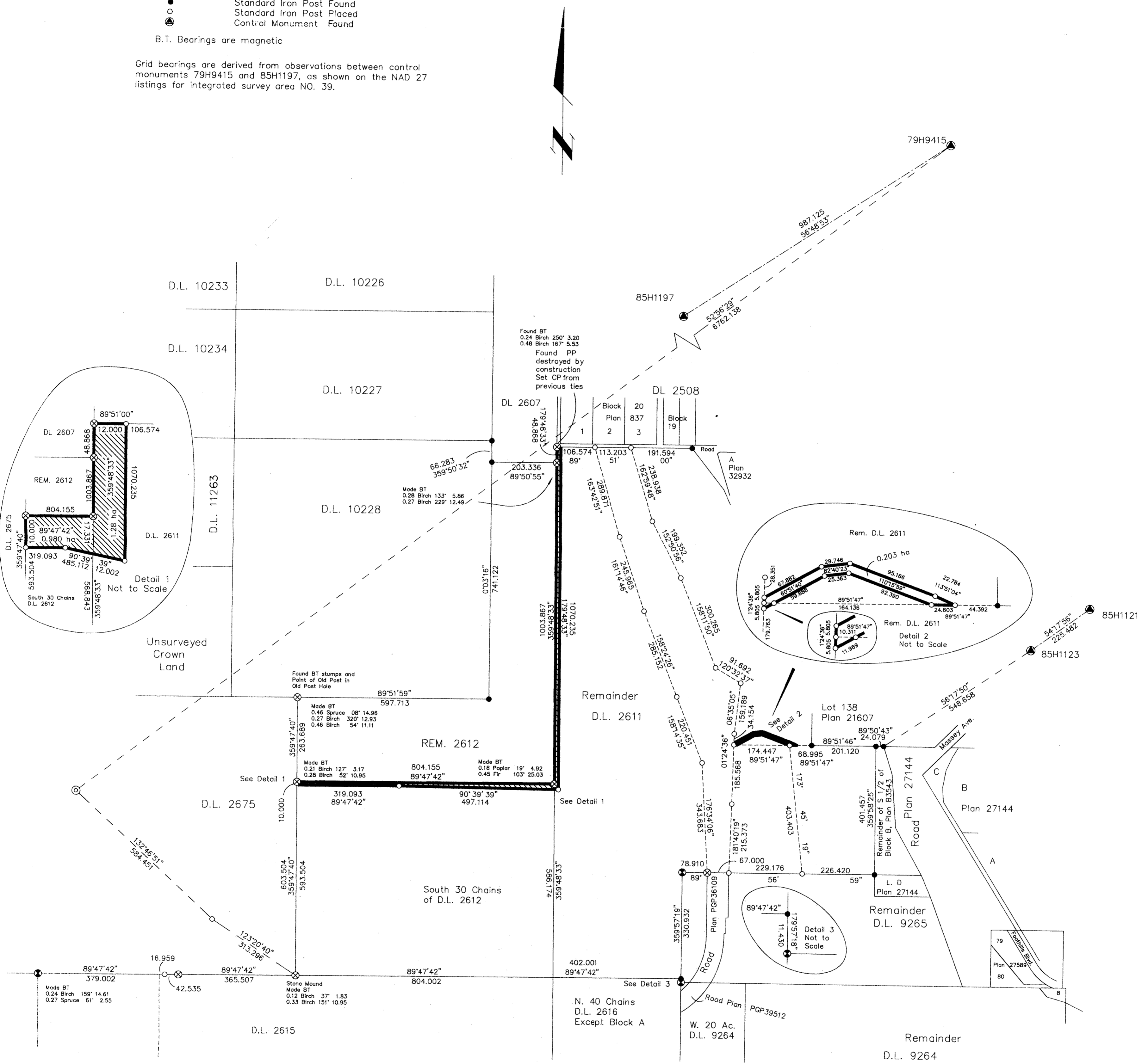
Pursuant to Section 113 of the Land Title Act.

Scale: 1 : 7500 (Distances are in metres)

- LEGEND
Standard Concrete Post Placed
Standard Capped Post Found
Standard Capped Post Placed
Standard Iron Post Found
Standard Iron Post Placed
Control Monument Found

B.T. Bearings are magnetic

Grid bearings are derived from observations between control monuments 79H9415 and 85H1197, as shown on the NAD 27 listings for integrated survey area NO. 39.



BOOK OF REFERENCE table with columns: DESCRIPTION, AREA. Rows: S. 30 Chains D.L. 2612 (0.980 ha), Part D.L. 2611 (1.28 ha), Part D.L. 2611 (0.203 ha).

I, Gordon Kilbride, a British Columbia Land Surveyor of Prince George in British Columbia, certify that I was present at and personally superintended the survey represented by this plan and that the survey and plan are correct. The survey was completed on the 4th day of March, 1994.

Gordon Kilbride signature and name: Gordon Kilbride, B.C.L.S.

I hereby certify that this is the Official Plan of the right of way shown outlined hereon. Original signed by D.L. MORTON. For Surveyor General Victoria, B.C. January 16, 1994

This plan lies within the Fraser-Fort George Regional District. KILBRIDE SURVEYS British Columbia Land Surveyors Prince George, B.C. Ph: (604) 562-1196 Fax: 562-3656