

REFERENCE PLAN OF CONSOLIDATION
 OF LOTS 1 TO 5, BLOCK 18, LOTS 8 TO 15,
 BLOCK 17, PLAN 1268 AND PARCEL A, PLAN 21302,
 DISTRICT LOT 343, CARIBOO DISTRICT.

PLAN NO. PGP 39641

Deposited in the Land Title Office at Prince
 George this 3 day of Jan 1996

B.B.

REGISTRAR

B.C.G.S. 93G.097

Scale: 1 : 500 (Distances are in metres)

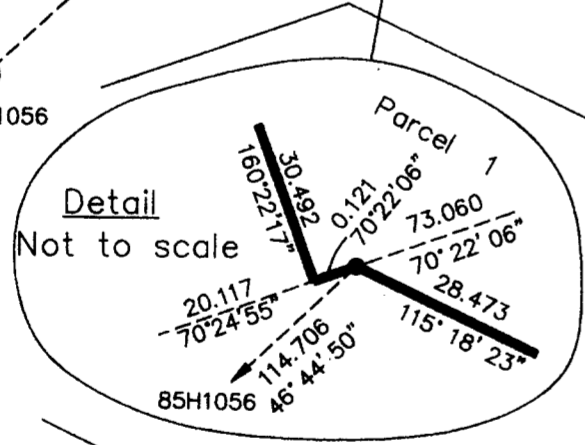
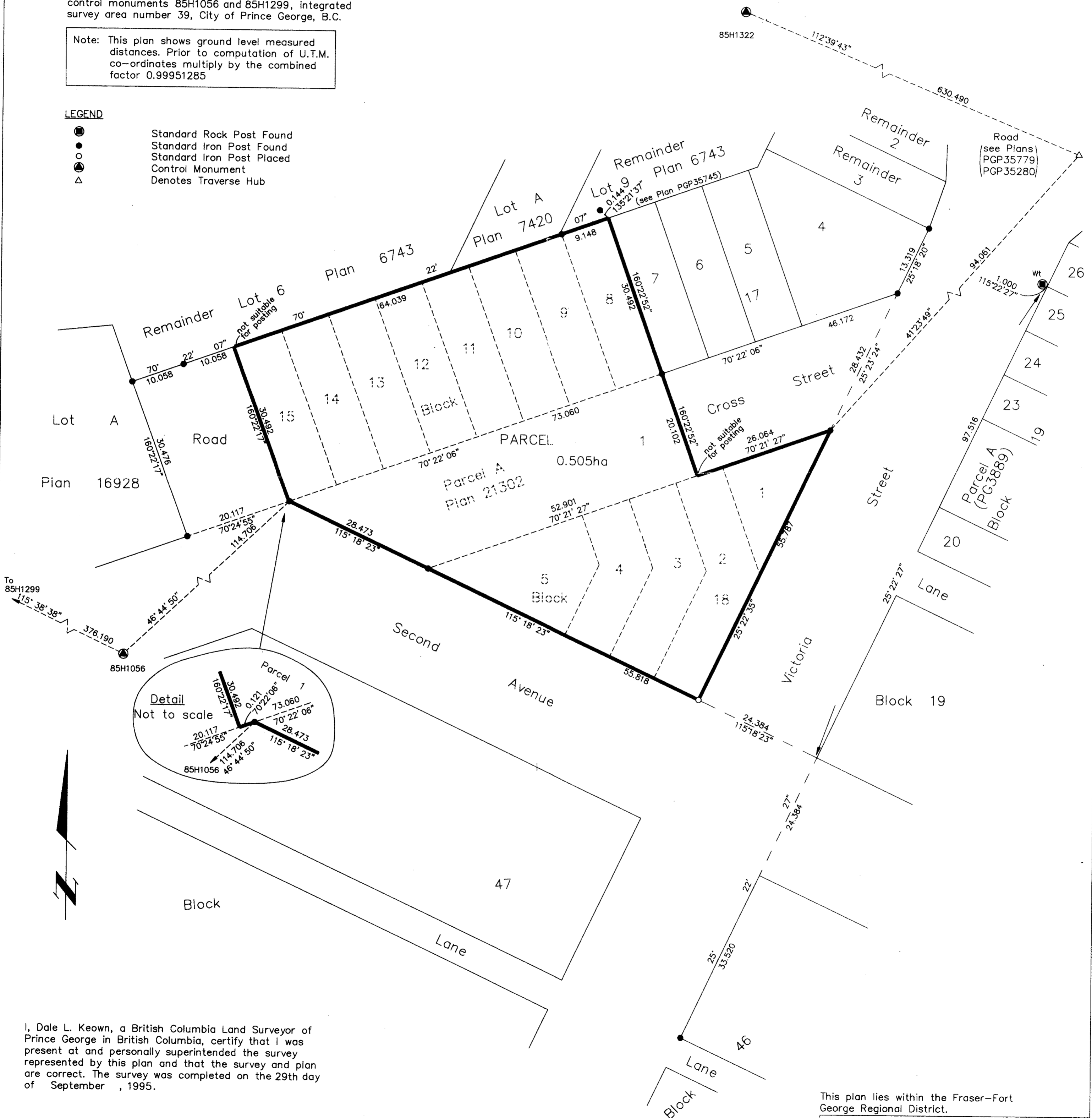


Grid bearings are derived from observations between
 control monuments 85H1056 and 85H1299, integrated
 survey area number 39, City of Prince George, B.C.

Note: This plan shows ground level measured
 distances. Prior to computation of U.T.M.
 co-ordinates multiply by the combined
 factor 0.99951285

LEGEND

- Standard Rock Post Found
- Standard Iron Post Found
- Standard Iron Post Placed
- △ Control Monument
- △ Denotes Traverse Hub



I, Dale L. Keown, a British Columbia Land Surveyor of
 Prince George in British Columbia, certify that I was
 present at and personally superintended the survey
 represented by this plan and that the survey and plan
 are correct. The survey was completed on the 29th day
 of September, 1995.

Dale Keown
 Dale L. Keown, B.C.L.S.

This plan lies within the Fraser-Fort
 George Regional District.

KILBRIDE LAND SURVEYING LTD.
 British Columbia Land Surveyors
 Prince George, B.C.
 Ph: (604) 562-1196 Fax: 562-3656

F.B.- RA	Blk 18 D.L.- 343	REF. NO.- 940696
----------	---------------------	------------------