

REGISTRAR BB

PLAN OF SUBDIVISION OF LOT 15, 16 AND 17, PLAN 29700 AND CLOSED ROAD, PLAN PGP39049, DISTRICT LOT 745, CARIBOO DISTRICT.

B.C.G.S. 93C.087

Scale: 1 : 1000 (Distances are in metres)

Grid bearings are derived from observations between control monuments 86H1723 and 86H1731, integrated survey area number 39, City of Prince George, B.C.

Note: This plan shows ground level measured distances. Prior to computation of U.T.M. co-ordinates multiply by the combined factor 0.9995105393

LEGEND

- Standard Iron Post Found Control Monument

RE-APPROVED UNDER THE LAND TITLE ACT THIS 21 DAY OF SEPTEMBER 1995

I, Gordon Kilbride, a British Columbia Land Surveyor of Prince George in British Columbia, certify that I was present at and personally superintended the survey represented by this plan and that the survey and plan are correct. The survey was completed on the 9 day of December, 1992.

Gordon Kilbride, B.C.L.S.

Approved under the Land Title Act this 17 day of February 1995

Owner: Her Majesty the Queen, Province of British Columbia, by the Minister of Transportation and Highways.

Authorized Signatory R. MILES WEBSTER

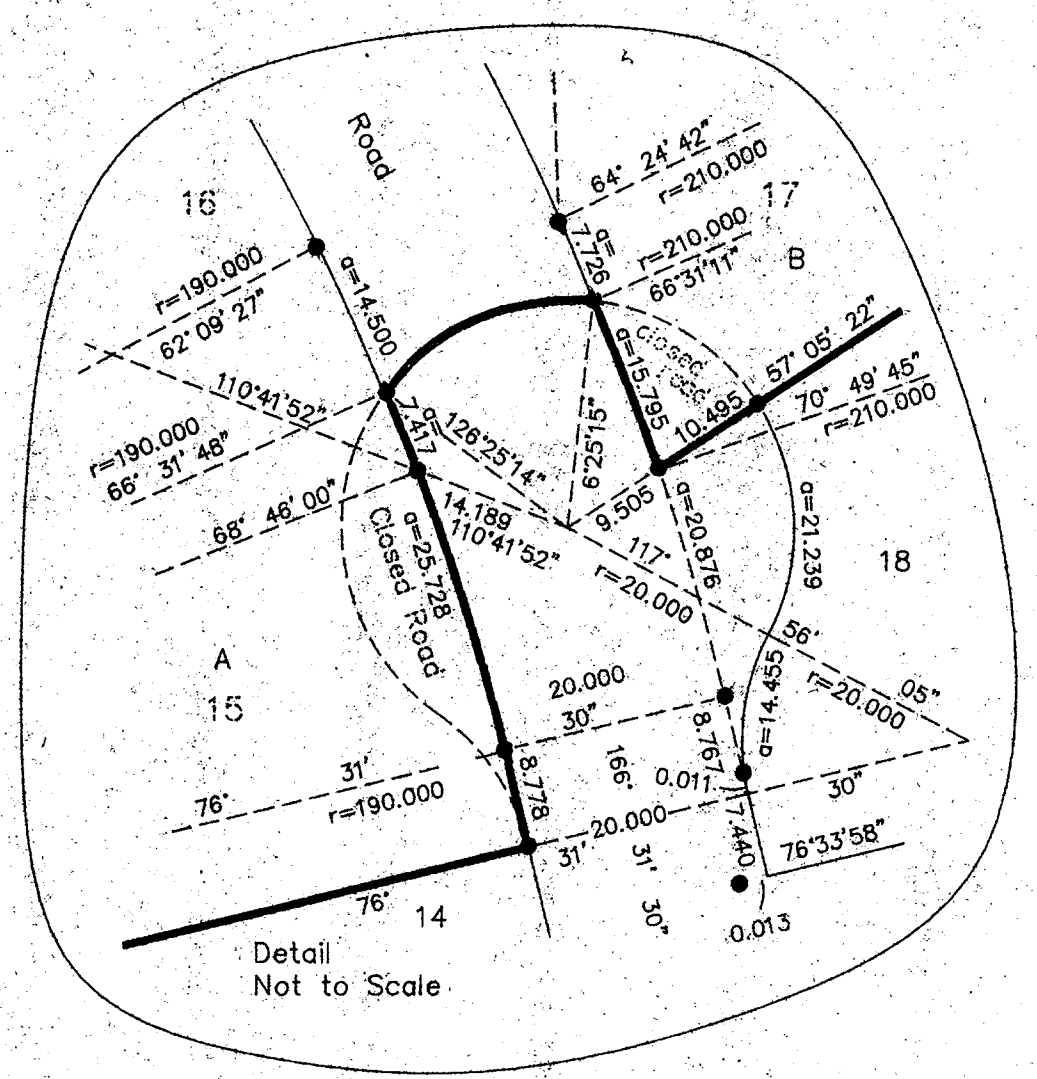
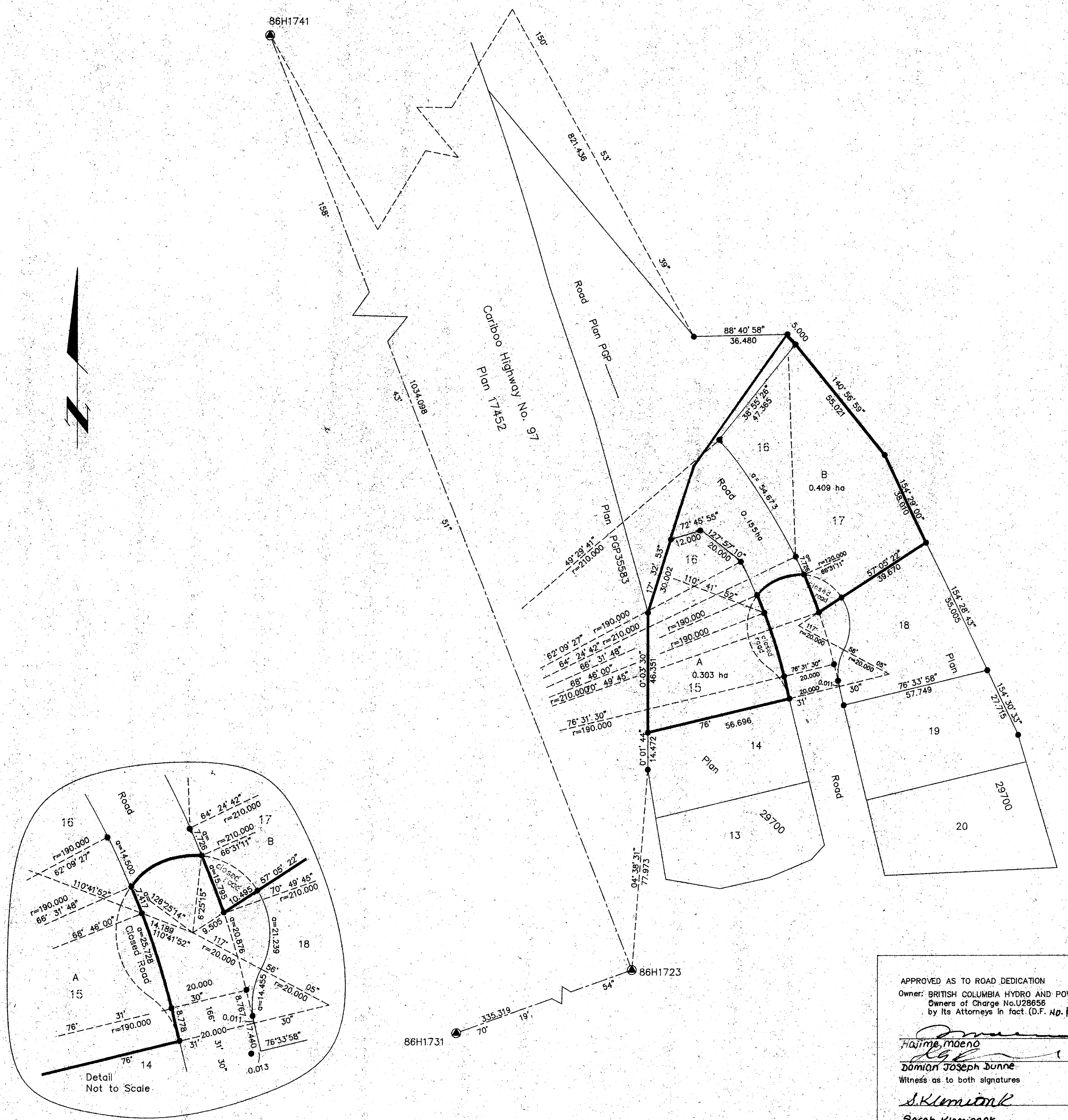
Approved under the Land Title Act this 31 day of February 1995

Authorized Signatory

Approving Officer City of Prince George.

Witness to both signatures KENNETH J. SCOTFIELD, 1211 4th AVE, PRINCE GEORGE, BC V2L 2A9

RE-APPROVED UNDER LAND TITLE ACT THIS 07 DAY OF SEPT 1995



APPROVED AS TO ROAD DEDICATION. Owner: BRITISH COLUMBIA HYDRO AND POWER AUTHORITY. Witness as to both signatures: Sarah Klemionek, 333 Dunsmuir Street, Vancouver, BC V6B 5R3

KILBRIDE SURVEYS, British Columbia Land Surveyors, Prince George, B.C. Ph: (604) 562-1196 Fax: 562-3656