

29

PLAN NO. PGP 39050

Deposited in the Land Title Office at Prince George this 29 day of June 1995

BB

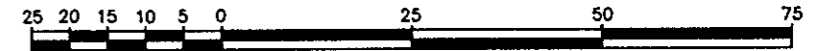
REGISTRAR

# REFERENCE PLAN TO ACCOMPANY CITY OF PRINCE GEORGE BYLAW NO. 5823 CLOSING ROAD ADJACENT TO LOT 18, PLAN 29700, DISTRICT LOT 745, CARIBOO DISTRICT.

B.C.G.S. 93G.087

Pursuant to Section 120 of the Land Title Act.

Scale: 1 : 1000 (Distances are in metres)



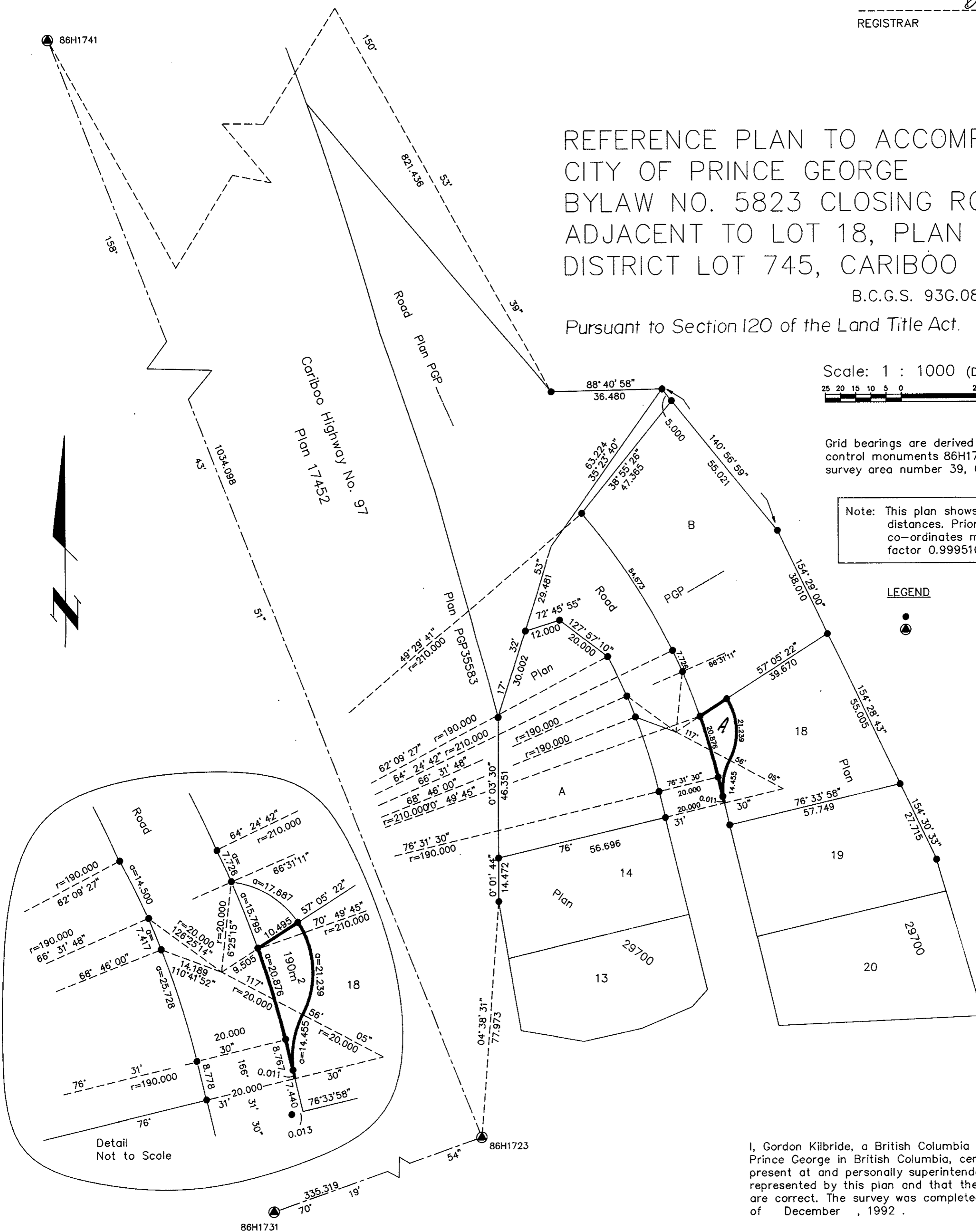
Grid bearings are derived from observations between control monuments 86H1723 and 86H1731, integrated survey area number 39, City of Prince George, B.C.

Note: This plan shows ground level measured distances. Prior to computation of U.T.M. co-ordinates multiply by the combined factor 0.9995105393

### LEGEND



Standard Iron Post Found Control Monument



Detail Not to Scale

I, Gordon Kilbride, a British Columbia Land Surveyor of Prince George in British Columbia, certify that I was present at and personally superintended the survey represented by this plan and that the survey and plan are correct. The survey was completed on the 9 day of December, 1992.

*Gordon Kilbride*  
Gordon Kilbride, B.C.L.S.

Approved under the Land Title Act this 27 day of February 19 95  
*[Signature]*  
Approving Officer  
Ministry of Transportation & Highways

Approved under the Land Title Act this 31 day of February 19 95  
*[Signature]*  
Approving Officer  
City of Prince George.

This plan lies within the Fraser Fort George Regional District.

KILBRIDE SURVEYS British Columbia Land Surveyors Prince George, B.C. Ph: (604) 562-1196 Fax: 562-3656		
F.B.- TT 28	D.L.- 745	REF. NO.-921081C