

PLAN NO. PGP 38956

Deposited in the Land Title Office at Prince George this 23 day of May 1995

bb

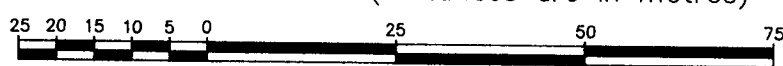
REGISTRAR

REFERENCE PLAN OF LOT B, PLAN PGP36418, DISTRICT LOT 753, CARIBOO DISTRICT.

Pursuant to Section 100(1)(a) of the Land Title Act.

B.C.G.S. 93G.097

Scale: 1 : 1000 (Distances are in metres)

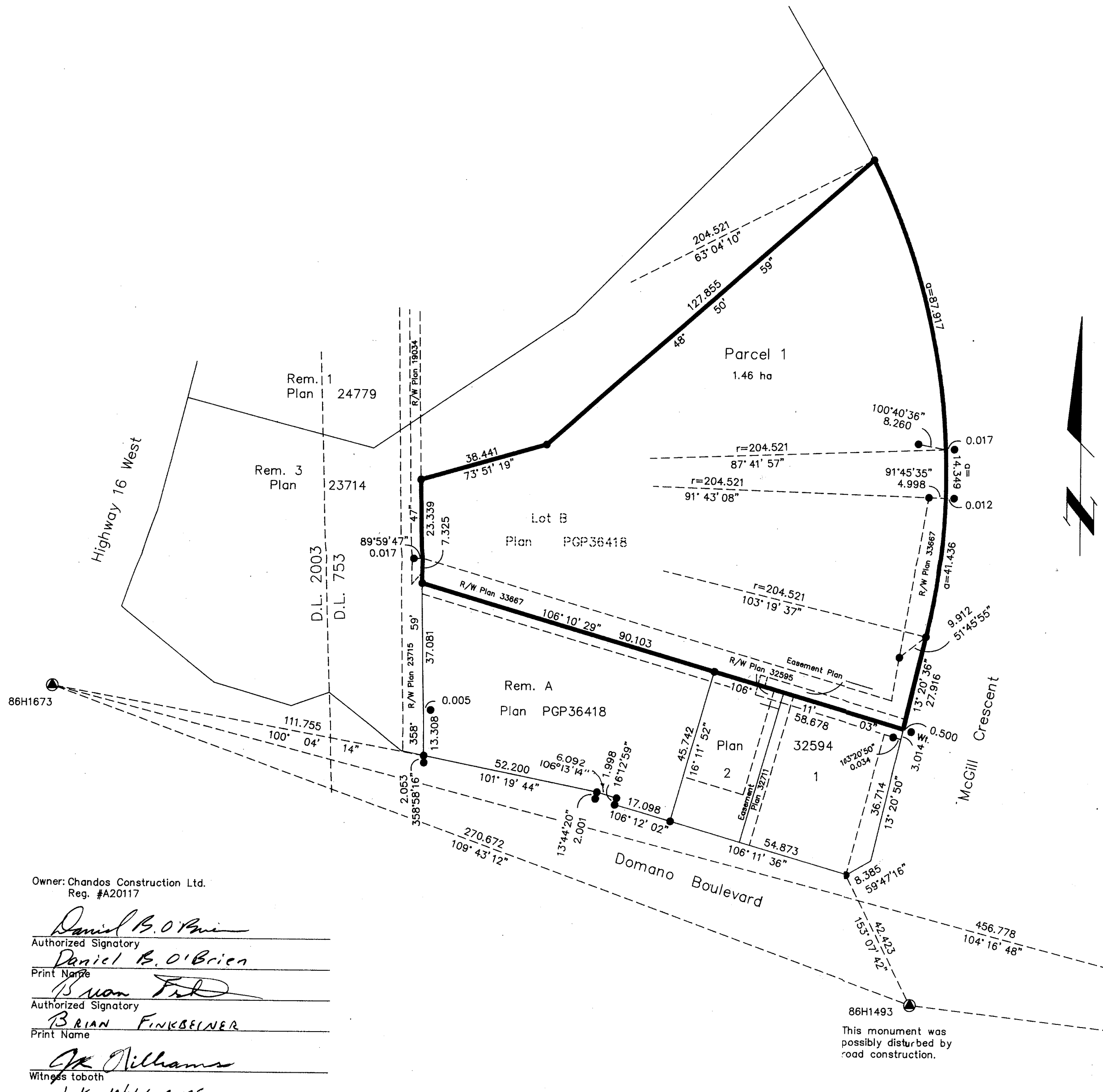


LEGEND

- Standard Iron Post Found
- ⊙ Control Monument

Grid bearings are derived from observations between control monuments 86H1673 and 86H1561, integrated survey area number 39, City of Prince George, B.C.

Note: This plan shows ground level measured distances. Prior to computation of U.T.M. co-ordinates multiply by the combined factor 0.99950100



I, Gordon Kilbride, a British Columbia Land Surveyor of Prince George in British Columbia, certify that I was present at and personally superintended the survey represented by this plan and that the survey and plan are correct. The survey was completed on the 23rd day of February, 1995.

Gordon Kilbride
Gordon Kilbride, B.C.L.S.

Owner: Chandos Construction Ltd.
Reg. #A20117

Daniel B. O'Brien
Authorized Signatory

Daniel B. O'Brien
Print Name

Brian Finkbeiner
Authorized Signatory

BRIAN FINKBEINER
Print Name

J.K. Williams
Witness to both

J.K. WILLIAMS
Print Name

76 MANOR DRIVE
Address

SHERWOOD PARK, AB T8A2J1
Postal Code

PROFESSIONAL ENGINEER
Occupation

86H1493
This monument was possibly disturbed by road construction.

This plan lies within the Fraser-Fort George Regional District.

KILBRIDE LAND SURVEYING LTD. British Columbia Land Surveyors Prince George, B.C. Ph: (604) 562-1196 Fax: 562-3656		
F.B.- UZ 14	D.L.- 753	REF. NO.-940611